



Rubber Clone Recommendation in Cambodia for 2007-2009



C. Chan, P. Chetha, H. Bunthun, R. Lacote and A. Clement-Demange

CRRI in collaboration with Cirad Cp

Siem Riep 10 November 2006

Objective of Agro-economy

- ☐ Clonal diversification
- ☐ Labor productivity
- ☐ Reduction of risk
- ☐ Reduction of immature period
- ☐ Security and productivity of the plantation
- ☐ Valorization of rubber wood

Ecological Conditions

- ☐ One main dry season and one rainy season alternate with a short dry season.
- ☐ Little problem on leaves diseases
- ☐ Little problem on wind damage
- ☐ No Root disease, no Corynespora disease
- ☐ Pink disease is of importance
- ☐ Problem with Imperata, fire , Animals

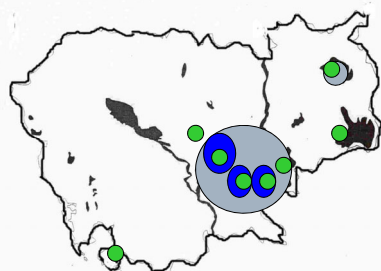
3

Network of Large Scale Clone Trials (LSCT)

- ☐ Chup(5) : (1)1986, (4)1996
- ☐ Krek(5) : (4)1995, (1)1996
- ☐ CRRI(7) : (2)1996,(2)1997,(1)1999, (1)2005, (1) 2006
- ☐ Peam Cheang: (2) 2000
- ☐ Simple SSCT(20)/APIP Project in 7 locations
- ☞ Total:19 LSCT and 20 SSSCT testing on 40 clones were introduced 1986-2005

4

Experimental Design



- Pilot Projet (AFD)
- Tests APIP (SSCT)
- Traditional Zone (LSCT)

I		II	
E	C	A	GT1
B	GT1	E	B
D	A	D	C
C	B	C	A
GT1	E	GT1	D
A	D	E	B

III	IV
RCBD	
1 Trial : 6 - 8 Treatments	
1 Trial : 4 Replications	
1 Replication : 80 - 100 trees	
Control Clone : GT1	

A	B	C	D
GT1	RRIM600	IRCA18	PB260

1 Trial : 1-1.2 ha (SSSCT) /APIP Project

5

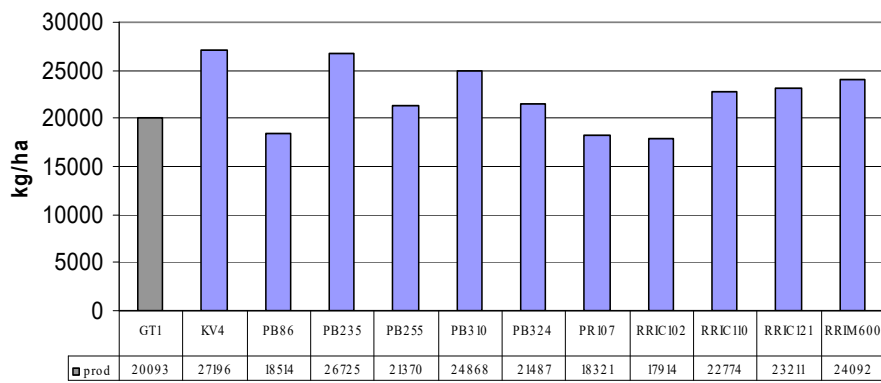
Clones growth observed in Cambodia

grade	Clone
5	PB330, PB235, PB280
4	RRIC110, IRCA130, IRCA230, IRCA111, PB255
3	PB260, KV4, AF261, PB217, PB254, GT1, RRIM600, PR107, PR255
2	PB254, PB310, IRCA18, IRCA41, IRCA109, RRIC101
1	RRIM712, BPM24, AVROS308, PB86, KHA9, TJ1

6

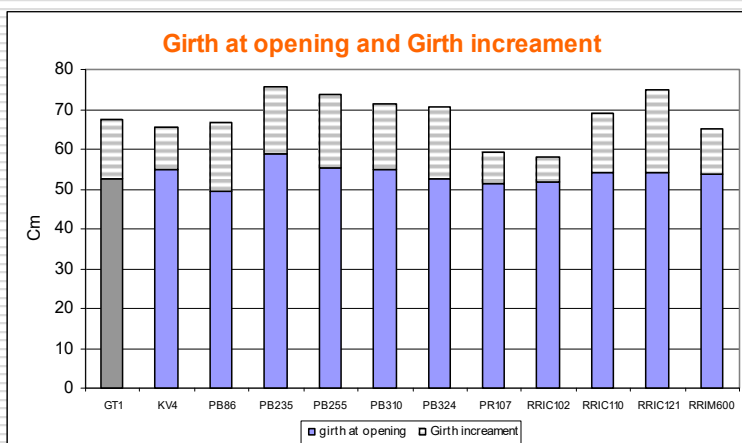
CHUP's LSCT planted in 1986

Cumulated Production in 12 yrs (kg/ha)

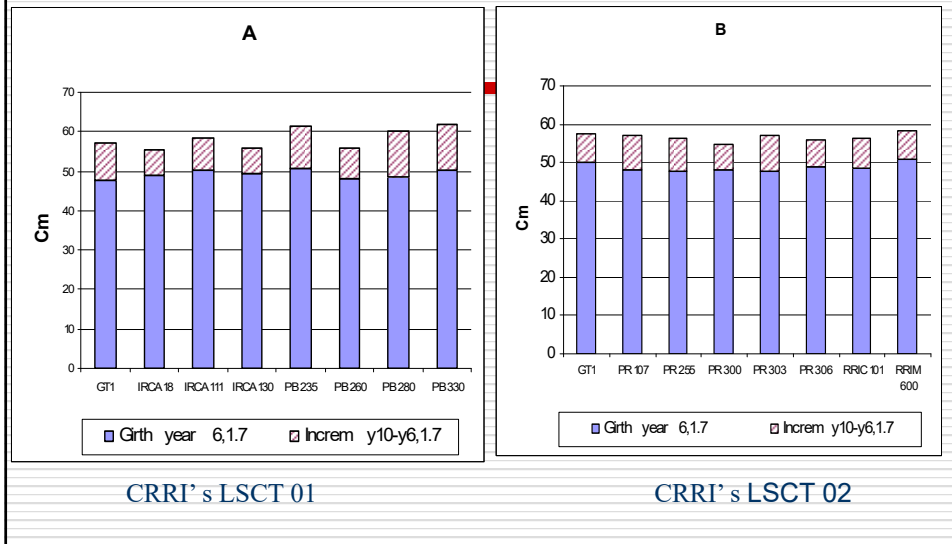


CHUP's LSCT planted in 1986

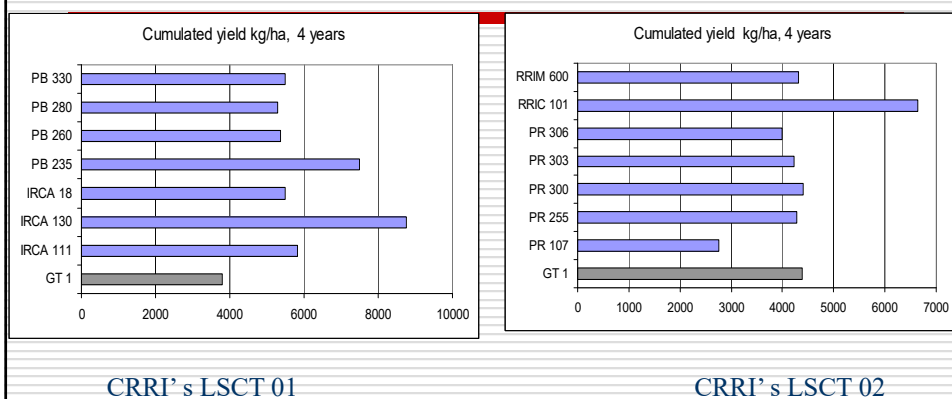
Girth at opening and Girth increament



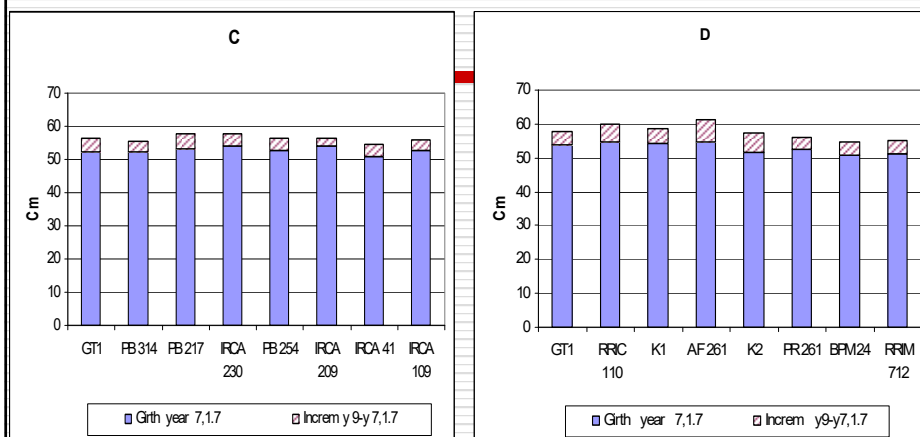
**Growth during immature and mature period
of CRRl's LSCT No 1 & No 2 planted in 1996**



**Cumulated Yield of CRRl's LSCT
No 1 & No 2 planted in 1996 (Kg/ha)**



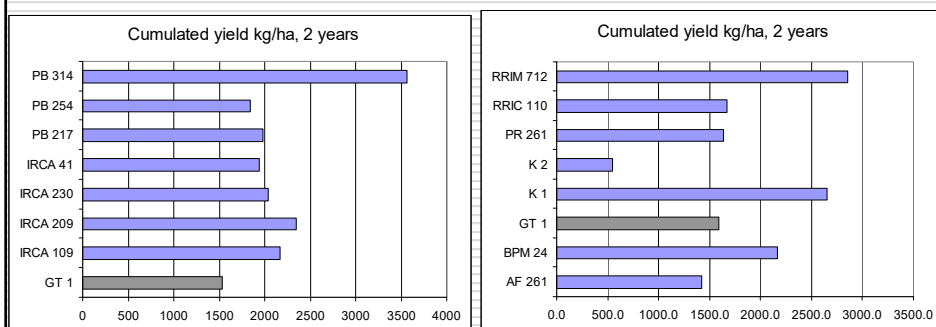
Growth during immature and mature period of CRRI' s LSCT No 3 & No 4 planted in 1997



CRRI' s LSCT No. 03

CRRI' s LSCT No. 04

Cumulated Yield of CRRI' s LSCT No 3 & No 4 planted in 1997 (Kg/ha)

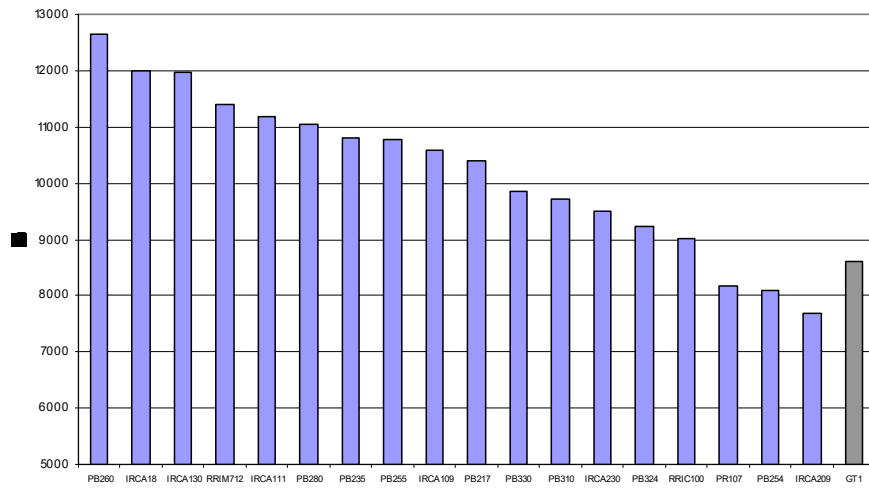


CRRI' s LSCT 03

CRRI' s LSCT 04

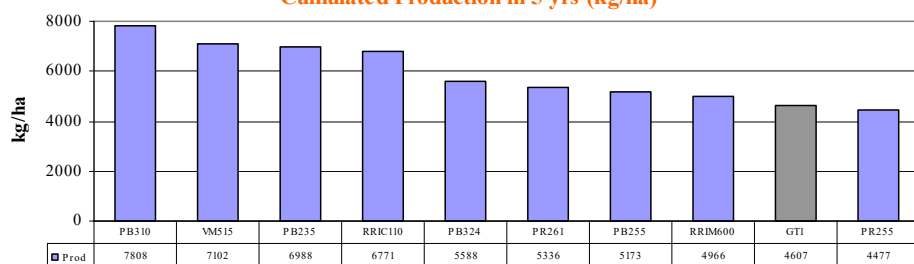
IVORY COAST: LSCT's consolidate data 2003

Production Cumulated in 6 Yrs (kg/ha)



VIET NAM: LSCT at CT.KT planted in 1985

Cumulated Production in 5 yrs (kg/ha)



Strategy 1

Maximize Security of Rubber
Smallholder

Clone: GT1

15

Strategy 2

Increase rubber production
of the smallholder

Clones: PB260
RRIM 600
IRCA230

16

Strategy 3

Reduction immature period and wood
production for industrial rubber
plantation and rubber smallholder

Clones: PB330
PB235
IRCA130
IRCA 230

17

Strategy 4

Very Long term productivity

Clone: PR107
RRIM 600

18

Strategy 5

Labor productivity and land productivity

Clones: PB217

IRCA230

PB255

KV 4

19

Conclusion

☐ Increasing of LSCT and SSCT

☐ Monoclonal block

❖ Rubber Smallholder

Introduce and Develop RRIM600, PB260 and IRCA230

❖ Industrial Plantations

Priority to Develop PB217, IRCA230 and RRIM600

Diversification: PB255, PB260, PB330, RRIM712

20

Rubber Clone Recommendation in Cambodia 2007-2009
proposed as follows:

Class I	Class II	Class III
GT 1	PB255	IRCA 41
RRIM 600	PB 260	IRCA 109
PB 217	PB 235	IRCA 111
IRCA 230	PB 314	IRCA 209
	PB 330	PB 280
	IRCA 18	PB 310
	IRCA 130	PB 324
	RRIM 712	RRIC 100
	PR 107	RRIC 110
	KV4	RRIC 121

21

