

Sweet sorghum

methodological exploration of a
multifunctionality to innovate in
Haitian agriculture

Annaïg Levesque (Supagro)

Ludovic Temple (Cirad)

Serge Braconnier (Cirad)

Bénédique Paul (UniQ)

Introduction

Institutional conditions

A project supported by ANR between 2010 and
University – a private foundation – companies from

A project first of all concentrated on the introduction
experimental conditions in different situations of

A part of socioeconomic analysis on the conditions

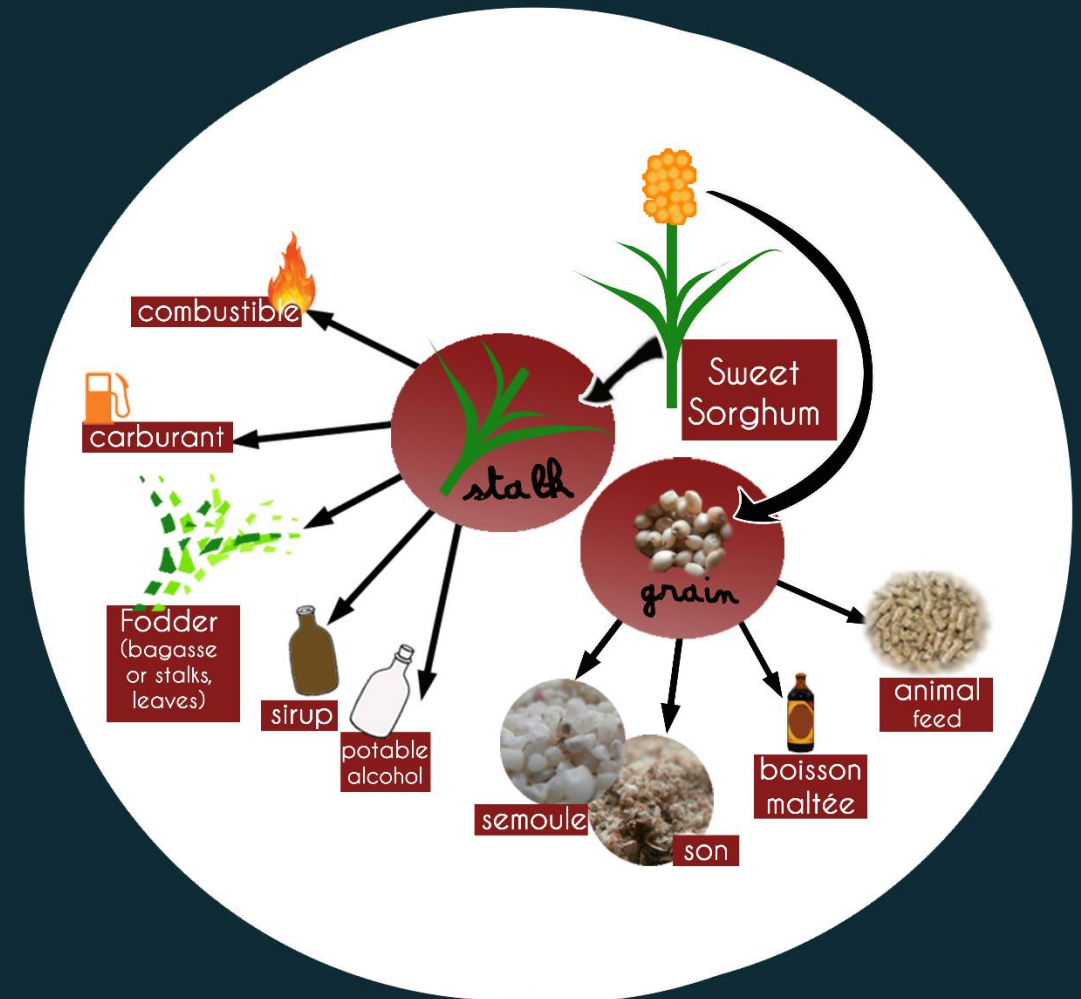
Landscape around the implementation

Sorghum : different uses in the world

New industrial interest related to a better resistance

The potentiality of the multifunctionality of sweet

A literature which assumes that the multifunctionality
developing countries.



Definition of the hypothesis in terms of complementary research questions

1

What are the conditions for the SS development in Haiti the in alcohol sector ?

2

How the animal feed sector is a important component to process by-products of the first use or/and to develop new types of demands about sorghum ?

3

How the development of these previous uses would impact on the household living conditions and also on the macroeconomic situation ?

Methodological and conceptual frameworks

■ Sectorial innovation system (Malerba) as frame of process stem from interactions between stakeholders to a same business sector.

■ Surveys since 2011:

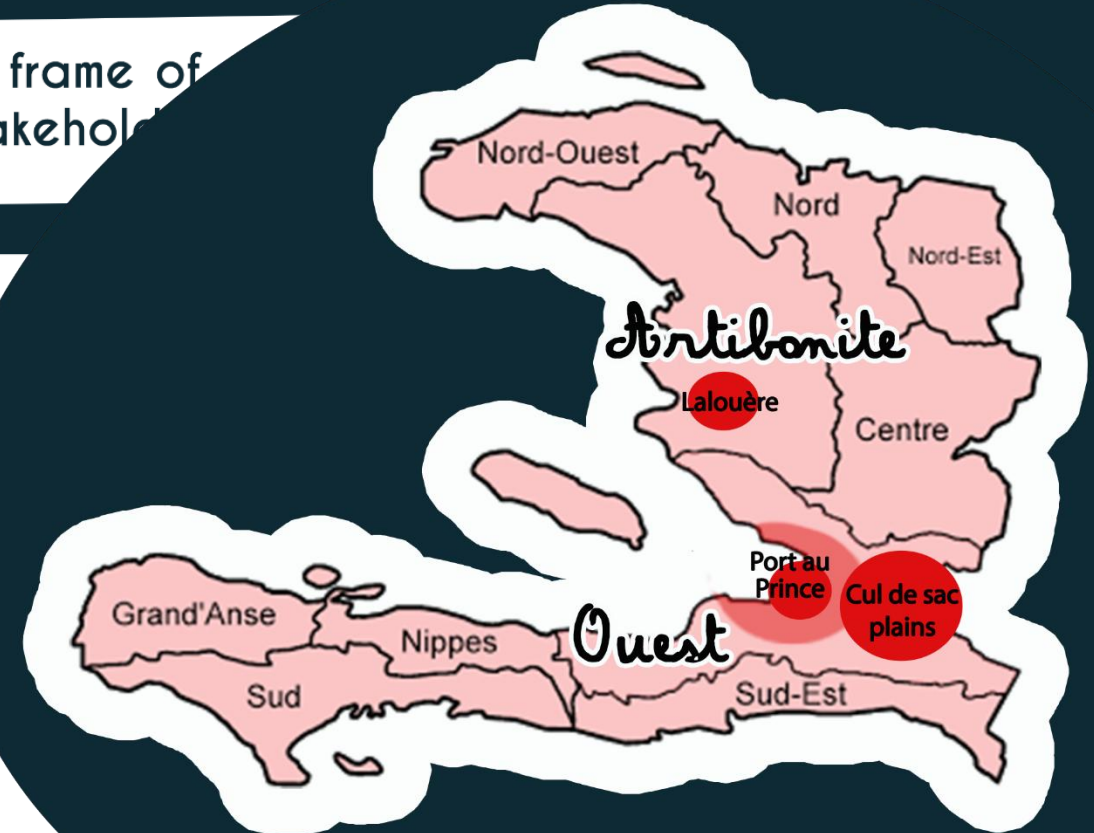
- 2012 first surveys to explore the potential uses of sweet sorghum
- 2013 complementary surveys (n : 91) about sweet sorghum
- 2014 institutional surveys and interviews with stakeholders

■ Survey scheme for the third phase:

Surveys from resource persons from institutions and research and innovation.

Semi-structured interviews with stakeholders of different

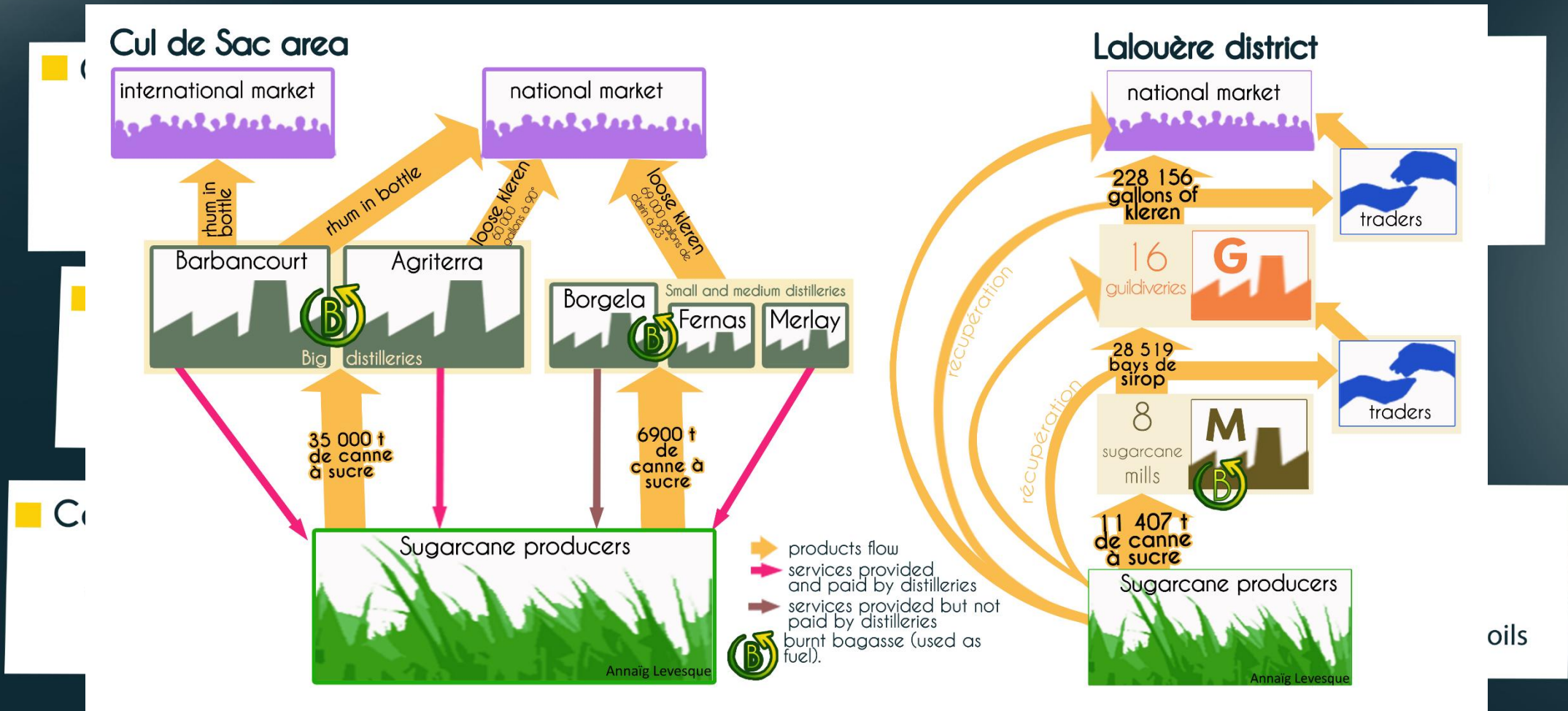
- ● Cul de Sac plains
- ● Lalouère district
- ● Poultry industry around Port au Prince



■ End of project stakeholders' workshop : validation of intermediate results with stakeholders

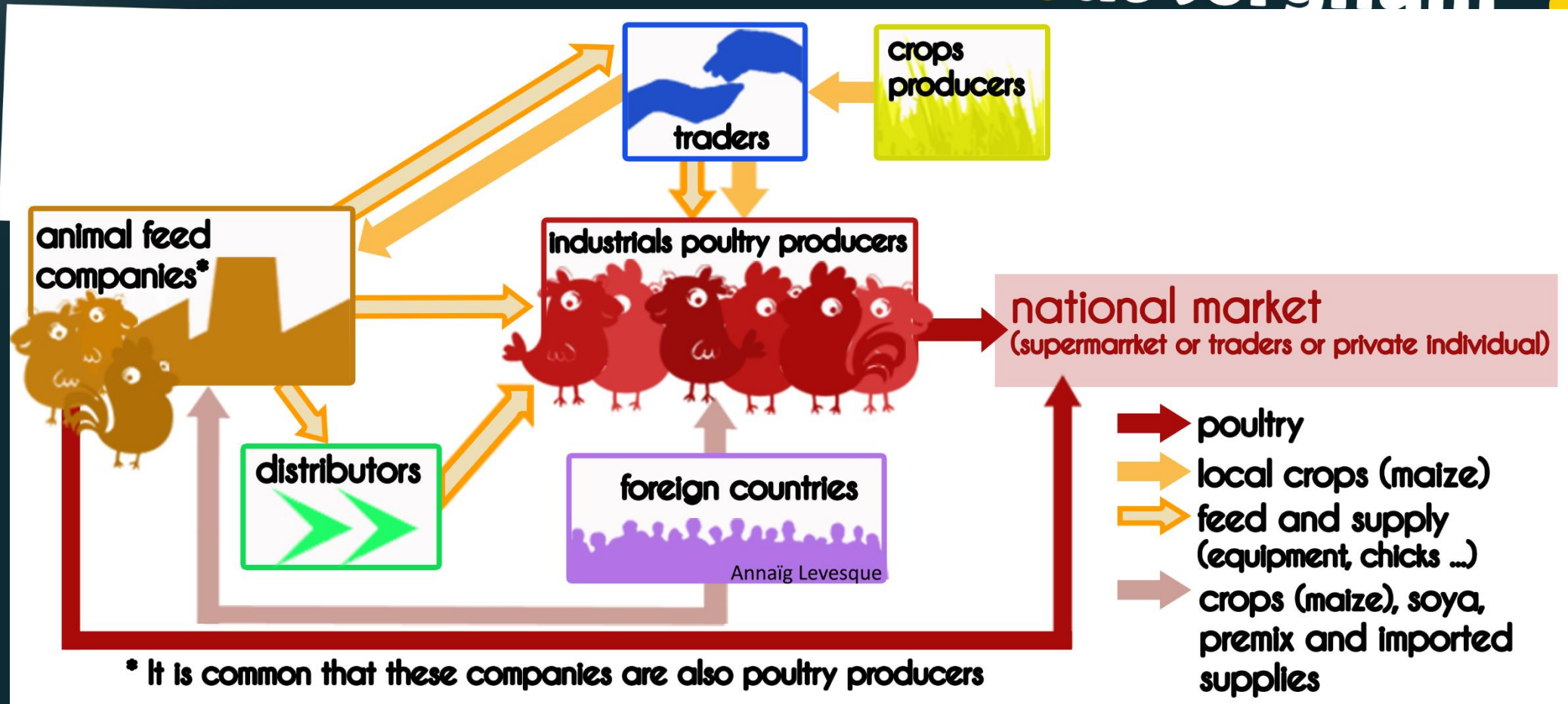
Result n°1

What are the conditions of **SS** development in Haiti in the alcohol industry (klerin)?



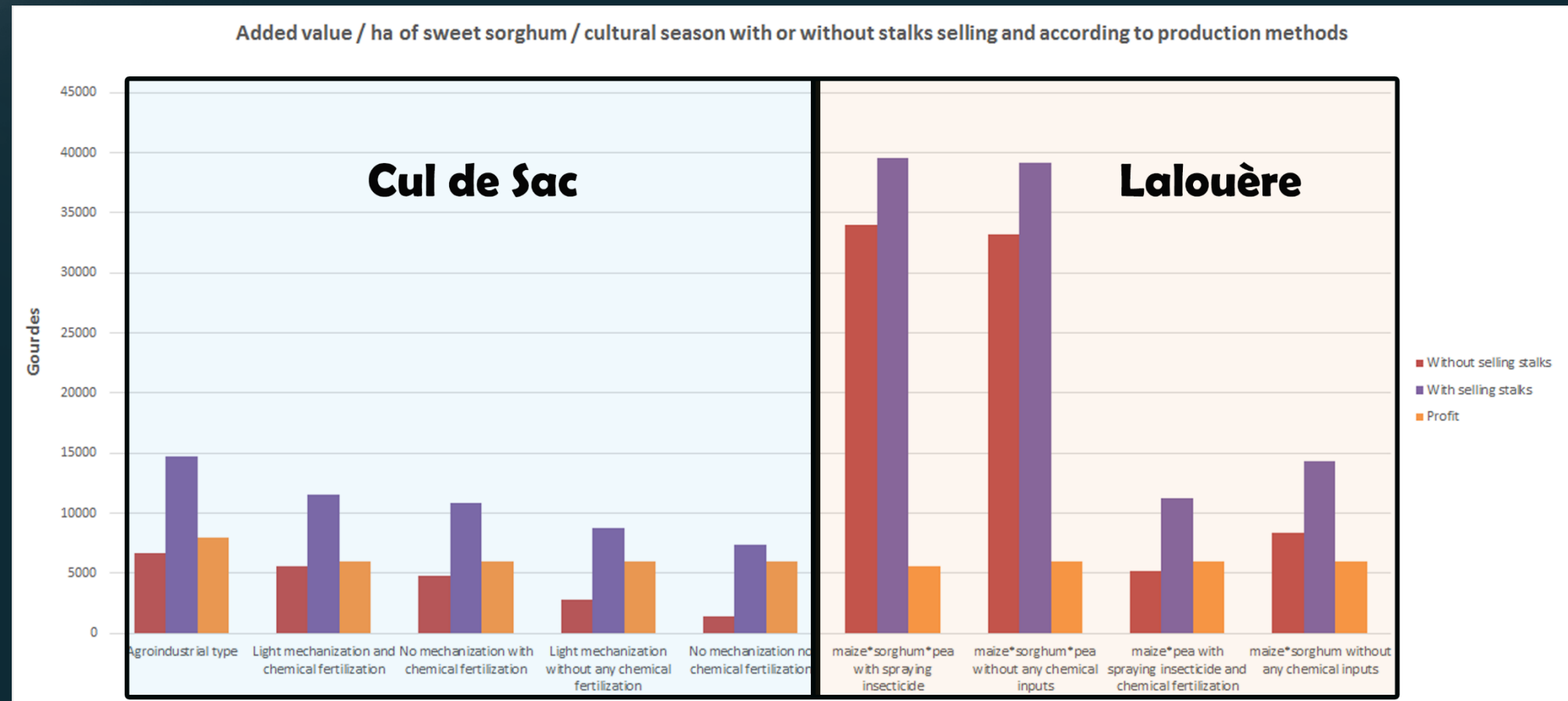
Result n°2

How the animal feed sector is an **important** component to **process by-products** of the first use or/and to **develop new types of demands about sorghum**?



Result n°3

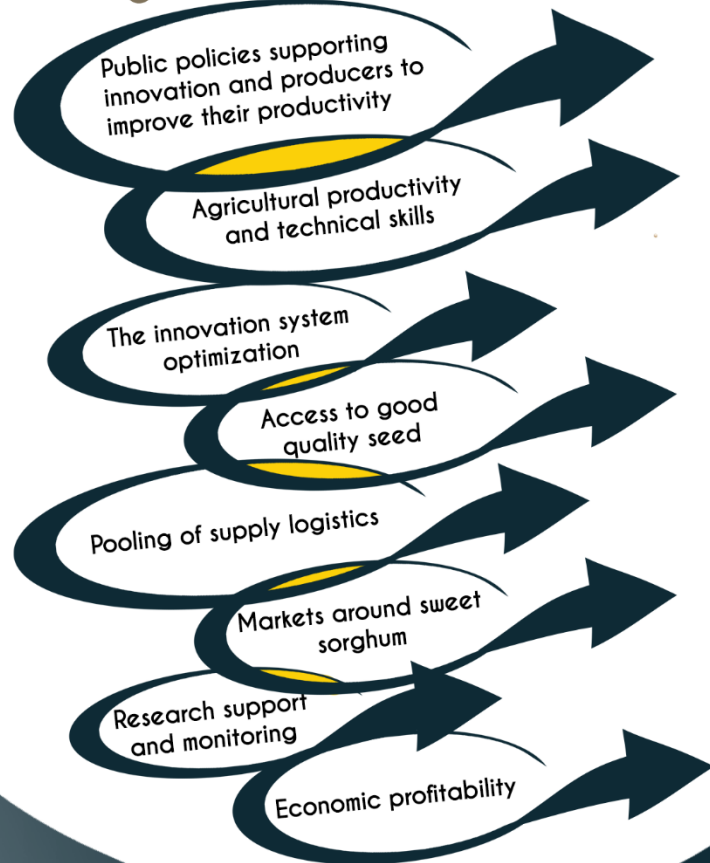
How the development of these previous uses would impact on household living conditions and also on the macroeconomic situation?



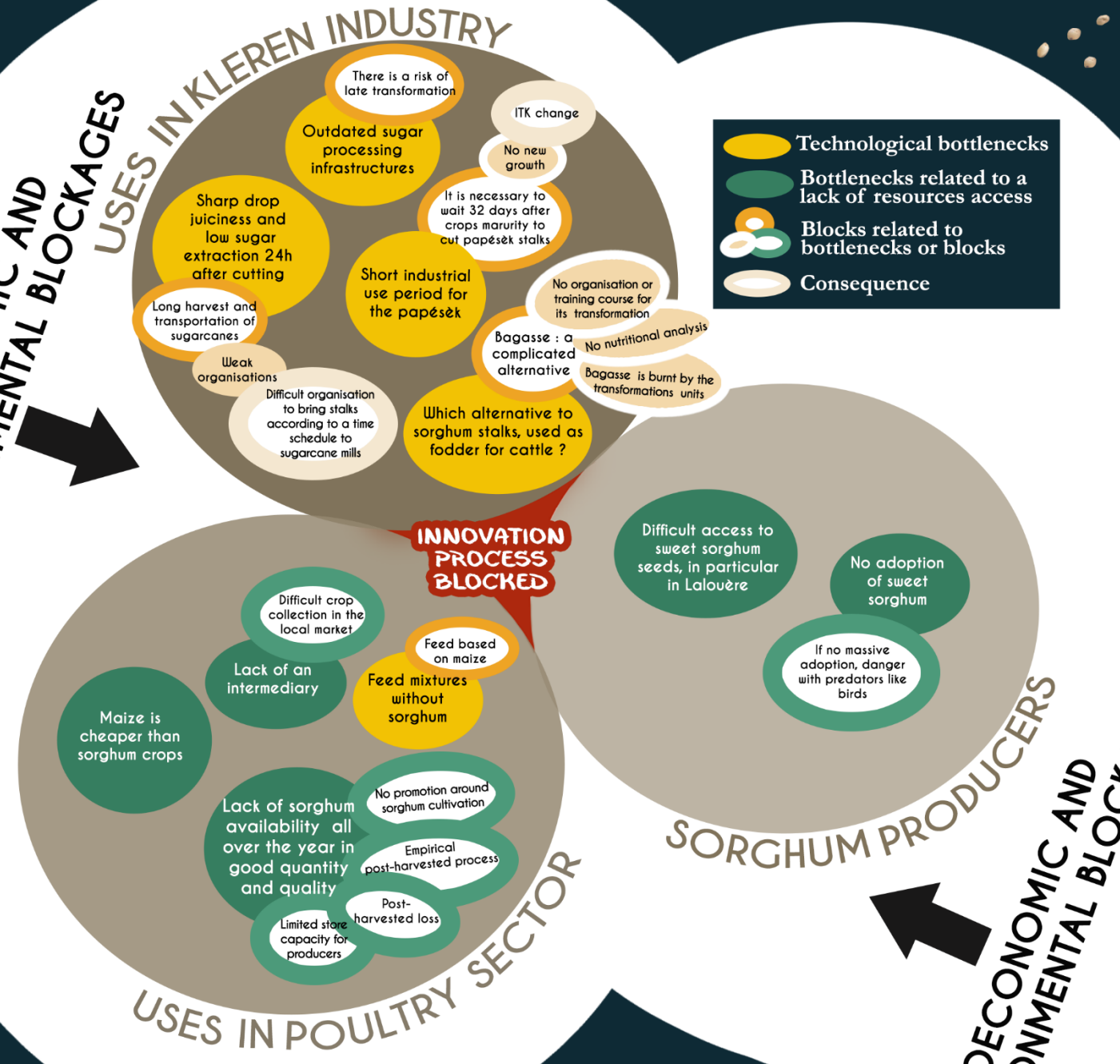
months)
and
onal job
family
verage
ins to
le Sac

Systemic aspect of the bottlenecks

CONDITIONS of IMPLEMENTATION of SS INNOVATION



SOCIOECONOMIC AND ENVIRONMENTAL BLOCKAGES



Conclusion

- Identification of various bottlenecks of sweet sorghum implementation in local alcohol and poultry feed sectors
- A complementarity between the alcohol sector and the animal feed sector which has not been verified
- The conditions to implement these innovation are systemic : they demonstrate the necessity to integrate organisational, institutional and technical aspects in the methods of *ex ante* impact studies.

Thanks
for your attention