



ORIGINAL RESEARCH

Open Access



# Assessing changes in global fire regimes

Sayedeh Sara Sayedi<sup>1\*</sup> , Benjamin W. Abbott<sup>1</sup>, Boris Vannière<sup>2,3,4</sup>, Bérangère Leys<sup>5</sup>, Daniele Colombaroli<sup>6</sup>, Graciela Gil Romera<sup>7</sup>, Michał Słowiński<sup>8</sup>, Julie C. Aleman<sup>9</sup>, Olivier Blarquez<sup>10</sup>, Angelica Feurdean<sup>11,12</sup>, Kendrick Brown<sup>13,14</sup>, Tuomas Aakala<sup>15</sup>, Teija Alenius<sup>16</sup>, Kathryn Allen<sup>17,18,19</sup>, Maja Andric<sup>20</sup>, Yves Bergeron<sup>21,22</sup>, Siria Biagioni<sup>23</sup>, Richard Bradshaw<sup>24</sup>, Laurent Bremond<sup>25</sup>, Elodie Brisset<sup>5</sup>, Joseph Brooks<sup>26</sup>, Sandra O. Brugger<sup>27,28</sup>, Thomas Brussel<sup>29</sup>, Haidee Cadd<sup>30</sup>, Eleonora Cagliero<sup>31,32</sup>, Christopher Carcaillet<sup>33,34,35</sup>, Vachel Carter<sup>36</sup>, Filipe X. Catry<sup>37</sup>, Antoine Champreux<sup>38</sup>, Emeline Chaste<sup>39</sup>, Raphaël Daniel Chavardès<sup>21,40,41</sup>, Melissa Chipman<sup>42</sup>, Marco Conedera<sup>43</sup>, Simon Connor<sup>44</sup>, Mark Constantine<sup>45</sup>, Colin Courtney Mustaphi<sup>46,47,48</sup>, Abraham N. Dabengwa<sup>49</sup>, William Daniels<sup>50</sup>, Erik De Boer<sup>51</sup>, Elisabeth Dietze<sup>52,53</sup>, Joan Estrany<sup>54,55</sup>, Paulo Fernandes<sup>56</sup>, Walter Finsinger<sup>32</sup>, Suzette G. A. Flantua<sup>57</sup>, Paul Fox-Hughes<sup>58</sup>, Dorian M. Gaboriau<sup>21</sup>, Eugenia M. Gayo<sup>59</sup>, Martin. P. Girardin<sup>40</sup>, Jeffrey Glenn<sup>60</sup>, Ramesh Glückler<sup>52</sup>, Catalina González-Arango<sup>61</sup>, Mariangelica Groves<sup>62</sup>, Douglas S. Hamilton<sup>63</sup>, Rebecca Jenner Hamilton<sup>64</sup>, Stijn Hantson<sup>65</sup>, K. Anggi Hapsari<sup>23</sup>, Mark Hardiman<sup>66</sup>, Donna Hawthorne<sup>67</sup>, Kira Hoffman<sup>68</sup>, Jun Inoue<sup>69</sup>, Allison T. Karp<sup>70</sup>, Patrik Krebs<sup>43</sup>, Charuta Kulkarni<sup>71</sup>, Niina Kuosmanen<sup>72</sup>, Terri Lacourse<sup>73</sup>, Marie-Pierre Ledru<sup>32</sup>, Marion Lestienne<sup>74</sup>, Colin Long<sup>75</sup>, José Antonio López-Sáez<sup>76</sup>, Nicholas Loughlin<sup>77</sup>, Mats Niklasson<sup>78</sup>, Javier Madrigal<sup>79</sup>, S. Yoshi Maezumi<sup>80</sup>, Katarzyna Marcisz<sup>81</sup>, Michela Mariani<sup>82</sup>, David McWethy<sup>83</sup>, Grant Meyer<sup>84</sup>, Chiara Molinari<sup>85</sup>, Encarni Montoya<sup>26,86</sup>, Scott Mooney<sup>87</sup>, Cesar Morales-Molino<sup>4,88</sup>, Jesse Morris<sup>89</sup>, Patrick Moss<sup>90</sup>, Imma Oliveras<sup>91</sup>, José Miguel Pereira<sup>92</sup>, Gianni Boris Pezzatti<sup>43</sup>, Nadine Pickarski<sup>93</sup>, Roberta Pini<sup>94</sup>, Emma Rehn<sup>95</sup>, Cécile C. Remy<sup>96</sup>, Jordi Revelles<sup>97,98</sup>, Damien Rius<sup>2</sup>, Vincent Robin<sup>99</sup>, Yanming Ruan<sup>100</sup>, Natalia Rudaya<sup>101,102</sup>, Jeremy Russell-Smith<sup>103</sup>, Heikki Seppä<sup>72</sup>, Lyudmila Shumilovskikh<sup>104</sup>, William T. Sommers<sup>105,106</sup>, Çağatay Tavşanoğlu<sup>107</sup>, Charles Umbanhowar<sup>108</sup>, Erickson Urquiaga<sup>109,110</sup>, Dunia Urrego<sup>111</sup>, Richard S. Vachula<sup>112</sup>, Tuomo Wallenius<sup>113</sup>, Chao You<sup>114,115</sup> and Anne-Laure Daniau<sup>116</sup>

## Abstract

**Background** The global human footprint has fundamentally altered wildfire regimes, creating serious consequences for human health, biodiversity, and climate. However, it remains difficult to project how long-term interactions among land use, management, and climate change will affect fire behavior, representing a key knowledge gap for sustainable management. We used expert assessment to combine opinions about past and future fire regimes from 99 wildfire researchers. We asked for quantitative and qualitative assessments of the frequency, type, and implications of fire regime change from the beginning of the Holocene through the year 2300.

**Results** Respondents indicated some direct human influence on wildfire since at least ~12,000 years BP, though natural climate variability remained the dominant driver of fire regime change until around 5,000 years BP, for most study regions. Responses suggested a ten-fold increase in the frequency of fire regime change during the last 250

\*Correspondence:

Sayedeh Sara Sayedi  
sarasayed91@gmail.com

Full list of author information is available at the end of the article



© The Author(s) 2024. **Open Access** This article is licensed under a Creative Commons Attribution 4.0 International License, which permits use, sharing, adaptation, distribution and reproduction in any medium or format, as long as you give appropriate credit to the original author(s) and the source, provide a link to the Creative Commons licence, and indicate if changes were made. The images or other third party material in this article are included in the article's Creative Commons licence, unless indicated otherwise in a credit line to the material. If material is not included in the article's Creative Commons licence and your intended use is not permitted by statutory regulation or exceeds the permitted use, you will need to obtain permission directly from the copyright holder. To view a copy of this licence, visit <http://creativecommons.org/licenses/by/4.0/>.

years compared with the rest of the Holocene, corresponding first with the intensification and extensification of land use and later with anthropogenic climate change. Looking to the future, fire regimes were predicted to intensify, with increases in frequency, severity, and size in all biomes except grassland ecosystems. Fire regimes showed different climate sensitivities across biomes, but the likelihood of fire regime change increased with higher warming scenarios for all biomes. Biodiversity, carbon storage, and other ecosystem services were predicted to decrease for most biomes under higher emission scenarios. We present recommendations for adaptation and mitigation under emerging fire regimes, while recognizing that management options are constrained under higher emission scenarios.

**Conclusion** The influence of humans on wildfire regimes has increased over the last two centuries. The perspective gained from past fires should be considered in land and fire management strategies, but novel fire behavior is likely given the unprecedented human disruption of plant communities, climate, and other factors. Future fire regimes are likely to degrade key ecosystem services, unless climate change is aggressively mitigated. Expert assessment complements empirical data and modeling, providing a broader perspective of fire science to inform decision making and future research priorities.

**Keywords** Biome, Climate change, Ecosystem services, Expert assessment, Fire regime, Holocene, Management

## Resumen

**Antecedentes** Las huellas humanas globales han alterado fundamentalmente los regímenes de fuegos, creando serias consecuencias para la salud humana, la biodiversidad y el clima. Sin embargo, resulta difícil proyectar cómo las interacciones a largo plazo entre el uso de la tierra, la gestión, y el Cambio Climático van a afectar el comportamiento del fuego, lo que representa un vacío clave en el conocimiento para la gestión sostenible. Usamos las apreciaciones de expertos para combinar opiniones sobre regímenes de fuegos pasados y futuros de 99 investigadores en el tema de fuegos de vegetación. Preguntamos por determinaciones cualitativas y cuantitativas de la frecuencia, tipo, e implicaciones de los cambios en los regímenes de fuegos desde el inicio del Holoceno hasta el año 2300.

**Resultados** Quienes respondieron indicaron alguna influencia humana directa en los fuegos de vegetación desde al menos ~ 12.000 años atrás, en los que la variabilidad climática perduró como la conductora dominante de los cambios en los regímenes de fuego hasta hace aproximadamente unos 5.000 años, para la mayoría de las regiones en estudio. Las respuestas sugirieron que hubo un incremento de 10 veces en la frecuencia de cambios en los regímenes de fuego durante los últimos 250 años comparado con el resto del Holoceno, correspondiendo en primer lugar con la intensificación y expansión del uso de la tierra y luego con el Cambio Climático antropogénico. Mirando al futuro, predicen que los cambios en los regímenes de fuego se intensificarán, con incrementos en la frecuencia, severidad, y tamaño en todos los biomas con excepción de los ecosistemas de pastizales. Los regímenes de fuego muestran diferente sensibilidad climática a través de los biomas, aunque la probabilidad de cambio en el régimen de fuego se incrementa con mayores escenarios de calentamiento en todos los biomas. Predicen asimismo que la biodiversidad, el almacenamiento de Carbono, y otros servicios ecosistémicos, van a decrecer para la mayoría de los biomas bajo escenarios de mayores emisiones. Presentamos recomendaciones para la adaptación y mitigación bajo regímenes de fuego emergentes, mientras que reconocemos que las opciones de manejo están condicionadas bajo escenarios de mayores emisiones.

**Conclusiones** La influencia de los humanos en los regímenes de fuego se ha incrementado en las últimas dos centurias. Las perspectivas ganadas sobre incendios pasados deben ser consideradas en las estrategias de manejo de tierras y de fuego, aunque un nuevo comportamiento del fuego es probable, dado que la disrupción humana en las comunidades vegetales, en el clima, y en otros factores no tiene precedentes. Los regímenes de fuegos futuros probablemente degraden algunos servicios ecosistémicos clave, al menos que el Cambio Climático sea agresivamente mitigado. Las apreciaciones de los expertos complementan los datos empíricos y modelados, proveyendo una perspectiva más amplia de la ciencia del fuego para informar a los decisores y priorizar futuras investigaciones.

## Background

Human alteration of land cover and climate is reshaping wildfire on Earth (Andela et al. 2017; Bowman et al. 2020; Davis 2021; Pereira et al. 2022; Ellis et al. 2022). Most terrestrial ecosystems have coevolved with fire over millions

of years, and many require periodic disturbance to maintain ecosystem structure and function (Bond et al. 2005; Harris et al. 2016). Yet, when fires exceed their historical patterns of intensity, extent, severity, seasonality, and frequency (hereafter *fire regime*; Fig. 1a), they can harm

biodiversity (Kelly et al. 2020; Feng et al. 2021), climate (IPCC 2021), and societies (Doerr and Santín 2016; Johnston et al. 2021; Jones 2017). In some regions, recent state changes in fire regimes have reduced ecosystem services, including air quality, water availability, habitat, and ecosystem carbon storage (McClure and Jaffe 2018; Pausas and Keeley 2019; Collins et al. 2021; Xie et al. 2022). Such changes in fire regime can cause loss of life and property, degradation of health, acute risk to fire managers, emergency evacuations, and other socioeconomic impacts (Balch et al. 2020; Raymond et al. 2020).

In the past and across large spatial scales, the dominant driver of fire regimes has been the interaction between climate and vegetation (Girardin et al. 2013; Abbott et al. 2016; Harris et al. 2016; McDowell et al. 2020; Molinari et al. 2020). All aspects of climate, but especially patterns of precipitation and temperature influence plant community composition and its moisture content. Climate and weather also control ignition sources, with lightning being the most common natural source of wildfire. Consequently, climate lays the foundation for fire regimes through fuel availability, flammability, and ignition likelihood (Bowman et al. 2009; Scholten et al. 2021; Chen et al. 2021a).

As humans modified global patterns of vegetation, ignition, and climate over the past several millennia (Watson et al. 2018; Abbott et al. 2019; McDowell et al. 2020; Ellis et al. 2021), fire disturbance became progressively more anthropogenically influenced at local to global scales (Hantson et al. 2015; Nowacki and Abrams 2015; Lestienne et al. 2020; Hagemann et al. 2021) (Fig. 1a). For example, humans have directly modified vegetation type and density for 77% of the Earth's terrestrial surface, primarily through agriculture, with myriad consequences for fuel characteristics and ignition sources (Marlon et al. 2008; Bowman et al. 2011; Balch et al. 2017; Watson et al. 2018; Słowiński et al. 2022). Likewise, climate disruption has influenced all of the Earth's ecosystems, supercharging wildfire in some regions (Turco et al. 2017, 2018; Wasserman and Mueller 2023).

Understanding the characteristics and sensitivity of fire regime change is necessary for sustainable land management as well as climate change mitigation, adaptation, and planning (Cochrane and Bowman 2021; Moritz et al. 2014). However, our understanding is incomplete for relationships linking climate, land use, and fire regimes in the past, present, and future. In this context, we combined scientific opinions about the drivers and consequences of fire regime change in the Holocene and near future. Combining assessments from multiple sources allows an integrative evaluation of the range of possible futures complementary to numerical model projections (Morgan 2014; Sayedi et al. 2020; Schuur et al. 2013).

We intended these assessments to address the current needs of decision makers and ecosystem managers to better understand and apply the consensus view from the research community.

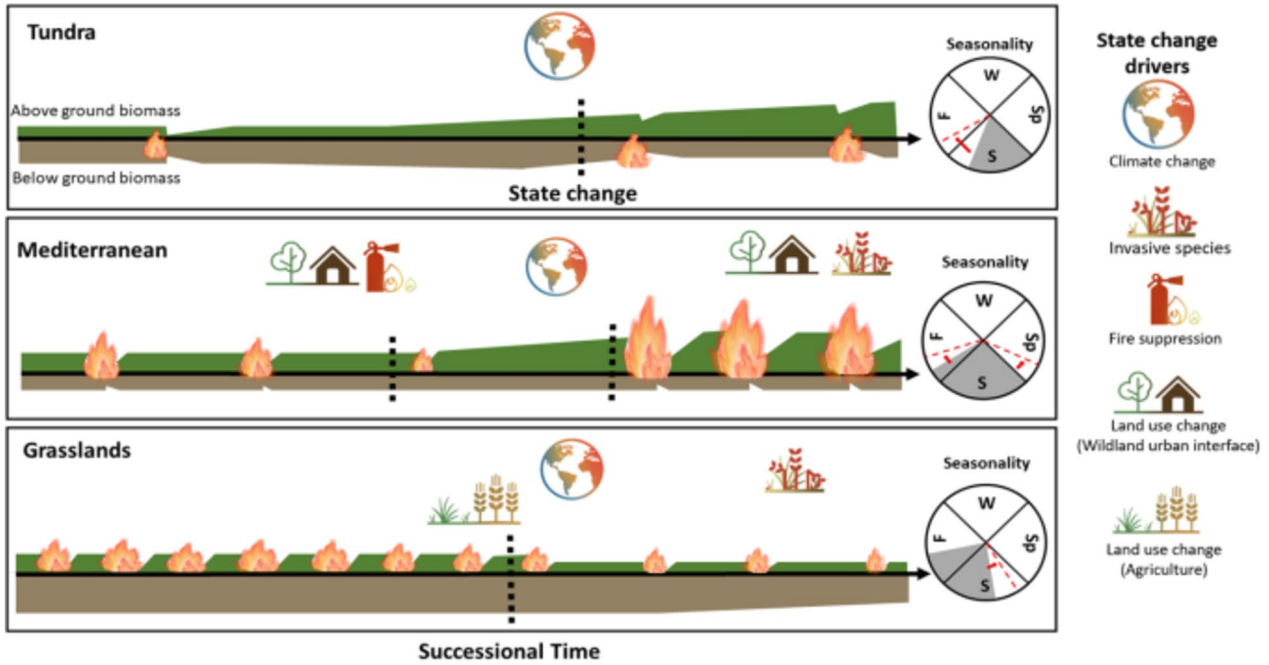
Using the collected informed opinion from experts, we evaluated centennial to millennial-scale state changes (Fig. 1a) in past, present, and future fire regimes at both regional scales and biome levels. We were motivated by four topic questions: How have fire regimes varied during the Holocene (the last ~11,700 years)? How likely are fire regime state changes under different future climate change scenarios? What component of ecosystems will be affected by potential future fire regimes? and What types of human activities could be the most effective for mitigation and adaptation under future fire regimes? We used a questionnaire to collect quantitative and qualitative assessments from experts for specific biogeographic realms and biomes from around the world (Fig. 1b; [Supplementary Information](#)).

## Methods

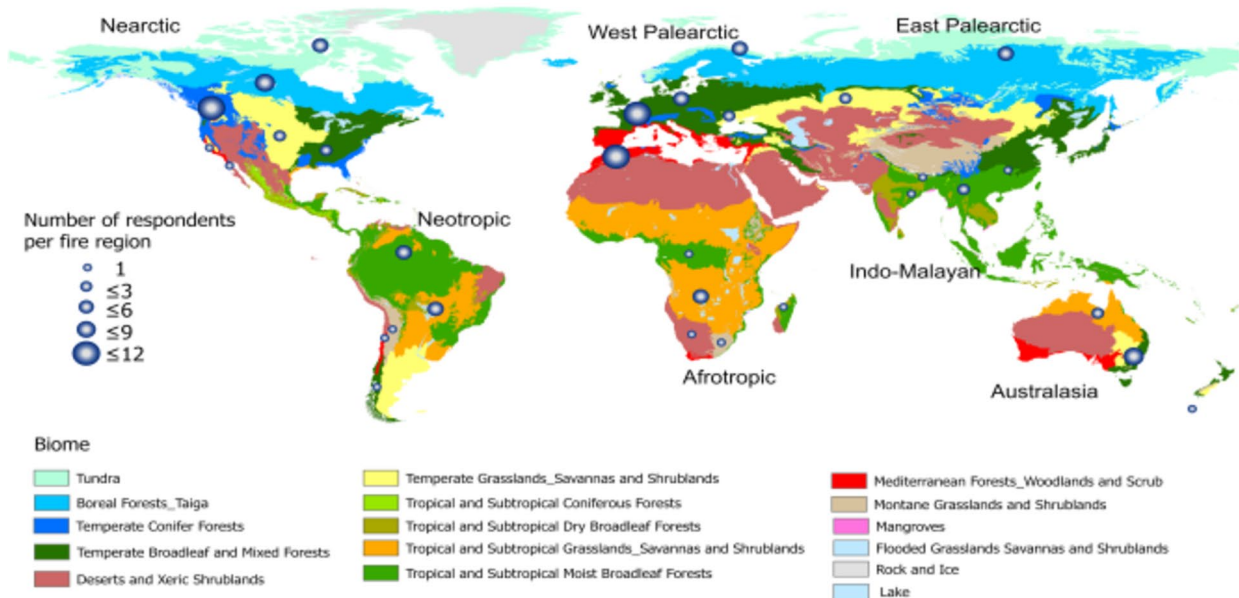
We used expert assessment to evaluate the risk of fire regime change and its consequences in the future. The concept and initial preparation for this study emerged from a September 2016 paleofire workshop held in Beguey, France, supported by the PAGES (Past Global Changes) Global Paleofire Working Group 2. At that meeting and through 2020, we completed a literature review of both scientific and policy related documents about wildfires and fire regime change. Following best practices from expert assessment and expert elicitation (Bamber and Aspinall 2013; Morgan 2014; Sutherland and Burgman 2015; Sayedi et al. 2020), we designed a structured questionnaire to gather scientific opinion on changes in fire regimes and their effects on ecosystems, climate, and societies (Supplementary Information). We focused on centennial-to-millennial changes in past, present, and future fire regimes across the globe (seven biogeographic realms and 11 biomes) to consider long-term processes beyond observational and instrumental records. After two testing rounds, we distributed the final questionnaire containing 15 questions to 430 scientists with fire related expertise. To include both academic and applied wildfire experts, we invited coauthors from the papers in the background review as well as referrals from workshop participants and all respondents who filled out the questionnaire.

Of the 430 invitees, we collected 124 filled questionnaires from 99 respondents (included here as coauthors), with some respondents completing the questionnaire for more than one fire region, which explains the higher number of filled surveys. Respondents were from 23 countries (Fig. S24) and were 46% female, 45% male, and

a) Fire regime state change



b) Respondents per fire region



**Fig. 1** a Conceptual diagram of fire regime characteristics and state changes for three example biomes. Fire regime is defined in terms of spatial (e.g., extent, type, patchiness), temporal (e.g., frequency, interval, seasonality), and physical (e.g., intensity, severity) fire characteristics. The size of flame in the figure represents fire extent, and the vertical placement of the flame represents fire type (e.g., surface vs. crown). The green and brown bands represent above- and below-ground biomass, respectively. The vertical black dashed lines represent fire regime state change. The gray wedges represent fire seasonality before fire regime change: W: winter, Sp: Spring, S: summer and F: fall/autumn. Red dashed lines inside wedges represent new fire regime seasonality after state change b The location of the fire regions used in this study (Olson 2001) with the number of respondents per fire region



9% unspecified (Table S2). The primary research disciplines, as identified by the respondents themselves, were paleoecology (55%), ecology (17%), and other fields, such as geography or geosciences (28%). Each response was specific to one biogeographic realm-biome combination, which we defined as “a fire region” (Fig. 1). We received responses for 70% of flammable land area worldwide (total land surface excluding rock, ice, and lakes; Fig. 1b and S1, Table S2), reflecting diverse global bioclimatic, socioeconomic, and fire regime characteristics (Olson et al. 2001).

The questionnaire included detailed background information and instructions to reduce the effects of availability bias and increase the likelihood of commensurate responses across experts from different realms (Morgan 2014; Sayedi et al. 2020). The questionnaire included a description of representative concentration pathways (RCP) scenarios (Moss et al. 2008) and predicted temperature and precipitation (Supplementary Information). We also provided detailed definitions and references on the concepts of fire regime and state change (details in Supplementary Information-questionnaire). Briefly, we defined state change as a large and sustained departure from a set of specific system behaviors. Fire regime state changes can be triggered by disturbances of varying duration and intensity, including internal and external drivers such as climate change, vegetation shifts, and human activities (Fig. 1a). These disturbances can result in reversible or permanent changes to the fire regime. For example, a state change in a fire regime may be expressed as a shift in the central tendency, such as a decrease in mean annual area burned, a change in overall variance, such as an increase in interannual variability of area burned, or in the frequency of events that exceed an ecological threshold, such as a change in the return interval of crown fires (Scheffer et al. 2009).

The questionnaire focused on four topics: (1) past fire regimes, (2) current fire regime states, (3) future fire projections, and (4) interventions and management. For each section, respondents provided self-reported expertise, confidence level, sources used to generate estimates (e.g., published or unpublished empirical data, professional opinion; Table S3), along with a list of sources of uncertainty (Table 1). For future fire behavior, we asked experts to provide estimates for short (2050), medium (2100), and long (2300) time frames. We included the 2300-timestep to account for lags in the response of fire regime to disturbance, as it can take several decades or centuries to fully manifest. Although climate projections and estimates of system response become increasingly uncertain for distant time frames, we asked respondents to think conceptually about the eventual fire regime state if the described climate conditions persisted. We

compared estimates for all three time-steps with current fire regime.

For most of the quantitative questions, we asked for three quantiles (5% lower, 50% central, and 95% upper) to build a credible range of 90%. We primarily discuss the distribution of central estimates for the main article, though full ranges are shown in the [Supplementary Information](#). The qualitative questions included both open-ended and numerical responses. The open-ended questions were analyzed using a thematic analysis method, where we applied coded categories to each response. We calculated descriptive statistics in R version 3.6.1 (R Core Team 2019). We used ArcGIS Pro 3.0 for spatial analyses and visualizations.

In the following sections, we present estimates and suggestions based on experts' responses, which we compare with relevant literature. Because not all fire regions have the same number of respondents, we focus on identifying general patterns and trends rather than providing specific results for individual regions with limited representation (though the comprehensive results by fire region are included in the Supplementary Information). Consequently, we focus on general patterns and trends among biomes and biogeographic realms to create a more comprehensive and nuanced understanding of the global patterns of fire regimes.

## Results

### Past and present drivers of fire regime

The median estimated number of fire regime state changes during the Holocene varied across biomes, ranging from two (Tundra) to seven (Temperate grasslands, savannas, and shrublands) (Fig. S2). Respondents identified the timing of the three largest fire regime state changes in the Holocene, with 16% of responses suggesting the Early Holocene (ca. 11,700-8,200 BP), 27% the Mid Holocene (ca. 8,200-4,200 BP), and 57% the Late Holocene (ca. 4,200-0 BP). Survey responses indicated an increase in fire regime changes after the Industrial Revolution in 1760 AD, with 20% of identified fire regime changes occurring since that time (Fig. S3). This suggests a ~10-fold increase in the frequency of fire regime changes over the last 250 years compared with the rest of the Holocene. The Nearctic and Australasia regions may have experienced even larger recent changes in fire regime, with 30% and 36% of the identified fire regime changes occurring in the past 250 years, respectively.

Climate was identified as the main driver of fire regime changes during the Holocene (47% of responses), especially in the Early and Mid-Holocene. Direct human activity was the second most identified driver of changes (32%). The onset of strong human influence on fire regimes varied among regions (Fig. 2), but direct human

influence was the greatest during the Late Holocene. For the post-industrial period (1950 AD-present), climate change and direct human activity were mentioned equally often as drivers (40% and 46%, respectively). Vegetation and fuel were mentioned the least for each time interval (Fig. S4), possibly because these factors respond to climate on centennial timescales, emphasizing the importance of temporal scale when considering drivers.

Respondents identified several dimensions of altered fire regimes over the past 250 years, including changes in fire frequency, extent, and severity (Fig. S5). There was a wide range of human-wildfire interactions identified that were specific to fire regions. For example, in Indo-Malayan Tropical forests, deforestation due to economic development has modified the fuel structure and ignition sources, potentially increasing fire activity in an ecosystem where it was historically rare. In multiple regions, other fire management strategies such as increased fire suppression and exclusion of Indigenous or traditional prescribed burning practices were recognized as potential drivers of increasing fuel loads and ultimately increased fire severity, especially when coupled with recent temperature increases. In seven out of eleven biomes, respondents identified a change in fire regime since the Industrial Revolution (Fig. S3), with the median estimate of current fire regime duration lasting less than 200 years (Fig. S6). The duration of the current fire regime was less than 70 years for Tundra; Mediterranean forests, woodlands, and scrub; Tropical and subtropical moist broadleaf forests; and Tropical and subtropical grasslands, savannas, and shrubs (Fig. S6).

#### Timing and type of future fire regime change

Respondents provided estimates of fire regime change for their fire region in 2050, 2100, and 2300, based on the IPCC RCPs 2.6, 4.5, and 8.5, representing increasingly severe greenhouse gas emission scenarios. Most respondents predicted that the likelihood of fire regime change would increase with time and climate change severity (Figs. S9–10). For example, under RCP8.5, nine biomes were predicted to have  $\geq 50\%$  chance of experiencing a fire regime change by 2050, compared to one biome for RCP2.6. However, by 2100 and 2300, five biomes were predicted to have a  $\geq 50\%$  likelihood of fire regime change under RCP2.6 (Fig. 3a and S9–10). The climate sensitivity—which we defined as the amount of increase in the likelihood of a fire regime change across RCP scenarios—varied substantially among biomes. For example, RCP2.6 was predicted to be enough to initiate a fire regime change for Tundra, whereas the predicted likelihood of fire regime change was much lower under RCP2.6 than RCP8.5 for Boreal forest (Fig. 3b and S11–12). Results

from all scales, years, and scenarios are presented in the Supplementary Information.

The climate sensitivity estimates from this study agreed with many model-based studies projecting future changes in fire activity (Bowman et al. 2020). Climate drivers such as fire weather and fire danger days are projected to increase in many areas of the globe (IPCC 2021), particularly in fire-prone regions such as the Mediterranean basin, southwestern USA, and subtropical regions of the Southern Hemisphere (Bowman et al. 2017; Cook et al. 2022). An increase in extreme fire behavior is also projected in many regions such as the Amazon, western USA, Mediterranean and southern Australia (Turco et al. 2018; Bowman et al. 2020). Substantial intensification of fire behavior is projected for higher latitudes through the end of the 21st century (Flannigan et al. 2013; Bergeron et al. 2010; Abbott et al. 2021; Talucci et al. 2022), though local fire patterns are expected to be heterogeneous (McCarty et al. 2021).

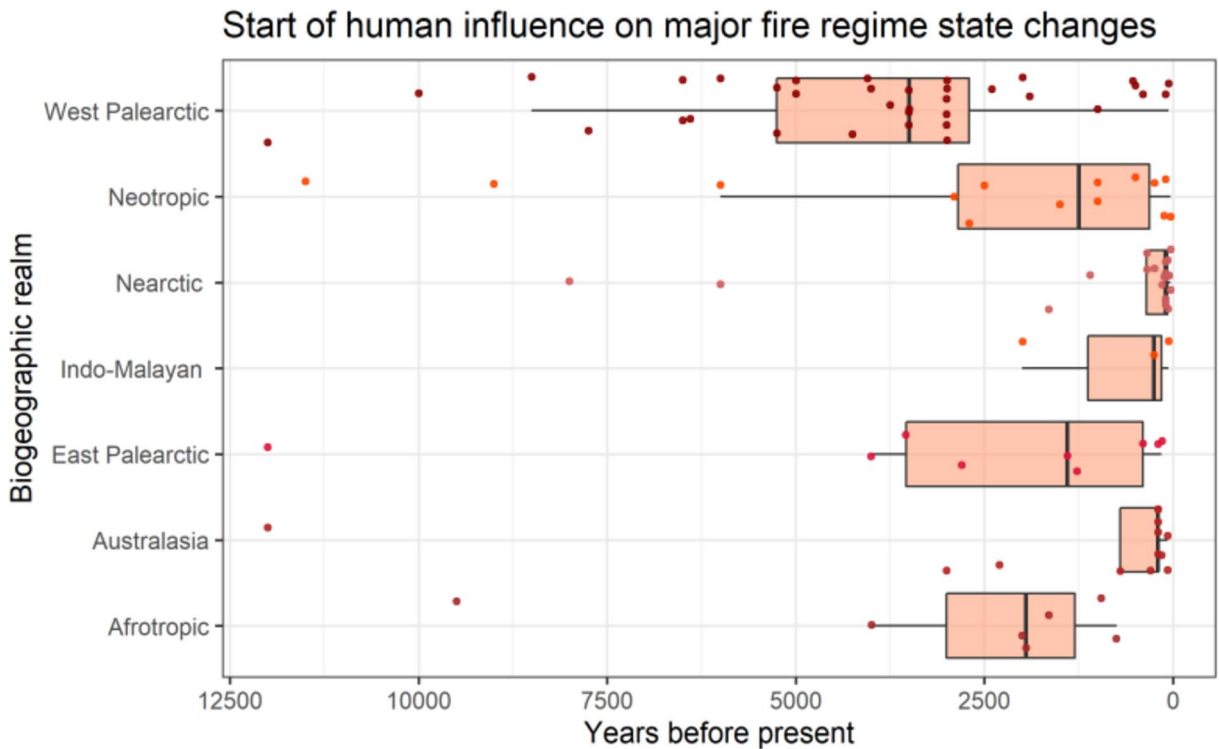
Respondents predicted an intensification of some components of the fire regimes across biomes, with burned area, frequency, and severity increasing for all but a few biome-time-step combinations (Fig. 4). The magnitude of change generally increased with time and with higher emission scenarios (Figs. S13–16). These predictions are consistent with other studies, suggesting a substantial intensification of fire regimes (i.e., an increase in fire extent, severity, and frequency) with greater warming. For example, panarctic wildfire emissions have been predicted to increase by 250% by 2100 under RCP8.5 (Abbott et al. 2016). Similarly, fire emissions in Finnish boreal forests have been predicted to experience a 190% increase, even under RCP4.5 (McCarty et al. 2021). In Europe, burned area is predicted to increase between 180 and 360% until the end of the century under RCP8.5, but less than 60% under RCP2.6 (Wu et al. 2015). In southern Europe, burned area is projected to increase 5–50% per decade under high emission scenarios (Dupuy et al. 2020), whereas with a 1.5° to 3 °C warming burned area is projected to increase 40–100% in Mediterranean Europe (Bowman et al. 2020). An increase in burned area is likewise predicted for the Amazon and western USA (Bowman et al. 2020; Abatzoglou et al. 2021). In the grasslands of central Asia, the potential burned area is expected to increase 13% by 2080 (Zong et al. 2020).

Contrary to most regions, less burning was predicted by experts for some parts of Africa under warmer scenarios. This is consistent with observations (Moritz et al. 2012; Andela and van der Werf 2014) that reveal a more intense fire regime under cooler and wetter climates that favor fuel build-up in these dry regions (Daniau et al. 2013; Moritz et al. 2012). More generally, fire frequency

a)

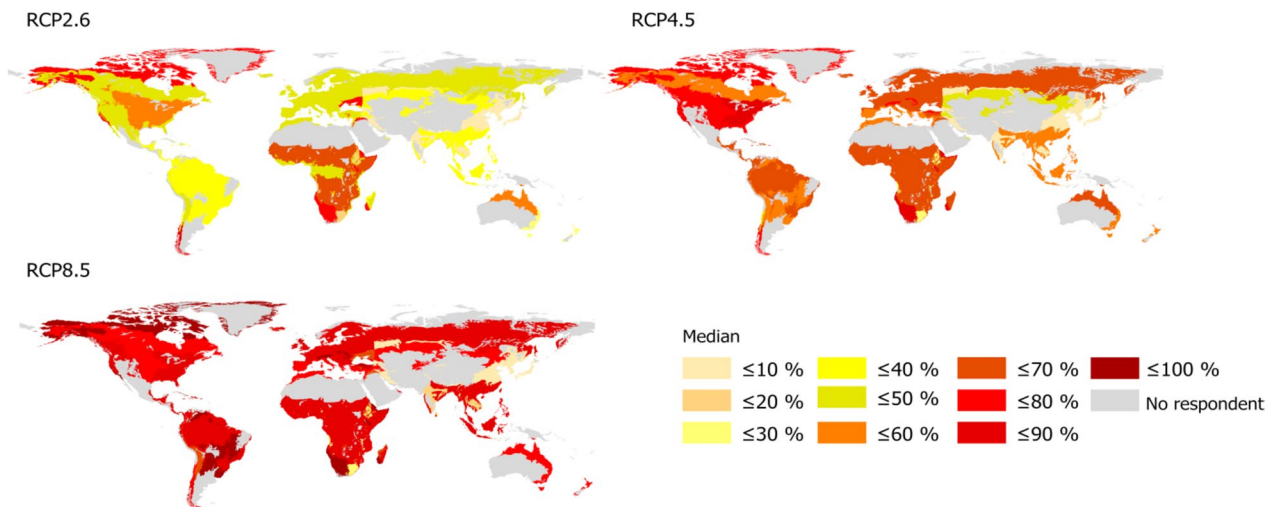


b)

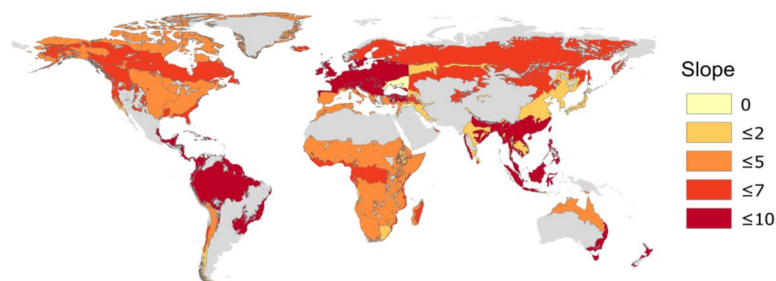


**Fig. 2** Estimates of when the earliest human-driven fire regime state changes occurred during the Holocene as estimated by respondents. **a** 75th percentile values of the earliest time humans were identified as a major driver of fire regime change by respondents. **b** Points represent individual responses; box plots represent the median, quartiles, most extreme points within 1.5 times the interquartile range (IQR), and points beyond 1.5 times the IQR

a) Likelihood of fire regime change by 2100



b) Climate sensitivity of fire regime by 2100



**Fig. 3** Estimated likelihood of fire regime change under different RCP scenarios **a** Median of central values of the likelihood of fire regime change for year 2100 under three RCP scenarios. **b** Climate sensitivity of fire regime change for each biome based on the slope between the estimated likelihood of a fire regime change (%) and the amount of radiative forcing across the three RCP scenarios ( $Wm^{-2}$ ). The higher values represent a greater climate sensitivity and increased fire regime likelihood moving from RCP2.6 to RCP8.5

and severity are expected to decrease in fuel-limited ecosystems under drier conditions, whereas they are likely to increase in wetter ecosystems where fuel humidity currently limits fire (Rogers *et al.* 2020).

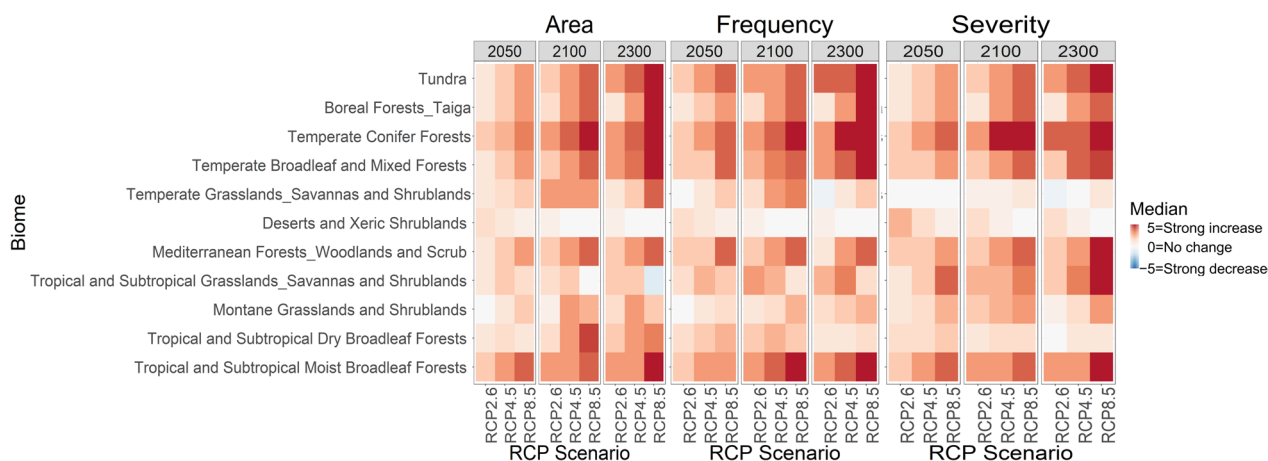
Many respondents from most fire regions mentioned the importance of recognizing that within a single fire region, different ecological communities may experience divergent future fire trajectories (Moritz *et al.* 2012). For example, the risk of fire-climate interactions can vary in different types of conifer forests in western North America (moist-dry-subalpine) based on their elevation (Halofsky *et al.* 2020). Likewise, substantial differences exist between eastern and western Boreal forests of the Nearctic, with the latter experiencing increasing annual area burned (Chavardès *et al.* 2022). However, projected

climate change could create similar increases for eastern and western Boreal forests of the Nearctic during the mid- to late-21st century (Chavardès *et al.* 2022).

**Consequences of fire regime change**

Respondents estimated that biodiversity (habitat extent, diversity and quality), carbon stocks (soil and vegetation), and ecosystem services (other benefits for societies living in the region) would decrease with future fire regime change. The magnitude of change was predicted to increase for more extreme warming scenarios and longer timeframes in most biomes, similar to the patterns for other questions (Fig. 5 and S17-20). The estimates of fire consequences were highly spatially variable (Fig. 5). Negative impacts estimated for biodiversity were greatest





**Fig. 4** Direction and magnitude of change of fire regime characteristics as estimated by respondents. Median estimates of changes in fire extent (area), frequency, and severity for global greenhouse gas emission scenarios RCP2.6, RCP4.5 and RCP8.5 in 2050, 2100, and 2300

in tropical, semiarid, and arid ecosystems, whereas decreases in carbon stocks were more uniform across biomes. The large projected decrease in carbon stocks for Boreal forests and Tropical and subtropical moist broadleaf forests was particularly concerning, given how these ecosystems contain much of global terrestrial carbon (McDowell et al. 2020; Pan et al. 2011; Schuur et al. 2022). Similarly, the strong projected loss of ecosystem services, including air, water, and soil quality in Africa, South America, and southern Europe could further burden areas already experiencing disproportionate climate impacts (Ogunbode 2022).

The projected response of albedo displayed significant temporal complexity, representing a dimension of ecosystem response that was generally expected to improve with fire regime changes (Fig. 5 and S21). It is important to note that the relationship between fire emissions and albedo is multifaceted, varying depending on factors such as the region and land surface type. These factors can lead to different effects on albedo. For example, while aerosols from fire emissions may initially reduce albedo by promoting snowpack melting, it is worth considering the net negative radiative impact of such emissions, as demonstrated in (Tian et al. 2022), which can result in a mid-term cooling effect.

Our survey respondents estimated a general increase in albedo from 2050 to 2100 as fire regimes increased. However, it is noteworthy that this trend reversed for some

biomes beyond 2300, indicating a transient stabilizing effect on climate (Fig. 5 and S21). The intricate analysis encompassing various scales, scenarios, and years can be found in the Supplementary Information.

This discussion underscores the complexity of fire emissions and their impact on albedo, with outcomes varying depending on regional factors and land surface characteristics. Furthermore, the influence of fires on albedo evolves over time, making it a dynamic and intricate phenomenon.

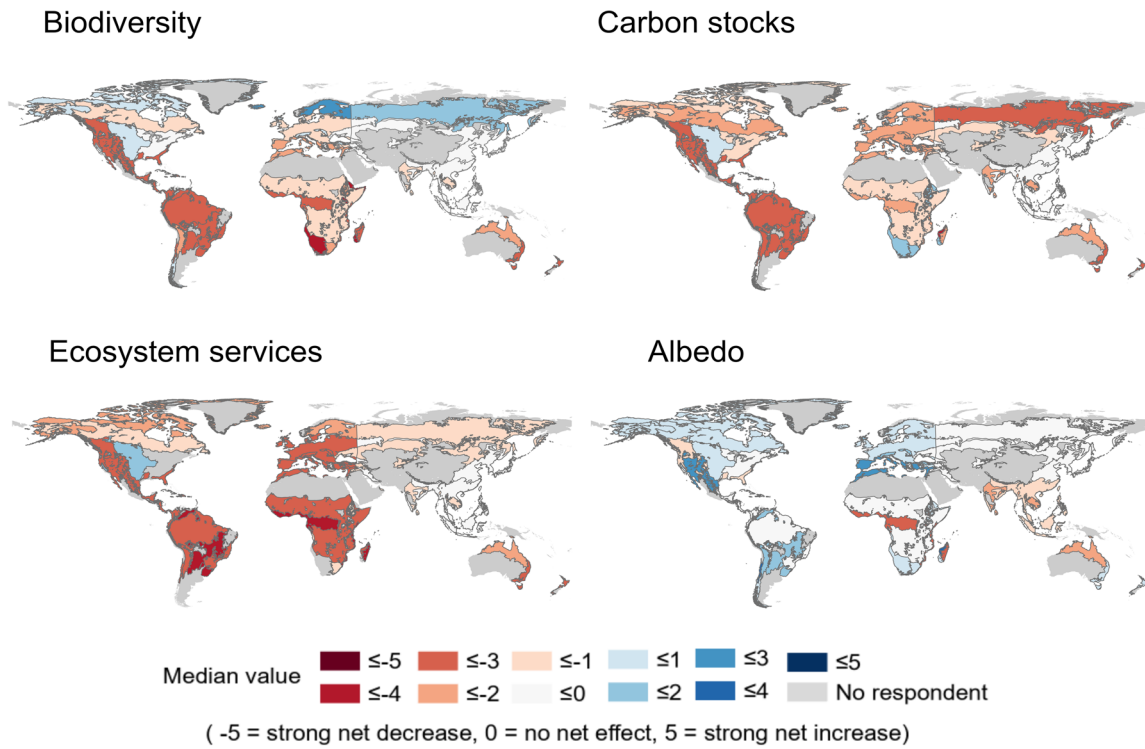
#### Drivers of fire regime change and management options

The identified fire regime drivers varied substantially by both warming scenario and fire region. Under higher emissions (i.e., RCP4.5 and RCP8.5), most experts suggested that climatic factors would be the dominant driver of fire regime change. Conversely, under RCP2.6, only about half of the responses indicated that climatic factors would be the most important driver. For Australasia and Nearctic fire regimes, climatic factors were identified as the most important driver for all scenarios. In the Neotropic, Afrotropic, and Indo-Malayan biogeographic realms, human activities were identified as the most important fire driver, with an average of 18% of responses across all scenarios. Although vegetation and fuel were also frequently mentioned, accounting for 22% of total responses, these factors were never suggested as the most important driver of future fire regime changes

(See figure on next page.)

**Fig. 5** The net effect of predicted fire regime changes on ecosystem values in the future as estimated by respondents. **a** The maps show the median value of expert estimates under RCP4.5, year 2100 (see Figs S18–21 for changes in RCP2.6 and RCP8.5). **b** Average values and standard error for year 2100 under three RCP scenarios. The full names of the biomes can be seen in Fig. 1 **b** Experts responded on a -5 to 5 scale for how strongly the future fire regime of the three RCP scenarios would affect the indicated parameters in the year 2100 (-5 = strong net decrease, 0 = no net effect, 5 = strong net increase)

a) Median values for RCP4.5 in the year 2100, per fire region



b) Summary values for all RCP scenarios in the year 2100, per biome

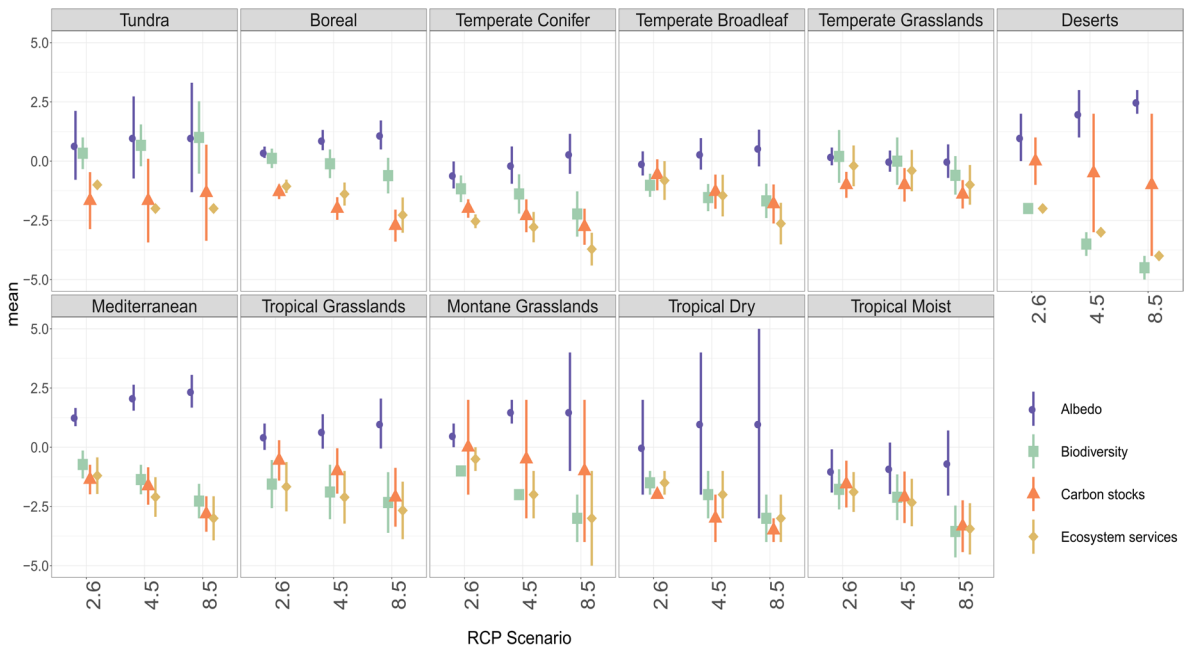


Fig. 5 (See legend on previous page.)

(representing approximately 1% of the responses (Fig. S22)), highlighting the complex interplay amongst climate, fuel, and fire, especially on centennial timescales.

While we have summarized and combined the management suggestions from respondents below, we emphasize that suitable management applications vary substantially between and within biomes. The detailed responses for each fire region can be found in the Supplementary Information. Responses suggested that human actions for the next 20–50 years will be highly influential in determining how different ecosystem values (e.g., biodiversity, carbon stocks) are likely to change. Only 14% of the respondents indicated that human actions have no effect, mainly limited to albedo (Table S1). Only 10% of responses recommended non-intervention, which instead was rated as a negative or unhelpful approach, though there were mixed opinions across and within fire regions.

About half of the respondents considered direct land management as an important approach for mitigating impacts of changing fire regime. Several landscape management strategies had general support, including increasing landscape heterogeneity, diversification, and reduction of landscape flammability by targeted land use, as well as creating buffer zones around primary and old-growth forests (Barredo et al. 2021). Attention to the human–fire interface was a common recommendation, as certain levels of population (housing) density, wildland–urban interface, and landscape connectivity can affect the characteristics and societal consequences of fire (Syphard et al. 2007; Archibald et al. 2012; Moritz et al. 2014; Kelley et al. 2019). Fuel treatment, vegetation management, urban/suburban development design, and sustainable agriculture (cropland optimization, savanna conversion management, integrated grazing, traditional agroforestry, etc.) were identified as potentially useful mitigation approaches.

There was a high level of agreement that prescribed burning would help biodiversity and ecosystem services, but there were mixed opinions about its effect on carbon stocks, potentially because of successional complexities and the fact that the area subject to prescribed burning is relatively small compared to the total burned area each year. There was less agreement about other fuel management techniques such as forest clearing or thinning, potentially because of the variety of vegetation types under consideration, and the lack of consensus in the literature on mechanical treatments. Even though activities such as clear-cutting reduce fuel, fire activity may increase due to the effects on microclimate and residual biomass, therefore changing fuel structure and composition (Lindenmayer et al. 2009, 2020; Maxwell et al. 2019; Stephens et al. 2020; Baker and Hanson 2022). Conversely, traditional or Indigenous practices—such as cultural burning—were suggested as beneficial in

reinforcing fire regime resilience, protecting biodiversity, and mitigating damage by preventing extreme wildfire events (Christianson 2015; Fletcher et al. 2021; Hoffman et al. 2021). However, respondents also noted that many current burning practices—such as slash-and-burn techniques—no longer resemble traditional cultural burning practices as they existed before industrialization.

There was a high level of agreement among experts who mentioned restoring vegetation (i.e., native habitat conservation and restoration; establishment of climate-adaptable vegetation communities) as a positive impact on all ecosystem values. There were mixed opinions about introducing fire resilient plants, but agreement on the positive effect of reducing flammable invasive plants. The natural or artificial selection of nonflammable species was mostly considered to have a negative effect on biodiversity and ecosystem services but variable effects on carbon and albedo.

Direct fire management was recommended in 17% of responses. In the case of fire suppression as a direct fire management strategy, there was less agreement about the direction of effects on different factors. Fire suppression can have a negative impact on fire-dependent ecosystems, and aggressive suppression policies have led to fuel accumulation and increased flammability that have contributed to today's extreme wildfire events (Marlon et al. 2012; Valese et al. 2014; Schoennagel et al. 2017; Parisien et al. 2020). A greater proportion of responses (23%) indicated the importance of social or political awareness and action. These initiatives include climate mitigation, public education on fire risks and their ecological roles, direct (e.g., controlled burns, firebreak establishment) and indirect (e.g., illegal logging regulations, land-use policies) conservation policies, and the incorporation of Indigenous and traditional knowledge. (Table S1).

For most biogeographic realms—though notably not the Afrotropic and the Indo-Malayan—respondents projected that under RCP8.5, humans would have a decreasing capacity to control wildfires. This was most obvious for the Neotropic, Nearctic, and Australasia for both 2100 and 2300. Respondents for the Neotropic and Nearctic fire regimes indicated that this same decreased capacity was likely to apply under RCP4.5. For RCP2.6, 70% of respondents indicated that humans would maintain some effectiveness in managing fire-impacts (Fig. S23).

#### Sources of uncertainty

For each question, respondents identified their main sources of uncertainty (Table 1). The most common responses were limited observational data, inadequate modeling frameworks, and system complexity, particularly social dimensions. Respondents emphasized that

**Table 1** Sources of Uncertainty in Survey Estimates

Past		Current		Future		Management	
Sources of uncertainty	%	Sources of uncertainty	%	Sources of uncertainty	%	Sources of uncertainty	%
Limited proxy-paleo data	23	Spatial variability	31	Vegetation shift	12	Political and socio-economic	22
Spatial variability	17	Limited data	17	Ecosystem interactions and feedbacks <sup>b</sup>	12	Capacity and effectiveness of management and intervention	13
Proxy resolution	15	Combustion/severity	8	Climate change	10	Climate change	11
Model limitation	11	Small fire detection/remote sensing	7	Political and socio-economic	8	Ecosystem interactions and feedbacks	10
Human influence <sup>a</sup>	11	Human activity	8	Model limitation	7	Technology developments	6
Proxy reliability	8	Recent changes	4	Fire management and intervention	7	Science and management connection	4
Temporal variability	6			Land use change	6	Vegetation state	4
Chronological	5			Precipitation	6		

This table presents the major sources of uncertainty identified by respondents for each section of the survey. The percentages represent the proportion of responses within each category for the respective sections. Note that the table includes only the significant sources of uncertainty, and the columns may not sum up to 100% due to the omission of less prominent factors

<sup>a</sup> E.g., Fire management history, land use history, etc.

<sup>b</sup> E.g., Climate-vegetation dynamics, albedo and new vegetation, vegetation-fire interaction, fuel-ignition relationships, climate-human intervention, climate-vegetation feedbacks

the impact of different human activities is not completely understood for the past or present, and that untangling different fire drivers can be difficult due to multiple interactions and feedbacks, which are often not represented in coupled models. Respondents also mentioned that the unprecedented rate of ongoing climate change and heterogeneity of human activities made estimations of fire return intervals and other dimensions of fire regime uncertain. Respondents had uncertainties about emergent economic and policy direction, cultural beliefs, and available technologies as tools to combat changing fire regime. Additional sources of uncertainty included the spatial variability and a lack of information about fire severity impacting ecological succession, albedo, and carbon-climate feedbacks.

## Discussion

This expert assessment synthesized global fire expertise to explore the possible magnitude, type, and consequences of human-wildfire interactions in the Holocene and Anthropocene. The results confirmed the growing consensus in the literature that we have entered a new epoch of fire behavior dominated by climate change and direct human activity (Bowman et al. 2020; Mottl et al. 2021). The geographic diversity of past and future fire regimes also emphasized the importance of local factors, especially human culture and plant community. In the following section, we compare our survey results with the broader literature and summarize potential management and policy implications.

## Fire regime change as an indicator of the Anthropocene

This study adds to the consensus that human activity dominates vegetation disturbance and distribution globally (Harris et al. 2016; Watson et al. 2018; Abbott et al. 2019; Bowman et al. 2020; Mottl et al. 2021; Słowiński et al. 2022). The ten-fold acceleration of fire regime change over the past two centuries aligns directly with recent paleoecological evidence showing vegetation shifts unprecedented in the last 18,000 years (Mottl et al. 2021). Although there are still debates about the formal start of the Anthropocene (Witze 2023), our survey results provide evidence that we have entered a new epoch where fire is no longer solely influenced by natural factors but is increasingly shaped by human activities, both intentional and inadvertent (Fig. S1). After approximately 500 million years of natural wildfire regulation driven by climate and vegetation interactions (Glasspool et al. 2004), our findings indicate that fire dynamics in the Earth system are now significantly controlled by direct and indirect human actions. Notably, the quadruple combination of invasive species, fire ignition and suppression practices, land use changes, and climate change has substantially reshaped nearly every dimension of fire behavior in the Anthropocene (Fig. 1).

One of the paradoxes highlighted by our study and much previous work is that knowledge of past fire behavior is both crucial and rapidly becoming outdated. Past fire regimes provide perspective on how climate, vegetation, and human actions interacted to shape fire dynamics in the Earth system (Marlon et al. 2008; Pechony and

Shindell 2010; Molinari et al. 2018). For example, paleo-ecological knowledge about vegetation community and historical amplitude of fire regime change in a given biome can provide estimates of historical thresholds and optimal vegetation structure for management purposes (Hennebelle et al. 2018). Likewise, fire histories show human-vegetation-climate linkages, such as decreasing tree cover creating microclimates favorable to the encroachment of flammable vegetation in the understory (Feurdean et al. 2020). However, we have exceeded the envelope of global fire behavior observed in the Holocene, meaning that human-fire interactions could have extreme and unexpected outcomes (Bova et al. 2021; Hammond et al. 2022). We should not assume that historical management practices will suffice (Pyne 2007; Crandall et al. 2021; Ellis et al. 2021) given accelerated rates of vegetation change (Mottl et al. 2021; Słowiński et al. 2022; Talucci et al. 2022), climate destabilization (Armstrong McKay et al. 2022; Breyer et al. 2023), the emergence of novel biotic and abiotic conditions (Ordonez et al. 2016; Finsinger et al. 2017; Burke et al. 2019), and increasing human population and affluence. For example, the expansion of human development in fire-prone areas in the western US is increasing both wildfire incidence and cost of suppression (Balch et al. 2017).

#### Climate and culture control native and invasive vegetation

Ecosystem response to changing fire disturbance can take centuries to millennia (Carcaillet et al. 2010, 2020). In the Anthropocene, which is characterized by overlapping and interacting human disturbances, the emergence of stable fire regimes depends on synergies among fire, vegetation changes, and climate within a region.

The combination of climate and species change can shift the balance between native and invasive taxa. New fire-adapted species have altered vegetation structure in many fire-prone regions, including cheatgrass (*Bromus tectorum*) in some desert environments of the USA, tussock grass (*Poa flabellata*) and pampas grass (*Cortaderia selloana*) in Spain, guinea grass (*Megathyrsus maximus*) and fountain grass (*Cenchrus setaceus*) in Hawaii, and black locust (*Robinia pseudoacacia*) and tree-of-heaven (*Ailanthus altissima*) in southern Europe (Maringer et al. 2012; Trauernicht et al. 2015). These species exploit and create novel disturbance niches to outcompete native vegetation during post-fire recovery. These direct and indirect effects of fire regime change can alter plant community structure and composition, often amplifying aspects of the fire regime, including fire frequency and extent (Wan et al. 2014; Bishop et al. 2020; Mirzaei et al. 2023).

As the vegetation-climate interaction evolves in the Anthropocene, many or even most communities around

the world will need to develop new cultural norms around fire (Dickinson et al. 2015; Trauernicht et al. 2015; Chapin et al. 2022). Given how controversial fire management can be, even under the best of conditions (Crandall et al. 2021; Dale and Barrett 2023), it will be crucial to establish two-way communication that prepares policymakers, managers, and the public for adaptive changes in policy and practice, including the loss of cultural and ecosystem services provided by disappearing historical fire regimes (Cassidy et al. 2022; Bowman and Sharples 2023).

#### Uncertain services

One of the clear conclusions from our study is that the novel fire regimes of the Anthropocene threaten multiple ecosystem services ranging from carbon sequestration to air quality. The erosion of these ecosystem services has already been observed in many regions (Balch et al. 2017; Canadell et al. 2021; Hammond et al. 2022; Hampton et al. 2022). Novel climatic conditions in peatlands can limit their recovery from disturbances, decreasing carbon stocks (Loisel et al. 2021). More severe and frequent fires can threaten carbon storage in Boreal forests (Walker et al. 2019), though changes to successional trajectories may offset or negate these losses in some cases (Girardin et al. 2013; Mack et al. 2021). Ozone produced during combustion can damage plant tissues, potentially doubling carbon losses by reducing post-fire photosynthesis (Lasslop et al. 2019). Because human land use and fire regimes are so closely linked, human actions such as deforestation coupled with cropland development can decrease carbon stocks at the same time as they modify the fire regime (Bowman et al. 2011; Cochrane and Bowman 2021).

The local impacts of changing fire regimes are both unequal and increasing (Bytnerowicz et al. 2016; Errigo et al. 2020; Burke et al. 2021; Chen et al. 2021b). From the negative health consequences of air pollution to threatened drinking water from post-fire floods and erosion (Marki and Stilianakis 2008; Tessum et al. 2019; Crandall et al. 2021; Xie et al. 2022; Bowman and Sharples 2023), we need to prepare for the socioecological consequences of fire regime change. These local changes are of course linked to additional global feedbacks. For example, enhanced black carbon and soot deposition associated with increased fire disturbance contributes to decreased albedo and accelerated ice melting (McCarty et al. 2021; Aubry-Wake et al. 2022). Likewise, in Indian tropical dry forests, an increase in fire activity may negatively alter forest potential for water regulation by changing soil characteristics (Schmerbeck and Fiener 2015) and atmospheric moisture recycling (Abbott et al. 2019).



### The limits of control: prevention versus treatment

Although our global-scale study may have limited application in many specific management contexts, there were some general patterns that could be informative for policymakers, managers, and researchers. Despite the substantial uncertainties associated with fire regime changes, mitigation efforts such as allowing some fires to burn to reduce fuel loads, prescribed burning, and fuel treatments will help limit fire impacts and cost (Moritz et al. 2014; Harris et al. 2016; Radeloff et al. 2018; Mietkiewicz et al. 2020). Likewise, the conservation of large, contiguous ecosystems (e.g., Kruger National Park, South Africa) allows the use of more effective wildfire management tools such as prescribed burning and increases resilience when unexpected wildfire behavior emerges (Driscoll et al. 2016; Bentley and Penman 2017; Miller 2020).

However, there was a high level of agreement across fire regions that the risk of extreme fire behavior overwhelming the capacity of these fire management tools increases under higher greenhouse gas emissions. Although the specific consequences vary by fire region and habitat type, the overall message is clear: rapid reduction of greenhouse gas emissions is needed to restore Holocene-like climate conditions (Cyr et al. 2009; Abbott et al. 2022; Breyer et al. 2023; Burton et al. 2023). This would reduce the difference between natural and managed environments and ensure long-term conservation of ecosystem functions and services, thereby preserving socioeconomic benefits (Führer 2000; Gauthier et al. 2009). Otherwise, the emergence of novel climates, vegetation communities, and fire regimes outside of the range of Holocene variability will complicate or compromise our ability to conserve habitats, ensure healthy communities, and preserve terrestrial carbon uptake and storage.

For example, without a reduction in greenhouse gas emissions, changes in fire regimes could undermine climate mitigation policies such as negative emissions through reforestation and afforestation (Anderegg et al. 2020; Veldman et al. 2019). Any carbon uptake from recovered or cultivated forests could be negated by the increased fire frequency or intensity projected for many regions (Hammond et al. 2022; Smith et al. 2020). Likewise, the available tools for fire management will likely be reduced as extreme fire weather narrows the periods when prescribed burning can safely take place (Pyne 2007; Abatzoglou et al. 2021; Bowman et al. 2017). These risks are not hypothetical. Indeed, climate-fire interactions are already eroding climate mitigation efforts in many regions by altering forest, grassland, and peatland carbon structure (Bowman et al. 2020; Carcaillet et al. 2020; Loisel et al. 2021; Dahl et al. 2023). For example, in

tropical biomes where fires have been historically rare, an increase in extreme wildfires is augmenting tree mortality leading to habitat loss, decreasing biodiversity and carbon storage (Trauernicht et al. 2015; Silveira et al. 2016; Deb et al. 2018).

### Expert assessment utility and limitations in adaptive fire management

Although this study brought together a diverse group of fire researchers, it is important to recognize that our group is not geographically balanced. Despite invitations to several hundred researchers, we received only a few responses for some fire regions (Fig. 1b), including the African subtropical and tropical grassland region, which accounts for a large portion of global area burned (Ramo et al. 2021). This reflects the broader geographical and cultural bias in ecological research generally (Moerman and Estabrook 2006), and wildfire research specifically (Bradstock et al. 2002; Hantson et al. 2016; Metcalfe et al. 2018), highlighting the need for more spatially diverse research networks. It is essential for readers to consider the limitations arising from the smaller number of participants in certain fire regions when interpreting our results, as well as research from other “global” fire studies. Furthermore, it is important to recognize that a similar expert assessment with a different group of experts, such as fire managers or policymakers, could yield different results. The perspectives and opinions shared by our participants were influenced by their background, knowledge, and expertise, constituting both the value and limitation of this exercise.

Thinking more generally about our goal of establishing effective, two-way communication among researchers, managers, and policymakers, is expert assessment a useful tool? Decision-making in landscape and fire management requires a nuanced, multi-scale understanding of human and natural systems. Currently, policymakers and managers working on fire issues are operating in an evolving environment with sometimes conflicting traditional, scientific, societal, and political information and priorities. As the physical, biological, and human factors controlling wildfire behavior change rapidly, how can we improve the rigor and breadth of the knowledge available to those facing changing fire regimes? The decisions and beliefs of resource managers and citizens are often based on news coverage, anecdotal accounts, agency tradition, or single-expert advice.

As several respondents mentioned in this study, quantitative models cannot capture all the factors influencing the evolution of fire behavior (Harris et al. 2016; Abbott et al. 2016; Hantson et al. 2016). We believe that various types of expert elicitations can complement quantitative

models to generate more robust and reliable guidance that allows adaptive management. This could range from informal interpretation of model outputs by expert panels to iterative combinations, such as expert input on management plans or machine learning models. These approaches should be (and already are in some cases) used in various aspects of fire management, from detecting fires to planning and policy, by providing a benchmark or improving the initial parameters and weights (Jain et al. 2020).

We are not proposing a new role for experts in policy-making and management. Rather we suggest that local expert knowledge be integrated in a more rigorous and robust way. Policymakers and managers are making decisions based on available information that is often filtered through informal information networks, especially trusted relationships and professional networks (Dickinson et al. 2015; Boag et al. 2018; Hertel-Fernandez et al. 2019). In the dynamic and dangerous environment of the Anthropocene, we cannot afford to dismiss knowledge or exclude stakeholders. For example, local expertise such as Indigenous knowledge remains insufficiently represented in scientific publications and fire management policies (Christianson 2015). Therefore, we invite those in positions of influence at any level to consider how to better share information and challenges.

## Conclusion

This study investigated the past and future changes in global fire regimes using expert assessment. We identified the main drivers of fire regime change during the Holocene and explored the potential trajectories and impacts of future fire regimes on different ecosystem services. Our findings aligned with other studies that fire regimes have experienced an increase in state changes, and that fire regimes are likely to degrade ecosystem services, particularly under higher greenhouse gas emissions scenarios. We caution that carbon sequestration policies should be carefully evaluated in light of the expected increase in fire activity for a warmer planet. Although our study primarily focuses on general global patterns, the results offer a foundation for hypothesis testing in future research at smaller scales. By integrating our findings with other studies exploring aspects such as the likelihood of fire regime changes and their effects, we can gather more detailed information to address regional-specific needs.

Synthesis activities that focus on addressing decision-making needs are vital, bridging the gap between science and policy. Governments should implement systematic approaches to involve larger groups of experts in decision-making processes promptly and efficiently,

encouraging participation from diverse backgrounds, including the scientific community, local managers, and traditional knowledge holders and practitioners. Given the complexity and multi-factor nature of fires, we propose conducting similar expert assessment activities involving fire and land managers and other types of expertise. These endeavors will provide new insights and perspectives on pressing issues related to fire.

## Supplementary Information

The online version contains supplementary material available at <https://doi.org/10.1186/s42408-023-00237-9>.

**Additional file 1.**

**Additional file 2.**

## Acknowledgements

This study emerged during the PAGES-supported Global Paleofire Working Group 2 workshop "Fire history baselines by biome" held in September 2016 at Château de la Tour, Beguey (Bordeaux, France) led by A.-L. D. and Tim Brücher. We thank Virginia Iglesias and Elizabeth Lynch for participating in this study. We thank Isabella Errigo for her assistance in generating Fig. 1a. We dedicate this manuscript to our late colleague Dr. Daniele Colombaroli.

## Authors' contributions

BWA and ALD conceived the study. ALD and BWA secured funding for the project. SSS, BWA, BV, BL, DC, GGR, MS, JCA, OB, AF, CM and DR performed the initial literature review, designed the questionnaire, and generated the initial list of invitees. SSS managed expert invitations. AND, AK, ALD, AC, CT, CGA, CCR, CMM, CY, CU, CK, CC, CCM, CL, DC, DM, DH, DMG, DH, DHU, EC, ED, EB, EC, ER, EM, EUF, EJB, EMG, FXC, GBP, GGR, GM, HC, HS, IO, JM, JRS, JR, JM, JE, JALS, JMP, JA, JI, KAH, KM, KA, KB, KH, LB, LM, LS, MA, MG, MPL, MC, MH, MPG, MN, MC, MM, NP, NR, NL, NK, OB, PM, PK, PFH, PF, RG, RC, RH, RB, RV, RP, SYM, SOB, SM, SC, SB, SH, SGAF, TA, TL, TB, TA, TW, VC, VR, WF, WD, WTS, YR and YB responded to the questionnaire. SSS and BWA conducted the data analysis and wrote the manuscript with input from all co-authors.

## Funding

PAGES, Past Global Changes, is funded by the Swiss Academy of Sciences and the Chinese Academy of Sciences and supported in kind by the University of Bern, Switzerland. Financial support was provided by the U.S. National Science Foundation award numbers 1916565, EAR-2011439, and EAR-2012123. Additional support was provided by the Utah Department of Natural Resources Watershed Restoration Initiative. SSS was supported by Brigham Young University Graduate Studies. MS was supported by National Science Centre, Poland (grant no. 2018/31/B/ST10/02498 and 2021/41/B/ST10/00060). JCA was supported by the European Union's Horizon 2020 research and innovation program under the Marie Skłodowska-Curie grant agreement No 101026211. PF contributed within the framework of the FCT-funded project no. UIDB/04033/2020. SGAF acknowledges support from Trond Mohn Stiftelse (TMS) and University of Bergen for the startup grant 'TMS2022STG03'. JMP participation in this research was supported by the Forest Research Centre, a research unit funded by Fundação para a Ciência e a Tecnologia I.P. (FCT), Portugal (UIDB/00239/2020). A.-LD acknowledge PAGES, PICS CNRS 06484 project, CNRS-INSU, Région Nouvelle-Aquitaine, University of Bordeaux DRI and INQUA for workshop support.

## Availability of data and materials

The datasets used and/or analyzed during the current study are attached as supplementary data.

## Declarations

### Ethics approval and consent to participate

Not applicable.

**Consent for publication**

Not applicable.

**Competing interests**

The authors declare that they have no competing interests.

**Author details**

<sup>1</sup>Department of Plant and Wildlife Sciences, Brigham Young University, Provo, UT 84604, USA. <sup>2</sup>Chrono-Environnement, UMR 6249 CNRS, Université de Franche-Comté, Besançon, France. <sup>3</sup>MSHE, UAR 3124 CNRS, Université de Franche-Comté, Besançon, France. <sup>4</sup>Institute of Plant Sciences and Oeschger Centre for Climate Change Research, University of Bern, Altenbergrain 21, CH-3013 Bern, Switzerland. <sup>5</sup>Aix Marseille Univ, Avignon Univ, CNRS, IRD, IMBE, Aix-en-Provence, France. <sup>6</sup>Centre for Quaternary Research (CQR), Department of Geography, Royal Holloway University of London (RHUL), Egham, Surrey, UK. <sup>7</sup>Department of Ecology, Philipps-Marburg University, Marburg, Germany. <sup>8</sup>Department of Past Landscape Dynamics Laboratory, Institute of Geography and Spatial Organization, Polish Academy of Sciences, Warsaw, Poland. <sup>9</sup>Aix-Marseille Université, CNRS, IRD, INRAE, CEREGE, Aix-en-Provence 13545, France. <sup>10</sup>Département de Géographie, Université de Montréal, Montréal, Canada. <sup>11</sup>Department of Physical Geography, Goethe University, Altenhöferallee 1, 60438 Frankfurt Am Main, Germany. <sup>12</sup>STAR-UBB Institute Babeş-Bolyai University, Kogălniceanu 1, 400084 Cluj-Napoca-Napoca, România. <sup>13</sup>Natural Resources Canada, Canadian Forest Service, Edmonton, Canada. <sup>14</sup>Department of Earth, Environmental and Geographic Sciences, University of British Columbia, Kelowna, Canada. <sup>15</sup>Department of Forest Sciences, University of Eastern Finland, Joensuu, Finland. <sup>16</sup>Department of Archaeology, Turku Institute for Advanced Studies (TIAS), University of Turku, 20014 Turku, Finland. <sup>17</sup>Geography, Planning, and Spatial Sciences, University of Tasmania, Hobart, Australia. <sup>18</sup>School of Ecosystem and Forest Sciences, University of Melbourne, Richmond, Australia. <sup>19</sup>ARC Centre of Excellence for Australian Biodiversity and Heritage, University of New South Wales, Sydney, Australia. <sup>20</sup>Institute of Archaeology, ZRC SAZU, Ljubljana, Slovenia. <sup>21</sup>Institut de Recherche sur Les Forêts, Université du Québec en Abitibi-Témiscamingue, Rouyn-Noranda, QC J9X 5E4, Canada. <sup>22</sup>Département des Sciences Biologiques, Université du Québec à Montréal, Montréal, QC H2X 1Y4, Canada. <sup>23</sup>Department of Palynology and Climate Dynamics, Albrecht-Von-Haller Institute, University of Goettingen, Goettingen, Germany. <sup>24</sup>School of Environmental Sciences, University of Liverpool, Liverpool, UK. <sup>25</sup>ISEM, University of Montpellier, CNRS, IRD, EPHE, Montpellier, France. <sup>26</sup>Department of Geography & Planning, School of Environmental Sciences, University of Liverpool, Liverpool L69 7ZT, UK. <sup>27</sup>Department of Environmental Sciences, University of Basel, Basel, Switzerland. <sup>28</sup>Paul Scherrer Institute, Villigen, Switzerland. <sup>29</sup>Department of Geography, University of Oregon, Eugene, OR, USA. <sup>30</sup>ARC Centre of Excellence for Australian Biodiversity and Heritage, School of Earth and Atmospheric Sciences, University of Wollongong, Wollongong, NSW, Australia. <sup>31</sup>Department of Land, Environment, Agriculture and Forestry (TESAF), University of Padua, Padua, Italy. <sup>32</sup>ISEM, University of Montpellier, CNRS, IRD, Montpellier, France. <sup>33</sup>EPHE-PSL University, Paris, France. <sup>34</sup>UMR LEHNA, Université Claude Bernard Lyon, CNRS ENTPE, Villeurbanne, France. <sup>35</sup>Churchill College and Department of Plant Sciences, University of Cambridge, Cambridge, UK. <sup>36</sup>Los Alamos National Laboratory, Los Alamos, NM 87544, USA. <sup>37</sup>CEABN/InBio – Centre for Applied Ecology / Research Network in Biodiversity and Evolutionary Biology, School of Agriculture, University of Lisbon, Tapada da Ajuda, 1349-017 Lisbon, Portugal. <sup>38</sup>ARC Centre of Excellence for Australian Biodiversity and Heritage, Global Ecology, College of Science and Engineering, Flinders University, Adelaide, SA, Australia. <sup>39</sup>CIRAD, UMR Eco & Sols, CIRAD, INRAE, Institut Agro, IRD, University Montpellier, Montpellier, France. <sup>40</sup>Laurentian Forestry Centre, Canadian Forest Service, Natural Resources Canada, Quebec City, QC G1V 4C7, Canada. <sup>41</sup>Atlantic Forestry Centre, Canadian Forest Service, Natural Resources Canada, Fredericton, NB E3B 5P7, Canada. <sup>42</sup>Department of Earth and Environmental Sciences, Syracuse University, Syracuse, NY, USA. <sup>43</sup>Insubric Ecosystems Research Group, Swiss Federal Institute for Forest, Snow and Landscape Research WSL, A Ramél 18, CH-6593 Cadenazzo, Switzerland. <sup>44</sup>School of Culture, History & Language, and ARC Centre of Excellence for Australian Biodiversity and Heritage, Australian National University, Canberra ACT-2601, Australia. <sup>45</sup>School of Biological, Earth and Environmental Sciences, University of New South Wales, Sydney, Australia. <sup>46</sup>Geoeology, Department of Environmental Sciences, University of Basel, Klingelbergstrasse 27, 4056 Basel, Switzerland. <sup>47</sup>Center for Water Infrastructure and Sustainable Energy (WISE)

Futures, Nelson Mandela African Institution of Science & Technology, Nelson Mandela, Tengeru, P.O. Box 9124, Arusha, Tanzania. <sup>48</sup>Department of Environment and Geography, York Institute for Tropical Ecosystems, University of York, Wentworth Way, York YO10 5DD, UK. <sup>49</sup>School of Animal, Plant & Environmental Sciences, University of the Witwatersrand, Braamfontein 2000, South Africa. <sup>50</sup>Department of Geosciences, University of Massachusetts Amherst, Amherst, MA, USA. <sup>51</sup>CREAF, Cerdanyola del Vallès, Spain. <sup>52</sup>Polar Terrestrial Environmental Systems, Alfred Wegener Institute Helmholtz Center for Polar and Marine Research, Potsdam, Germany. <sup>53</sup>Institute of Geography, Georg-August-Universität Göttingen, Goldschmidtstr. 5, 37077 Göttingen, Germany. <sup>54</sup>Mediterranean Ecogeomorphological and Hydrological Connectivity Research Team, Department of Geography, Universitat de Les Illes Balears, Carretera de Valldemossa Km 7.5, 07122 Palma, Balearic Islands, Spain. <sup>55</sup>Institute of Agro-Environmental and Water Economy Research, INAGEA, Universitat de Les Illes Balears, Carretera de Valldemossa Km 7.5, 07122 Palma, Balearic Islands, Spain. <sup>56</sup>Centre for the Research and Technology of Agro-Environmental and Biological Sciences, University of Trás-Os-Montes e Alto Douro, Vila Real, Portugal. <sup>57</sup>Department of Biological Sciences, University of Bergen, PO Box 7803, 5020 Bergen, Norway. <sup>58</sup>Australian Bureau of Meteorology, Hobart, TAS, Australia. <sup>59</sup>Departamento de Geografía, Universidad de Chile e Institute of Ecology and Biodiversity (IEB), Santiago, Chile. <sup>60</sup>Department of Public Health, Brigham Young University, Provo, UT, USA. <sup>61</sup>Departamento de Ciencias Biológicas, Universidad de los Andes, Bogotá, Colombia. <sup>62</sup>Department of Geography, Environment, and Sustainability, Weber State University, Ogden, UT, USA. <sup>63</sup>Marine, Earth, and Atmospheric Sciences, North Carolina State University, Raleigh, NC 27695, USA. <sup>64</sup>Max Planck Institute for the Science of Human History, Jena, Germany. <sup>65</sup>Earth System Science Program, Faculty of Natural Sciences, Universidad del Rosario, Bogotá, Colombia. <sup>66</sup>School of the Environment, Geography and Geosciences, University of Portsmouth, Lion Terrace, Buckingham Building, Portsmouth PO1 3HE, UK. <sup>67</sup>School of Geography and Sustainable Development, Irvine Building, University of St Andrews, St Andrews, Scotland, UK. <sup>68</sup>Department of Forest and Conservation Sciences, University of British Columbia, Vancouver, BC, Canada. <sup>69</sup>Department of Geosciences, Osaka Metropolitan University, Osaka, Japan. <sup>70</sup>Department of Ecology and Evolutionary Biology, Yale00 University, New Haven, CT, USA. <sup>71</sup>School of Sustainability, Indian Institute of Technology Madras, Chennai, India. <sup>72</sup>Department of Geosciences and Geography, University of Helsinki, Helsinki, Finland. <sup>73</sup>Department of Biology and Centre for Forest Biology, University of Victoria, Victoria, BC, Canada. <sup>74</sup>Univ. Rennes 1, CNRS, ECOBIO UMR 6553, Rennes, France. <sup>75</sup>Department of Geography, University of Wisconsin Oshkosh, Oshkosh, WI, USA. <sup>76</sup>Environmental Archaeology Research Group, Institute of History, CSIC, Albasanz 26-28, 28037 Madrid, Spain. <sup>77</sup>Department of Geography and Environmental Sciences, Northumbria University Newcastle, Newcastle Upon Tyne, UK. <sup>78</sup>Swedish University of Agricultural Sciences, Uppsala, Sweden. <sup>79</sup>Forestry Science Institute (ICIFOR), INIA, CSIC, University Polytechnic of Madrid, Madrid, Spain. <sup>80</sup>Department of Archaeology, Max Planck Institute of Geoanthropology, Jena, Germany. <sup>81</sup>Climate Change Ecology Research Unit, Faculty of Geographical and Geological Sciences, Adam Mickiewicz University, Poznań, Poland. <sup>82</sup>School of Geography, University of Nottingham, Nottingham NG7 2, UK. <sup>83</sup>Department of Earth Sciences, Montana State University, Bozeman, MT 59717, USA. <sup>84</sup>Dept. of Earth & Planetary Sciences, University of New Mexico, Albuquerque, NM, USA. <sup>85</sup>Department of Earth, Environment and Life Sciences (DISTAV), University of Genoa, Genoa, Italy. <sup>86</sup>Geosciences Barcelona (GEO3BCN) CSIC, C/ Lluís Sole I Sabaris S/N, 08028 Barcelona, Spain. <sup>87</sup>School of Biological, Earth and Environmental Sciences, UNSW Sydney, Sydney, NSW, Australia. <sup>88</sup>Grupo de Ecología y Restauración Forestal, Departamento de Ciencias de La Vida, Facultad de Ciencias, Universidad de Alcalá, Alcalá de Henares, Spain. <sup>89</sup>Department of Geography, University of Utah, Salt Lake City, UT 84112, USA. <sup>90</sup>School of Earth and Environmental Sciences, The University of Queensland, Brisbane, QLD 4072, Australia. <sup>91</sup>Environmental Change Institute, School of Geography and the Environment, University of Oxford, Oxford OX130Y, UK. <sup>92</sup>Forest Research Centre, TERRA Associate Laboratory, School of Agriculture, University of Lisbon, Lisbon, Portugal. <sup>93</sup>Institute of Geology and Palaeontology, University of Münster, Münster, Germany. <sup>94</sup>CNR - Institute of Environmental Geology and Geoengineering, Lab. of Palynology and Palaeoecology, Piazza Della Scienza 1, Milan 20126, Italy. <sup>95</sup>ARC Centre of Excellence for Australian Biodiversity and Heritage, College of Arts, Society and Education, James Cook University, Cairns, Australia. <sup>96</sup>Institute of Geography, Augsburg University, Augsburg, Germany. <sup>97</sup>Institut Català de Paleocologia Humana i Evolució Social (IPHES-CERCA), Edifici W3, Campus Sescelades URV, Zona Educacional,

4, 43007 Tarragona, Spain. <sup>98</sup>Universitat Rovira I Virgili (URV), Av. Catalunya, 35, 43002 Tarragona, Spain. <sup>99</sup>Interdisciplinary Laboratory for Continental Environments, CNRS, University of Lorraine, Campus Bridoux, 8 Rue du Général Delestraint, 57070 Metz, France. <sup>100</sup>Department of Microbiology and Biogeochemistry, NIOZ Royal Netherlands Institute for Sea Research, P.O. Box 59, 1790 AB Den Burg, Texel, The Netherlands. <sup>101</sup>PaleoData Lab, Institute of Archaeology and Ethnography SB RAS, Novosibirsk, Russia. <sup>102</sup>Biological Institute, Tomsk State University, Tomsk, Russia. <sup>103</sup>Darwin Centre for Bushfire Research, Charles Darwin University, Darwin, NT, Australia. <sup>104</sup>Department of Palynology and Climate Dynamics, Georg-August-University of Göttingen, Wilhelm-Weber-Str. 2a, 37073 Göttingen, Germany. <sup>105</sup>Global Environment and Natural Resources Institute (GENRI), 4400 University Drive, Fairfax, VA 22030, USA. <sup>106</sup>Department of Geography and Geoinformation Science, George Mason University, 4400 University Drive, Fairfax, VA 22030, USA. <sup>107</sup>Division of Ecology, Department of Biology, Hacettepe University, Beytepe, 06800 Ankara, Turkey. <sup>108</sup>Departments of Biology and Environmental Studies, St Olaf College, Northfield, MN 55057, USA. <sup>109</sup>Department of Systematic and Evolutionary Botany, University of Zurich, Zollikerstrasse 107, CH-8008 Zurich, Switzerland. <sup>110</sup>Herbario Vargas CUZ, Universidad Nacional de San Antonio Abad del Cusco, Av. de La Cultura 773, Cusco, Perú. <sup>111</sup>Faculty of Environment, Science and Economy, University of Exeter, Exeter, UK. <sup>112</sup>Department of Geosciences, Auburn University, Auburn, USA. <sup>113</sup>Faculty of Biological and Environmental Sciences, University of Helsinki, Helsinki, Finland. <sup>114</sup>Institute of Tibetan Plateau Research, Chinese Academy of Sciences, Beijing, China. <sup>115</sup>Chongqing University, Chongqing 400044, China. <sup>116</sup>Univ. Bordeaux, CNRS, Bordeaux INP, EPOC, UMR 5805, 33600 Pessac, France.

Received: 25 April 2023 Accepted: 20 November 2023  
Published online: 08 February 2024

## References

- Abatzoglou, J. T., D. S. Battisti, A. P. Williams, W. D. Hansen, B. J. Harvey, and C. A. Kolden. 2021. Projected increases in western US forest fire despite growing fuel constraints. *Communications Earth & Environment* 2(1): 1–8. <https://doi.org/10.1038/s43247-021-00299-0>.
- Abbott, B. W., J. B. Jones, E. A. G. Schuur, F. S. C. III, W. B. Bowden, M. S. Bret-Harte, H. E. Epstein, M. D. Flannigan, T. K. Harms, T. N. Hollingsworth, M. C. Mack, A. D. McGuire, S. M. Natali, A. V. Rocha, S. E. Tank, M. R. Turetsky, J. E. Vonk, K. P. Wickland, G. R. Aiken, H. D. Alexander, R. M. W. Amon, B. W. Benscoter, Y. Bergeron, K. Bishop, O. Blarquez, B. Bond-Lamberty, A. L. Breen, I. Buffam, Y. Cai, C. Carcaillet, S. K. Carey, J. M. Chen, H. Y. H. Chen, T. R. Christensen, L. W. Cooper, J. H. C. Cornelissen, W. J. de Groot, T. H. DeLuca, E. Dorrepaal, N. Fetcher, J. C. Finlay, B. C. Forbes, N. H. F. French, S. Gauthier, M. P. Girardin, S. J. Goetz, J. G. Goldammer, L. Gough, P. Grogan, L. Guo, P. E. Higuera, L. Hinzman, F. S. Hu, G. Hugelius, E. E. Jafarov, R. Jandt, J. F. Johnstone, J. Karlsson, E. S. Kasischke, G. Kattner, R. Kelly, F. Keuper, G. W. Kling, P. Kortelainen, J. Kouki, P. Kuhry, H. Laudon, I. Laurion, R. W. Macdonald, P. J. Mann, P. J. Martikainen, J. W. McClelland, U. Molau, S. F. Oberbauer, D. Olefeldt, D. Paré, M. A. Parisien, S. Payette, C. Peng, O. S. Pokrovsky, E. B. Rastetter, P. A. Raymond, M. K. Reynolds, G. Rein, J. F. Reynolds, M. Robards, B. M. Rogers, C. Schädel, K. Schaefer, I. K. Schmidt, A. Shvidenko, J. Sky, R. G. M. Spencer, G. Starr, R. G. Striegl, R. Teisserenc, L. J. Tranvik, T. Virtanen, J. M. Welker, and S. Zimov. 2016. Biomass offsets little or none of permafrost carbon release from soils, streams, and wildfire: An expert assessment. *Environmental Research Letters* 11: <https://doi.org/10.1088/1748-9326/11/3/034014>.
- Abbott, B. W., K. Bishop, J. P. Zarnetske, C. Minaudo, F. S. Chapin, S. Krause, D. M. Hannah, L. Conner, D. Ellison, S. E. Godsey, S. Plont, J. Marçais, T. Kolbe, A. Huebner, R. J. Frei, T. Hampton, S. Gu, M. Buhman, S. S. Sayedi, O. Ursache, M. Chapin, K. D. Henderson, and G. Pinay. 2019. Human domination of the global water cycle absent from depictions and perceptions. *Nature Geoscience* 12(7): 553–540. <https://doi.org/10.1038/s41561-019-0374-y>.
- Abbott, B. W., A. V. Rocha, A. Shogren, J. P. Zarnetske, F. Iannucci, W. B. Bowden, S. P. Bratsman, L. Patch, R. Watts, R. Fulweber, R. J. Frei, A. M. Huebner, S. M. Ludwig, G. T. Carling, and J. A. O'Donnell. 2021. Tundra wildfire triggers sustained lateral nutrient loss in alaskan Arctic. *Global Change Biology* 27(7): 1408–1430. <https://doi.org/10.1111/gcb.15507>.
- Abbott, B. W., M. Brown, J. C. Carey, J. Ernakovich, J. M. Frederick, L. Guo, G. Hugelius, R. M. Lee, M. M. Loranty, R. Macdonald, P. J. Mann, S. M. Natali, D. Olefeldt, P. Pearson, A. Rec, M. Robards, V. G. Salmon, S. S. Sayedi, C. Schädel, E. A. G. Schuur, S. Shakil, A. J. Shogren, J. Strauss, S. E. Tank, B. F. Thornton, R. Treharne, M. Turetsky, C. Voigt, N. Wright, Y. Yang, J. P. Zarnetske, Q. Zhang, and S. Zolkos. 2022. We must stop fossil fuel emissions to protect permafrost ecosystems. *Frontiers in Environmental Science* 10: 889428. <https://doi.org/10.3389/fenvs.2022.889428>.
- Andela, N., and G. R. van der Werf. 2014. Recent trends in African fires driven by cropland expansion and El Niño to La Niña transition. *Nature Climate Change* 4(9): 791–795. <https://doi.org/10.1038/nclimate2313>.
- Andela, N., D. C. Morton, L. Giglio, Y. Chen, G. R. van der Werf, P. S. Kasibhatla, R. S. DeFries, G. J. Collatz, S. Hantson, S. Kloster, D. Bachelet, M. Forrest, G. Lasslop, F. Li, S. Mangeon, J. R. Melton, C. Yue, and J. T. Randerson. 2017. A human-driven decline in global burned area. *Science* 356(6345): 1356–1362. <https://doi.org/10.1126/science.aal4108>.
- Anderegg, W. R., A. T. Trugman, G. Badgley, C. M. Anderson, A. Bartuska, P. Ciais, D. Cullenward, C. B. Field, J. Freeman, and S. J. Goetz. 2020. Climate-driven risks to the climate mitigation potential of forests. *Science* 368(6497). <https://doi.org/10.1126/science.aaz7005>.
- Archibald, S., A. C. Staver, and S. A. Levin. 2012. Evolution of human-driven fire regimes in Africa. *Proceedings of the National Academy of Sciences* 109(3): 847–852. <https://doi.org/10.1073/pnas.1118648109>.
- Armstrong-McKay, D. I., A. Staal, J. F. Abrams, R. Winkelmann, B. Sakschewski, S. Loriani, I. Fetzer, S. E. Cornell, J. Rockström, and T. M. Lenton. 2022. Exceeding 1.5°C global warming could trigger multiple climate tipping points. *Science* 377(6611): eabn7950. <https://doi.org/10.1126/science.abn7950>.
- Aubry-Wake, C., A. Bertoni, and J. W. Pomeroy. 2022. Fire and ice: the impact of wildfire-affected albedo and irradiance on glacier melt. *Earth's Future* 10(4): e2022EF002685. <https://doi.org/10.1029/2022EF002685>.
- Baker, B. C., and C. T. Hanson. 2022. Cumulative tree mortality from commercial thinning and a large wildfire in the Sierra Nevada, California. *Land* 11(7): 995. <https://doi.org/10.3390/land11070995>.
- Balch, J. K., B. A. Bradley, J. T. Abatzoglou, R. C. Nagy, E. J. Fusco, and A. L. Mahood. 2017. Human-started wildfires expand the fire niche across the United States. *Proceedings of the National Academy of Sciences* 114(11): 2946–51. <https://doi.org/10.1073/pnas.1617394114>.
- Balch, J. K., V. Iglesias, A. E. Braswell, M. W. Rossi, M. B. Joseph, A. L. Mahood, T. R. Shrum, C. T. White, V. M. Scholl, B. McGuire, C. Karban, M. Buckland, and W. R. Travis. 2020. Social-environmental extremes: rethinking extraordinary events as outcomes of interacting biophysical and social systems. *Earth's Future* 8(7) <https://doi.org/10.1029/2019EF001319>. e2019EF001319.
- Bamber, J. L., and W. P. Aspinall. 2013. An expert judgement assessment of future sea level rise from the ice sheets. *Nature Climate Change* 3(4): 424–427. <https://doi.org/10.1038/nclimate1778>.
- Barredo, J., C. Brailescu, A. Teller, F. Sabatini, A. Mauri, and K. Janouskova. 2021. *Mapping and assessment of primary and old-growth forests in Europe*. Publications Office of the European Union. <https://doi.org/10.2760/797591>. LU.
- Bentley, P. D., and T. D. Penman. 2017. Is there an inherent conflict in managing fire for people and conservation? *International Journal of Wildland Fire* 26(6): 455–468. <https://doi.org/10.1071/WF16150>.
- Bergeron, Y., D. Cyr, M. P. Girardin, and C. Carcaillet. 2010. Will climate change drive 21st century burn rates in Canadian boreal forest outside of its natural variability: collating global climate model experiments with sedimentary charcoal data. *International Journal of Wildland Fire* 19(8): 1127–1139. <https://doi.org/10.1071/WF09092>.
- Bishop, T. B. B., R. A. Gill, B. R. McMillan, and S. B. St. Clair. 2020. Fire, rodent herbivory, and plant competition: implications for invasion and altered fire regimes in the Mojave Desert. *Oecologia* 192(1): 155–167. <https://doi.org/10.1007/s00442-019-04562-2>.
- Boag, A. E., J. Hartter, L. C. Hamilton, N. D. Christoffersen, F. R. Stevens, M. W. Palace, and M. J. Ducey. 2018. Climate change beliefs and forest management in eastern Oregon: implications for individual adaptive capacity. *Ecology and Society* 23(4): art1. <https://doi.org/10.5751/ES-10355-230401>.
- Bond, W. J., F. I. Woodward, and G. F. Midgley. 2005. The global distribution of ecosystems in a world without fire. *New Phytologist* 165(2): 525–538. <https://doi.org/10.1111/j.1469-8137.2004.01252.x>.



- Bova, S., Y. Rosenthal, Z. Liu, S. P. Godad, and M. Yan. 2021. Seasonal origin of the thermal maxima at the Holocene and the last interglacial. *Nature* 589(7843): 548–553. <https://doi.org/10.1038/s41586-020-03155-x>.
- Bowman, D. M. J. S., and J. J. Sharples. 2023. Taming the flame, from local to global extreme wildfires. *Science* 26: 616–619. <https://doi.org/10.1126/science.adf8066>.
- Bowman, D. M. J. S., J. K. Balch, P. Artaxo, W. J. Bond, J. M. Carlson, M. A. Cochrane, C. M. D'Antonio, R. S. DeFries, J. C. Doyle, S. P. Harrison, F. H. Johnston, J. E. Keeley, M. A. Krawchuk, C. A. Kull, J. B. Marston, M. A. Moritz, I. C. Prentice, C. I. Roos, A. C. Scott, T. W. Swetnam, G. R. van der Werf, and S. J. Pyne. 2009. Fire in the Earth system. *Science* 324(5926): 481–484. <https://doi.org/10.1126/science.1163886>.
- Bowman, D. M. J. S., J. Balch, P. Artaxo, W. J. Bond, M. A. Cochrane, C. M. D'Antonio, R. DeFries, F. H. Johnston, J. E. Keeley, M. A. Krawchuk, C. A. Kull, M. Mack, M. A. Moritz, S. Pyne, C. I. Roos, A. C. Scott, N. S. Sodhi, and T. W. Swetnam. 2011. The human dimension of fire regimes on Earth. *Journal of Biogeography* 38(12): 2223–2236. <https://doi.org/10.1111/j.1365-2699.2011.02595.x>.
- Bowman, D. M. J. S., G. J. Williamson, J. T. Abatzoglou, C. A. Kolden, M. A. Cochrane, and A. M. S. Smith. 2017. Human exposure and sensitivity to globally extreme wildfire events. *Nature Ecology & Evolution* 1(3): 1–6. <https://doi.org/10.1038/s41559-016-0058>.
- Bowman, D. M. J. S., C. A. Kolden, J. T. Abatzoglou, F. H. Johnston, G. R. van der Werf, and M. Flannigan. 2020. Vegetation fires in the Anthropocene. *Nature Reviews Earth & Environment* 1(10): 500–515. <https://doi.org/10.1038/s43017-020-0085-3>.
- Bradstock, R. A., J. E. Williams, and M. A. Gill. 2002. Flammable Australia: the fire regimes and biodiversity of a continent. *Cambridge University Press*.
- Breyer, C., D. Keiner, B. W. Abbott, J. L. Bamber, F. Creutzig, C. Gerhards, A. Mühlbauer, G. F. Nemet, and Ö. Terli. 2023. Proposing a 1.0°C climate target for a safer future. *PLOS Climate* 2(6): e0000234. <https://doi.org/10.1371/journal.pclm.0000234>.
- Burke, K. D., J. W. Williams, S. Brewer, W. Finsinger, T. Giesecke, D. J. Lorenz, and A. Ordóñez. 2019. Differing climatic mechanisms control transient and accumulated vegetation novelty in Europe and eastern north America. *Philosophical Transactions of the Royal Society B: Biological Sciences* 374(1788): 20190218. <https://doi.org/10.1098/rstb.2019.0218>.
- Burke, M., A. Driscoll, S. Heft-Neal, J. Xue, J. Burney, and M. Wara. 2021. The changing risk and burden of wildfire in the United States. *Proceedings of the National Academy of Sciences* 118 (2): e2011048118. <https://doi.org/10.1073/pnas.2011048118>.
- Burton, C., S. Lampe, D. Kelley, W. Thiery, S. Hantson, N. Christidis, L. Gudmundsson, M. Forrest, E. Burke, J. Chang, H. Huang, A. Ito, S. Kou-Giesbrecht, G. Lasslop, W. Li, L. Nieradzik, F. Li, Y. Chen, J. Randerson, C. Reyer, and M. Mengel. 2023. Global burned area increasingly explained by climate change. Research Square, preprint <https://doi.org/10.21203/rs.3.rs-3168150/v1>.
- Bytnerowicz, A., Y. M. Hsu, K. Percy, A. Legge, M. E. Fenn, S. Schilling, W. Frączek, and D. Alexander. 2016. Ground-level air pollution changes during a boreal wildland mega-fire. *Science of the Total Environment* 572: 755–769. <https://doi.org/10.1016/j.scitotenv.2016.07.052>.
- Canadell, J. G., C. P. M. Meyer, G. D. Cook, A. Dowdy, P. R. Briggs, J. Knauer, A. Pepler, and V. Haverd. 2021. Multi-decadal increase of forest burned area in Australia is linked to climate change. *Nature Communications* 12(1): 6921. <https://doi.org/10.1038/s41467-021-27225-4>.
- Carcaillet, C., P. J. H. Richard, Y. Bergeron, B. Fréchet, and A. A. Ali. 2010. Resilience of the boreal forest in response to Holocene fire-frequency changes assessed by pollen diversity and population dynamics. *International Journal of Wildland Fire* 19(8): 1026–1039.
- Carcaillet, C., M. Despons, V. Robin, and Y. Bergeron. 2020. Long-term steady-state dry boreal forest in the face of disturbance. *Ecosystems* 23(5): 1075–1092. <https://doi.org/10.1007/s10021-019-00455-w>.
- Cassidy, L., J. S. Perkins, and J. Bradley. 2022. Too much, too late: Fires and reactive wildfire management in northern Botswana's forests and woodland savannas. *African Journal of Range & Forage Science* 39(1): 160–174. <https://doi.org/10.2989/10220119.2022.2033833>.
- Chapin, F. S., E. U. Weber, E. M. Bennett, R. Biggs, J. van den Bergh, W. N. Adger, A. S. Crépin, S. Polasky, C. Folke, M. Scheffer, K. Segerson, J. M. Anderies, S. Barrett, J. C. Cardenas, S. R. Carpenter, J. Fischer, N. Kautsky, A. Levin, J. F. Shogren, B. Walker, and J. Wilen. 2022. and A. de Zeeuw. Earth stewardship: Shaping a sustainable future through interacting policy and norm shifts. *Ambio* 51: 1907–1920. <https://doi.org/10.1007/s13280-022-01721-3>.
- Chavardès, R. D., V. Danneyrolles, J. Portier, M. P. Girardin, D. M. Gaboriau, S. Gauthier, I. Drobyshev, D. Cyr, T. Wallenius, and Y. Bergeron. 2022. Converging and diverging burn rates in north American boreal forests from the little ice age to the present. *International Journal of Wildland Fire* 31(12): 1184–1193. <https://doi.org/10.1071/WF22090>.
- Chen, Y., D. M. Romps, J. T. Seeley, S. Veraverbeke, W. J. Riley, Z. A. Mekonnen, and J. T. Randerson. 2021a. Future increases in Arctic lightning and fire risk for permafrost carbon. *Nature Climate Change* 11: 404–410. <https://doi.org/10.1038/s41558-021-01011-y>.
- Chen, G., Y. Guo, X. Yue, S. Tong, A. Gasparrini, M. L. Bell, B. Armstrong, J. Schwartz, J. J. K. Jaakkola, A. Zanobetti, E. Lavigne, P. H. Nascimento Saldiva, H. Kan, D. Royé, A. Milojevic, A. Overcenco, A. Urban, A. Schneider, A. Entezari, A. M. Vicedo-Cabrera, A. Zeka, A. Tobias, B. Nunes, B. Alahmad, B. Forsberg, S. C. Pan, C. Íñiguez, C. Ameling, C. Åström, D. Houthuijs, D. Van Dung, E. Samoli, F. Mayvaneh, F. Sera, G. Carrasco-Escobar, Y. Lei, H. Orru, H. Kim, I. H. Holobaca, J. Kyselý, J. P. Teixeira, J. Madureira, K. Katsouyanni, M. Hurtado-Díaz, M. Maasikmets, M. S. Ragetelli, M. Hashizume, M. Stafoggia, M. Pascal, M. Scortichini, M. S. Z. S. Coelho, N. Valdés Ortega, N.R.I., N. Ryt, P. Scovronick, P. Matus, R. M. Goodman, R. Garland, S. O. Abrutzky, S. Garcia, S. Rao, T. N. Fratiani, V. Dang, V. Colistro, W. Huber, X. Lee, Y. Seposo, Y. L. Honda, T. Guo, W. Ye, M. J. Yu, J. M. Abramson, and Samet. 2021b. and S.Li. Mortality risk attributable to wildfire-related PM2.5 pollution: A global time series study in 749 locations. *The Lancet Planetary Health* 5(9): e579–87. [https://doi.org/10.1016/S2542-5196\(21\)00200-X](https://doi.org/10.1016/S2542-5196(21)00200-X).
- Christianson, A. 2015. Social science research on indigenous wildfire management in the 21st century and future research needs. *International Journal of Wildland Fire* 24(2): 190–200. <https://doi.org/10.1071/WF13048>.
- Cochrane, M. A., and D. M. J. S. Bowman. 2021. Manage fire regimes, not fires. *Nature Geoscience* 14(7): 455–457. <https://doi.org/10.1038/s41561-021-00791-4>.
- Collins, L., R. A. Bradstock, H. Clarke, M. F. Clarke, R. H. Nolan, and T. D. Penman. 2021. The 2019/2020 mega-fires exposed Australian ecosystems to an unprecedented extent of high-severity fire. *Environmental Research Letters* 16(4): 044029. <https://doi.org/10.1088/1748-9326/abeb9e>.
- Cook, B. I., J. E. Smerdon, E. R. Cook, A. P. Williams, K. J. Anchukaitis, J. S. Mankin, K. Allen, L. Andreu-Hayles, T. R. Ault, S. Belmecheri, S. Coats, B. Coulthard, B. Fosu, P. Grierson, D. Griffin, D. A. Herrera, M. Ionita, F. Lehner, C. Leland, K. Marvel, M. S. Morales, V. Mishra, J. Ngoma, H. T. T. Nguyen, A. O'Donnell, J. Palmer, M. P. Rao, M. Rodriguez-Caton, R. Seager, D. W. Stahle, S. Stevenson, U. K. Thapa, A. M. Varuolo-Clarke, and E. K. Wise. 2022. Mega-droughts in the common era and the Anthropocene. *Nature Reviews Earth & Environment* 3: 741–757. <https://doi.org/10.1038/s43017-022-00329-1>.
- Crandall, T., E. Jones, M. Greenhalgh, R. J. Frei, N. Griffin, E. Severe, J. Maxwell, L. Patch, S. I. St Clair, S. Bratsman, M. Merritt, A. J. Norris, G. T. Carling, N. Hansen, S. B. St. Clair, and B. W. Abbott. 2021. Megafire affects stream sediment flux and dissolved organic matter reactivity, but land use dominates nutrient dynamics in semiarid watersheds. *PLOS ONE* 16(9): e0257733. <https://doi.org/10.1371/journal.pone.0257733>.
- Cyr, D., S. Gauthier, Y. Bergeron, and C. Carcaillet. 2009. Forest management is driving the eastern north American boreal forest outside its natural range of variability. *Frontiers in Ecology and the Environment* 7(10): 519–524. <https://doi.org/10.1890/080088>.
- Dahl, K. A., J. T. Abatzoglou, C. A. Phillips, J. P. Ortiz-Partida, R. Licker, L. D. Merner, and B. Ekwurzel. 2023. Quantifying the contribution of major carbon producers to increases in vapor pressure deficit and burned area in western US and southwestern Canadian forests. *Environmental Research Letters* 18(6): 064011. <https://doi.org/10.1088/1748-9326/acbce8>.
- Dale, L. A., and K. Barrett. 2023. Missing the mark: effectiveness and funding in community wildfire risk reduction. Report. *Columbia University Libraries*. <https://doi.org/10.7916/tsrx-r694>.
- Daniau, A., M. F. Sánchez Goñi, P. Martinez, D. H. Urrego, V. Bout-Roumazielles, S. Desprat, and J. R. Marlon. 2013. Orbital-scale climate forcing of grassland burning in southern Africa. *Proceedings of the National Academy of Sciences* 110 (13): 5069–5073. <https://doi.org/10.1073/pnas.1214292110>.
- Davis, C. 2021. Earth, fuel and fire. *Nature Reviews Earth & Environment* 2(11): 742–742. <https://doi.org/10.1038/s43017-021-00239-8>.



- Deb, J. C., S. Phinn, N. Butt, and C. A. McAlpine. 2018. Climate change impacts on tropical forests: identifying risks for tropical Asia. *Journal of Tropical Forest Science* 30(2): 182–194.
- Dickinson, K., H. Brenkert-Smith, P. Champ, and N. Flores. 2015. Catching fire? Social interactions, beliefs, and wildfire risk mitigation behaviors. *Society & Natural Resources* 28(8): 807–824. <https://doi.org/10.1080/08941920.2015.1037034>.
- Doerr, S. H., and C. Santín. 2016. Global trends in wildfire and its impacts: perceptions versus realities in a changing world. *Philosophical Transactions of the Royal Society B: Biological Sciences* 371(1696): 20150345. <https://doi.org/10.1098/rstb.2015.0345>.
- Driscoll, D. A., M. Bode, R. A. Bradstock, D. A. Keith, T. D. Penman, and O. F. Price. 2016. Resolving future fire management conflicts using multi-criteria decision making. *Conservation Biology* 30(1): 196–205. <https://doi.org/10.1111/cobi.12580>.
- Dupuy, J., H. Fargeon, N. Martin-StPaul, F. Pimont, J. Ruffault, M. Guijarro, C. Hernandez, J. Madrigal, and P. Fernandes. 2020. Climate change impact on future wildfire danger and activity in southern Europe: a review. *Annals of Forest Science* 77(2): 35. <https://doi.org/10.1007/s13595-020-00933-5>.
- Ellis, E. C., N. Gauthier, K. K. Goldewijk, R. B. Bird, N. Boivin, S. Díaz, D. Q. Fuller, J. L. Gill, J. O. Kaplan, N. Kingston, H. Locke, C. N. H. McMichael, D. Ranco, T. C. Rick, M. R. Shaw, L. Stephens, J. C. Svenning, and J. E. M. Watson. 2021. People have shaped most of terrestrial nature for at least 12,000 years. *Proceedings of the National Academy of Sciences* 118(17): e2023483118.
- Ellis, T. M., D. M. J. S. Bowman, P. Jain, M. D. Flannigan, and G. J. Williamson. 2022. Global increase in wildfire risk due to climate-driven declines in fuel moisture. *Global Change Biology* 28(4): 1544–1559. <https://doi.org/10.1111/gcb.16006>.
- Errigo, I. M., B. W. Abbott, D. L. Mendoza, L. Mitchell, S. S. Sayedi, J. Glenn, K. E. Kelly, J. D. Beard, S. Bratsman, T. Carter, R. A. Chaney, A. Follett, A. Freeman, R. J. Frei, M. Greenhalgh, H. A. Holmes, P. D. Howe, J. D. Johnston, L. Lange, R. Martin, A. Stacey, T. Tran, and D. Wilson. 2020. Human health and economic costs of air pollution in Utah: an expert assessment. *Atmosphere* 11(11): 1238. <https://doi.org/10.3390/atmos11111238>.
- Feng, X., C. Merow, Z. Liu, D. S. Park, P. R. Roehrdanz, B. Maitner, E. A. Newman, B. L. Boyle, A. Lien, J. R. Burger, M. M. Pires, P. M. Brando, M. B. Bush, C. N. H. McMichael, D. M. Neves, E. I. Nikolopoulos, S. R. Saleska, L. Hannah, D. D. Breshears, T. P. Evans, J. R. Soto, K. C. Ernst, and B. J. Enquist. 2021. How deregulation, drought and increasing fire impact amazonian biodiversity. *Nature* 597(7877): 516–521. <https://doi.org/10.1038/s41586-021-03876-7>.
- Feurdean, A., B. Vanniere, W. Finsinger, D. Warren, S. C. Connor, M. Forrester, J. Liakka, A. Panait, C. Werner, M. Andric, P. Bobek, V. A. Carter, B. Davis, A. C. Diaconu, E. Dietze, I. Feeser, G. Florescu, M. Galka, T. Giesecke, S. Johns, E. Jamrichova, K. Kajukalo, J. Kaplan, M. Karpinska-Kolaczek, P. Kolaczek, P. Kunes, D. Kupriyanov, M. Lamentowicz, C. Lemmen, E. K. Magyari, K. Marcisz, E. Marinova, A. Niamir, E. Novenko, M. Obremska, A. Pedziszevska, M. Pfeiffer, A. Poska, M. Roesch, M. Slowinski, M. Stancikaite, M. Szal, J. Swieta-Musznicka, I. Tantau, M. Theuerkauf, S. Tonkov, O. Valko, J. Vassiljev, S. Veski, I. Vincze, A. Wacnik, J. Wiethold, and T. Hickler. 2020. Fire hazard modulation by long-term dynamics in land cover and dominant forest type in eastern and central Europe. *Biogeosciences* 17(4): 1213–1230. <https://doi.org/10.5194/bg-17-1213-2020>.
- Finsinger, W., T. Giesecke, S. Brewer, and M. Leydet. 2017. Emergence patterns of novelty in European vegetation assemblages over the past 15 000 years. *Ecology Letters* 20(3): 336–346. <https://doi.org/10.1111/ele.12731>.
- Flannigan, M., A. S. Cantin, W. J. de Groot, M. Wotton, A. Newbery, and L. M. Gowman. 2013. Global wildland fire season severity in the 21st century. *Forest Ecology and Management* 294: 54–61. <https://doi.org/10.1016/j.foreco.2012.10.022>.
- Fletcher, M., A. Romano, S. Connor, M. Mariani, and S. Yoshi Maezumi. 2021. Catastrophic bushfires, indigenous fire knowledge and reframing science in southeast Australia. *Fire* 4(3): 61. <https://doi.org/10.3390/fire4030061>.
- Führer, E. 2000. Forest functions, ecosystem stability and management. *Forest Ecology and Management* 132(1): 29–38. [https://doi.org/10.1016/S0378-1127\(00\)00377-7](https://doi.org/10.1016/S0378-1127(00)00377-7).
- Gauthier, S., M.-A. Vaillancourt, A. Leduc, L. De Grandpré, D. Kneeshaw, H. Morin, P. Drapeau, and Y. Bergeron. 2009. Ecosystem management in the boreal forest. *Presses de l'Université du Québec* 604p. <http://cfs.nrcan.gc.ca/publications?id=31060>.
- Girardin, M. P., A. A. Ali, C. Carcaillet, O. Blarquez, C. Hély, A. Terrier, A. Genries, and Y. Bergeron. 2013. Vegetation limits the impact of a warm climate on boreal wildfires. *New Phytologist* 199(4): 1001–1011. <https://doi.org/10.1111/nph.12322>.
- Glasspool, I. J., D. Edwards, and L. Axe. 2004. Charcoal in the silurian as evidence for the earliest wildfire. *Geology* 32(5): 381. <https://doi.org/10.1130/G20363.1>.
- Hagmann, R. K., P. F. Hessburg, S. J. Prichard, N. A. Povak, P. M. Brown, P. Z. Fulé, R. E. Keane, E. E. Knapp, J. M. Lydersen, K. L. Metlen, M. J. Reilly, A. J. Sánchez Meador, S. L. Stephens, J. T. Stevens, A. H. Taylor, L. L. Yocom, M. A. Battaglia, D. J. Churchill, L. D. Daniels, D. A. Falk, P. Henson, J. D. Johnston, M. A. Krawchuk, C. R. Levine, G. W. Meigs, A. G. Merschel, M. P. North, H. D. Safford, T. W. Swetnam, and A. E. M. Waltz. 2021. Evidence for widespread changes in the structure, composition, and fire regimes of western north American forests. *Ecological Applications* 31(8): e02431. <https://doi.org/10.1002/eap.2431>.
- Halofsky, J. E., D. L. Peterson, and B. J. Harvey. 2020. Changing wildfire, changing forests: the effects of climate change on Fire regimes and vegetation in the Pacific northwest, USA. *Fire Ecology* 16(1): 4. <https://doi.org/10.1186/s42408-019-0062-8>.
- Hammond, W. M., A. P. Williams, J. T. Abatzoglou, H. D. Adams, T. Klein, R. López, C. Sáenz-Romero, H. Hartmann, D. D. Breshears, and C. D. Allen. 2022. Global field observations of tree die-off reveal hotter-drought fingerprint for Earth's forests. *Nature Communications* 13(1): 1761. <https://doi.org/10.1038/s41467-022-29289-2>.
- Hampton, T. B., S. Lin, and N. B. Basu. 2022. Forest fire effects on stream water quality at continental scales: a meta-analysis. *Environmental Research Letters* 17(6): 064003. <https://doi.org/10.1088/1748-9326/ac6a6c>.
- Hantson, S., S. Pueyo, and E. Chuvieco. 2015. Global fire size distribution is driven by human impact and climate. *Global Ecology and Biogeography* 24(1): 77–86. <https://doi.org/10.1111/geb.12246>.
- Hantson, S., A. Armeth, S. P. Harrison, D. I. Kelley, I. C. Prentice, S. S. Rabin, S. Archibald, F. Mouillot, S. R. Arnold, P. Artaxo, D. Bachelet, P. Ciais, M. Forrest, P. Friedlingstein, T. Hickler, J. O. Kaplan, S. Kloster, W. Knorr, G. Lasslop, F. Li, S. Mangeon, J. R. Melton, A. Meyn, S. Sitch, A. Spessa, G. R. van der Werf, A. Voulgarakis, and C. Yue. 2016. The status and challenge of global fire modelling. *Biogeosciences* 13(11): 3359–3375. <https://doi.org/10.5194/bg-13-3359-2016>.
- Harris, R. M. B., T. A. Remenyi, G. J. Williamson, N. L. Bindoff, and D. M. J. S. Bowman. 2016. Climate–vegetation–Fire interactions and feedbacks: trivial detail or major barrier to projecting the future of the Earth system? *WIREs Climate Change* 7(6): 910–931. <https://doi.org/10.1002/wcc.428>.
- Hennebelle, A., P. Grondin, J. C. Aleman, A. A. Ali, Y. Bergeron, D. Borcard, and O. Blarquez. 2018. Using paleoecology to improve reference conditions for ecosystem-based management in western spruce-moss subdomain of Québec. *Forest Ecology and Management* 430(December): 157–165. <https://doi.org/10.1016/j.foreco.2018.08.007>.
- Hertel-Fernandez, A. I., M. Mildenerberger, and L. C. Stokes. 2019. Legislative staff and representation in congress. *American Political Science Review* 113(1): 1–18. <https://doi.org/10.1017/S0003055418000606>.
- Hoffman, K. M., E. L. Davis, S. B. Wickham, K. Schang, A. Johnson, T. Larking, P. N. Lauriault, N. Quynh Le, E. Swerdfager, and A. J. Trant. 2021. Conservation of Earth's biodiversity is embedded in indigenous fire stewardship. *Proceedings of the National Academy of Sciences of the United States of America* 118(32): e2105073118. <https://doi.org/10.1073/pnas.2105073118>.
- IPCC. 2021. *Climate change 2021: the physical science basis*, eds. V., P. Zhai, A. Pirani, S. L. Connors, C. Péan, S. Berger, N. Caud, Y. Chen, L. Goldfarb, M. I. Gomis, M. Huang, K. Leitzell, E. Lonnoy, J.B.R. Matthews, T. K. Maycock, T. Waterfield, O. Yelekçi, R. Yu, and B. Zhou. 2391. Cambridge, United Kingdom and New York, NY, USA: Cambridge University Press. <https://doi.org/10.1017/9781009157896>. Contribution of working group I to the sixth assessment report of the intergovernmental panel on climate change [Masson-Delmotte.
- Jain, P., S. C. P. Coogan, S. Ganapathi Subramanian, M. Crowley, S. Taylor, and M. D. Flannigan. 2020. A review of machine learning applications in wildfire science and management. *Environmental Reviews* 28(4): 478–505. <https://doi.org/10.1139/er-2020-0019>.
- Johnston, F. H., N. Borchers-Arriagada, G. G. Morgan, B. Jalaludin, A. J. Palmer, G. J. Williamson, and D. M. J. S. Bowman. 2021. Unprecedented health costs of smoke-related PM2.5 from the 2019–20 Australian megafires. *Nature Sustainability* 4(1): 42–47. <https://doi.org/10.1038/s41893-020-00610-5>.

- Jones, B. 2017. Are we underestimating the economic costs of wildfire smoke? An investigation using the life satisfaction approach. *Journal of Forest Economics* 27: 80–90. <https://doi.org/10.1016/j.jfe.2017.03.004>.
- Kelley, D. I., I. Bistinas, R. Whitley, C. Burton, T. R. Matthews, and N. Dong. 2019. How contemporary bioclimatic and human controls change global fire regimes. *Nature Climate Change* 9(9): 690–696. <https://doi.org/10.1038/s41558-019-0540-7>.
- Kelly, L. T., K. M. Giljohann, A. Duane, N. Aquilué, S. Archibald, E. Batllori, A. F. Bennett, S. T. Buckland, Q. Canelles, M. F. Clarke, M. J. Fortin, V. Hermoso, S. Herrando, R. E. Keane, F. K. Lake, M. A. McCarthy, A. Morán-Ordóñez, C. L. Parr, J. G. Pausas, T. D. Penman, A. Regos, L. Rumpff, J. L. Santos, A. L. Smith, A. D. Syphard, M. W. Tingley, and L. Brotons. 2020. Fire and biodiversity in the Anthropocene. *Science* 370(6519): eabb0355. <https://doi.org/10.1126/science.abb0355>.
- Lasslop, G., A. I. Coppola, A. Vougarakis, C. Yue, and S. Veraverbeke. 2019. Influence of fire on the carbon cycle and climate. *Current Climate Change Reports* 5(2): 112–123. <https://doi.org/10.1007/s40641-019-00128-9>.
- Lestienne, M., I. Jouffroy-Bapicot, D. Leyssenne, P. Sabatier, M. Debret, P. Albertini, D. Colombaroli, J. Didier, C. Hély, and B. Vannié. 2020. Fires and human activities as key factors in the high diversity of corsican vegetation. *The Holocene* 30(2): 244–257. <https://doi.org/10.1177/0959683619883025>.
- Lindenmayer, D. B., M. L. Hunter, P. J. Burton, and P. Gibbons. 2009. Effects of logging on fire regimes in moist forests. *Conservation Letters* 2(6): 271–277. <https://doi.org/10.1111/j.1755-263X.2009.00080.x>.
- Lindenmayer, D. B., R. M. Kooyman, C. Taylor, M. Ward, and J. E. M. Watson. 2020. Recent Australian wildfires made worse by logging and associated forest management. *Nature Ecology & Evolution* 4(7): 898–900. <https://doi.org/10.1038/s41559-020-1195-5>.
- Loisel, J., A. V. Gallego-Sala, M. J. Amesbury, G. Magnost, G. Anshari, D. W. Beilman, J. C. Benavides, J. Blewett, P. Camill, D. J. Charman, S. Chawchai, A. Hedgpeth, T. Kleinen, A. Korhola, D. Large, C. A. Mansilla, J. Müller, S. van Bellen, J. B. West, Z. Yu, J. L. Bubier, M. Garneau, T. Moore, A. B. K. Sannel, S. Page, M. Väiranta, M. Bechtold, V. Brovkin, L. E. S. Cole, J. P. Chanton, T. R. Christensen, M. A. Davies, F. De Vleeschouwer, S. A. Finkelstein, S. Frolking, M. Galka, L. Gandois, N. Girkin, L. I. Harris, A. Heinemeyer, A. M. Hoyt, M. C. Jones, F. Joos, S. Juutinen, K. Kaiser, T. Lacourse, M. Lamentowicz, T. Larmola, J. Leifeld, A. Lohila, A. M. Milner, K. Minkinen, P. Moss, B. D. A. Naafs, J. Nichols, J. O'Donnell, R. Payne, M. Philben, S. Piilo, A. Quillet, A. S. Ratnayake, T. P. Roland, S. Sjögersten, O. Sonnentag, G. T. Swindles, W. Swinnen, J. Talbot, C. Treat, A. C. Valach, and J. Wu. 2021. Expert assessment of future vulnerability of the global peatland carbon sink. *Nature Climate Change* 11(1): 70–77. <https://doi.org/10.1038/s41558-020-00944-0>.
- Mack, M. C., X. J. Walker, J. F. Johnstone, H. D. Alexander, A. M. Melvin, M. Jean, and S. N. Miller. 2021. Carbon loss from boreal forest wildfires offset by increased dominance of deciduous trees. *Science* 372(6539): 280–283. <https://doi.org/10.1126/science.abf3903>.
- Makri, A., and N. I. Stilianakis. 2008. Vulnerability to air pollution health effects. *International Journal of Hygiene and Environmental Health* 211(3–4): 326–336. <https://doi.org/10.1016/j.ijheh.2007.06.005>.
- Maringer, J., T. Wohlgemuth, C. Neff, G. B. Pezzatti, and M. Conedera. 2012. Post-fire spread of alien plant species in a mixed broad-leaved forest of the Insubric region. *Flora - Morphology, Distribution, Functional Ecology of Plants* 207 (1): 19–29. <https://doi.org/10.1016/j.flora.2011.07.016>.
- Marlon, J. R., P. J. Bartlein, C. Carcaillet, D. G. Gavin, S. P. Harrison, P. E. Higuera, F. Joos, M. J. Power, and I. C. Prentice. 2008. Climate and human influences on global biomass burning over the past two millennia. *Nature Geoscience* 1(10): 697–702. <https://doi.org/10.1038/ngeo313>.
- Marlon, J. R., P. J. Bartlein, D. G. Gavin, C. J. Long, R. S. Anderson, C. E. Briles, K. J. Brown, D. Colombaroli, D. J. Hallett, M. J. Power, E. A. Scharf, and M. K. Walsh. 2012. Long-term perspective on wildfires in the western USA. *Proceedings of the National Academy of Sciences* 109 (9): E535–43. <https://doi.org/10.1073/pnas.1112839109>.
- Maxwell, J. D., A. C. Rhodes, and S. B. St Clair. 2019. Human altered disturbance patterns and forest succession: impacts of competition and ungulate herbivory. *Oecologia* 189(4): 1061–1070.
- McCarty, J. L., J. Aalto, V.-V. Paunu, S. R. Arnold, S. Eckhardt, Z. Klimont, J. J. Fain, N. Evangelidou, A. Venäläinen, N. M. Tchebakova, E. I. Parfenova, K. Kupiainen, A. J. Soja, L. Huang, and S. Wilson. 2021. Reviews and syntheses: Arctic fire regimes and emissions in the 21st century. *Biogeosciences* 18: 5053–5083. <https://doi.org/10.5194/bg-18-5053-2021>.
- McClure, C. D., and D. A. Jaffe. 2018. US particulate matter air quality improves except in wildfire-prone areas. *Proceedings of the National Academy of Sciences* 115 (31): 7901–7906. <https://doi.org/10.1073/pnas.1804353115>.
- McDowell, N. G., C. D. Allen, K. Anderson-Teixeira, B. H. Aukema, B. Bond-Lamberty, L. Chini, J. S. Clark, M. Dietze, C. Grossiord, A. Hanbury-Brown, G. C. Hurtt, R. B. Jackson, D. J. Johnson, L. Kueppers, J. W. Lichstein, K. Ogle, B. Poulter, T. A. M. Pugh, R. Seidl, M. G. Turner, M. Uriarte, A. P. Walker, and C. Xu. 2020. Pervasive shifts in forest dynamics in a changing world. *Science* 368: eaaz9463. <https://doi.org/10.1126/science.aaz9463>.
- Metcalfe, D. B., T. D. G. Hermans, J. Ahlstrand, M. Becker, M. Berggren, R. G. Björk, M. P. Björkman, D. Blok, N. Chaudhary, C. Chisholm, A. T. Classen, N. J. Hasselquist, M. Jonsson, J. A. Kristensen, B. B. Kumordzi, H. Lee, J. R. Mayor, J. Prevéy, K. Pantazatou, J. Rousk, R. A. Sponseller, M. K. Sundqvist, J. Tang, J. Uddling, G. Wallin, W. Zhang, A. Ahlström, D. E. Tenenbaum, and A. M. Abdi. 2018. Patchy field sampling biases understanding of climate change impacts across the Arctic. *Nature Ecology & Evolution* 2: 1443–1448. <https://doi.org/10.1038/s41559-018-0612-5>.
- Mietkiewicz, N., J. K. Balch, T. Schoennagel, S. Leyk, L. A. St. Denis, and B. A. Bradley. 2020. In the line of fire: consequences of human-ignited wildfires to homes in the U.S. (1992–2015). *Fire* 3(3): 50. <https://doi.org/10.3390/fire3030050>.
- Miller, R. 2020. Prescribed Burns in California: a historical case study of the integration of scientific research and policy. *Fire* 3(3): 44. <https://doi.org/10.3390/fire3030044>.
- Mirzaei, J., M. Heydari, R. Omidipour, N. Jafarian, and C. Carcaillet. 2023. Decrease in soil functionalities and herbs' diversity, but not that of Arbuscular Mycorrhizal fungi, linked to short fire interval in semi-arid oak forest ecosystem, west Iran. *Plants* 12(5): 1112. <https://doi.org/10.3390/plants12051112>.
- Moerman, D. E., and G. F. Estabrook. 2006. The botanist effect: counties with maximal species richness tend to be home to universities and botanists. *Journal of Biogeography* 33(11): 1969–1974. <https://doi.org/10.1111/j.1365-2699.2006.01549.x>.
- Molinari, C., V. Lehsten, O. Blarquez, C. Carcaillet, B. A. S. Davis, J. O. Kaplan, J. Clear, and R. H. W. Bradshaw. 2018. The climate, the fuel and the land use: long-term regional variability of biomass burning in boreal forests. *Global Change Biology* 24(10): 4929–4945. <https://doi.org/10.1111/gcb.14380>.
- Molinari, C., C. Carcaillet, R. H. W. Bradshaw, G. E. Hannon, and V. Lehsten. 2020. Fire-vegetation interactions during the last 11,000 years in boreal and cold temperate forests of Fennoscandia. *Quaternary Science Reviews* 241: 106408. <https://doi.org/10.1016/j.quascirev.2020.106408>.
- Morgan, M. G. 2014. Use (and abuse) of expert elicitation in support of decision making for public policy. *Proceedings of the National Academy of Sciences* 111: 7176–7184. <https://doi.org/10.1073/pnas.1319946111>.
- Moritz, M. A., M. A. Parisien, E. Batllori, M. A. Krawchuk, J. Van Dorn, D. J. Ganz, and K. Hayhoe. 2012. Climate change and disruptions to global fire activity. *Ecosphere* 3(6): art49. <https://doi.org/10.1890/ES11-00345.1>.
- Moritz, M. A., M. A. Parisien, E. Batllori, M. A. Krawchuk, J. Van Dorn, D. J. Ganz, and K. Hayhoe. 2014. Learning to coexist with wildfire. *Nature* 515(7525): 58–66. <https://doi.org/10.1038/nature13946>.
- Moss, R. H., M. Babiker, S. Brinkman, E. Calvo, T. Carter, J. A. Edmonds, I. Elgizouli, S. Emori, E. Lin, K. Hibbard, R. Jones, M. Kainuma, J. Kelleher, J. F. Lamarque, M. Manning, B. Matthews, J. Meehl, L. Meyer, J. Mitchell, N. Nakicenovic, B. O'Neill, R. Pichs, K. Riahi, S. Rose, P. J. Runci, R. Stouffer, D. Van Vuuren, J. Weyant, T. Wilbanks, J. P. van Ypersele, and M. Zurek. 2008. Towards new scenarios for analysis of emissions, climate change, impacts, and response strategies. PNNL-SA-63186. Intergovernmental Panel on Climate Change, Geneva, Switzerland. <https://www.osti.gov/biblio/940991>.
- Mottl, O., S. G. A. Flantua, K. P. Bhatta, V. A. Felde, T. Giesecke, S. Goring, E. C. Grimm, S. Haberle, H. Hooghiemstra, S. Ivory, P. Kuneš, S. Wolters, A. W. R. Seddon, and J. W. Williams. 2021. Global acceleration in rates of vegetation change over the past 18,000 years. *Science* 372(6544): 860–864. <https://doi.org/10.1126/science.abg1685>.
- Nowacki, G. J., and M. D. Abrams. 2015. Is climate an important driver of post-european vegetation change in the eastern United States? *Global Change Biology* 21(1): 314–334. <https://doi.org/10.1111/gcb.12663>.

- Ogunbode, C. A. 2022. Climate justice is Social Justice in the global south. *Nature Human Behaviour* 6(11): 1443–1443. <https://doi.org/10.1038/s41562-022-01456-x>.
- Olson, D. M., E. Dinerstein, E. D. Wikramanayake, N. D. Burgess, G. V. N. Powell, E. C. Underwood, and J. A. D'Amico et al. 2001. Terrestrial ecoregions of the world: a new map of life on Earth a new global map of terrestrial ecoregions provides an innovative tool for conserving biodiversity. *BioScience* 51(11): 933–938. [https://doi.org/10.1641/0006-3568\(2001\)051\[0933:TEOTWA\]2.0.CO;2](https://doi.org/10.1641/0006-3568(2001)051[0933:TEOTWA]2.0.CO;2).
- Ordóñez, A., J. W. Williams, and J. Svenning. 2016. Mapping climatic mechanisms likely to favor the emergence of novel communities. *Nature Climate Change* 6(12): 1104–1109. <https://doi.org/10.1038/nclimate3127>.
- Pan, Y., R. A. Birdsey, J. Fang, R. Houghton, P. E. Kauppi, W. A. Kurz, O. L. Phillips, A. Shvidenko, S. L. Lewis, J. G. Canadell, P. Ciais, R. B. Jackson, S. W. Pacala, A. D. McGuire, S. Piao, A. Rautiainen, S. Sitch, and D. Hayes. 2011. A large and persistent carbon sink in the world's forests. *Science* 333(6045): 988–993. <https://doi.org/10.1126/science.1201609>.
- Parisien, M., Q. E. Barber, K. G. Hirsch, C. A. Stockdale, S. Erni, X. Wang, D. Arsenault, and S. A. Parks. 2020. Fire deficit increases wildfire risk for many communities in the Canadian boreal forest. *Nature Communications* 11(1): 2121. <https://doi.org/10.1038/s41467-020-15961-y>.
- Pausas, J. G., and J. E. Keeley. 2019. Wildfires as an ecosystem service. *Frontiers in Ecology and the Environment* 17(5): 289–295. <https://doi.org/10.1002/fee.2044>.
- Pechony, O., and D. T. Shindell. 2010. Driving forces of global wildfires over the past millennium and the forthcoming century. *Proceedings of the National Academy of Sciences* 107 (45): 19167–19170. <https://doi.org/10.1073/pnas.1003669107>.
- Pereira, J. M. C., D. Oom, P. C. Silva, and A. Benali. 2022. Wild, tamed, and domesticated: three fire macroregimes for global pyrogeography in the Anthropocene. *Ecological Applications* 32(6): e2588. <https://doi.org/10.1002/eap.2588>.
- Pyne, S. J. 2007. Problems, paradoxes, paradigms: triangulating fire research. *International Journal of Wildland Fire* 16(3): 271–276. <https://doi.org/10.1071/WF06041>.
- Radeloff, V. C., D. P. Helmers, H. A. Kramer, and S. I. Stewert. 2018. Rapid growth of the US wildland-urban interface raises wildfire risk. *Proceedings of the National Academy of Sciences* 115 (13): 3314–3319. <https://doi.org/10.1073/pnas.1718850115>.
- Ramo, R., E. Roteta, I. Bistinas, D. van Wees, A. Bastarrika, E. Chuvieco, and G. R. van der. 2021. Werf. African burned area and fire carbon emissions are strongly impacted by small fires undetected by coarse resolution satellite data. *Proceedings of the National Academy of Sciences* 118 (9): e2011160118. <https://doi.org/10.1073/pnas.2011160118>.
- Raymond, C., R. M. Horton, J. Zscheischler, O. Martius, A. AghaKouchak, J. Balch, S. G. Bowen, S. J. Camargo, J. Hess, K. Kornhuber, M. Oppenheimer, A. C. Ruane, T. Wahi, and K. White. 2020. Understanding and managing connected extreme events. *Nature Climate Change* 10(7): 611–621. <https://doi.org/10.1038/s41558-020-0790-4>.
- R Core Team. 2019. R Vienna, Austria: R foundation for statistical computing. <https://www.R-project.org/>.
- Rogers, B. M., J. K. Balch, S. J. Goetz, C. E. R. Lehmann, and M. Turetsky. 2020. Focus on changing fire regimes: interactions with climate, ecosystems, and society. *Environmental Research Letters* 15(3): 030201. <https://doi.org/10.1088/1748-9326/ab6d3a>.
- Sayedi, S. S., B. W. Abbott, B. F. Thornton, J. M. Frederick, J. E. Vonk, P. Overduin, C. Schädel, E. A. G. Schuur, A. Bourbonnais, N. Demidov, A. Gavrillov, S. He, G. Hugelius, M. Jakobsson, M. C. Jones, D. Joung, G. Kraev, R. W. MacDonald, A. D. McGuire, C. Mu, M. O'Regan, K. M. Schreiner, C. Stranne, E. Pizhankova, A. Vasiliev, S. Westermann, J. P. Zarnetske, T. Zhang, M. Ghandehari, S. Baeumler, B. C. Brown, and R. J. Frei. 2020. Subsea permafrost carbon stocks and climate change sensitivity estimated by expert assessment. *Environmental Research Letters* 15(12): 124075. <https://doi.org/10.1088/1748-9326/abcc29>.
- Scheffer, M., J. Bascompte, W. A. Brock, V. Brovkin, S. R. Carpenter, V. Dakos, H. Held, E. H. van Nes, M. Rietkerk, and G. Sugihara. 2009. Early-warning signals for critical transitions. *Nature* 461(7260): 53–59. <https://doi.org/10.1038/nature08227>.
- Schmerbeck, J., and P. Fiener. 2015. Wildfires, ecosystem services, and biodiversity in tropical dry forest in India. *Environmental Management* 56(2): 355–372. <https://doi.org/10.1007/s00267-015-0502-4>.
- Schoennagel, T., J. K. Balch, H. Brenkert-Smith, P. E. Dennison, B. J. Harvey, M. A. Krawchuk, N. Mietkiewicz, P. Morgan, M. A. Moritz, R. Rasker, M. G. Turner, and C. Whitlock. 2017. Adapt to more wildfire in western north American forests as climate changes. *Proceedings of the National Academy of Sciences* 114 (18): 4582–4590.
- Scholten, R. C., R. Jandt, E. A. Miller, B. M. Rogers, and S. Veraverbeke. 2021. Overwintering fires in boreal forests. *Nature* 593(7859): 399–404. <https://doi.org/10.1038/s41586-021-03437-y>.
- Schuur, E. A. G., B. W. Abbott, W. B. Bowden, V. Brovkin, P. Camill, J. G. Canadell, J. P. Chanton, F. S. Chapin, T. R. Christensen, P. Ciais, B. T. Crosby, C. I. Czimczik, G. Grosse, J. Harden, D. J. Hayes, G. Hugelius, J. D. Jastrow, J. B. Jones, T. Kleinen, C. D. Koven, G. Krinner, P. Kuhry, D. M. Lawrence, A. D. McGuire, S. M. Natali, J. A. O'Donnell, C. L. Ping, W. J. Riley, A. Rinke, V. E. Romanovsky, A. B. K. Sannel, C. Schädel, K. Schaefer, J. Sky, Z. M. Subin, C. Tarnocai, M. R. Turetsky, M. P. Waldrop, K. M. Walter Anthony, K. P. Wickland, and C. J. Wilson. 2013. and S. A. Zimov. Expert assessment of vulnerability of permafrost carbon to climate change. *Climatic Change* 119 (2): 359–374. <https://doi.org/10.1007/s10584-013-0730-7>.
- Schuur, E. A. G., B. W. Abbott, R. Commane, J. Ernakovich, E. Euskirchen, G. Hugelius, G. Grosse, M. Jones, C. Koven, V. Leshy, D. M. Lawrence, M. M. Loranty, M. Mauritz, D. Olefeldt, S. Natali, H. Rodenhizer, V. Salmon, C. Schädel, J. Strauss, C. Treat, and M. Turetsky. 2022. Permafrost and climate change: carbon cycle feedbacks from the warming Arctic. *Annual Review of Environment and Resources* 47(1): 343–371. <https://doi.org/10.1146/annurev-environ-012220-011847>.
- Silveira, J. M., J. Louzada, J. Barlow, R. Andrade, L. Mestre, R. Solar, S. Lacau, and M. A. Cochrane. 2016. A multi-taxa assessment of biodiversity change after single and recurrent wildfires in a Brazilian Amazon forest. *Biotropica* 48(2): 170–180. <https://doi.org/10.1111/btp.12267>.
- Słowiński, M., M. Obremska, D. Avirmed, M. Wozzyczek, S. Adiya, D. Łuców, A. Mroczkowska, A. Halaś, W. Szczuciński, A. Kruk, M. Lamentowicz, J. Stańczak, and N. Rudaya. 2022. Fires, vegetation, and human—the history of critical transitions during the last 1000 years in northeastern Mongolia. *Science of the Total Environment* 838: 155660. <https://doi.org/10.1016/j.scitotenv.2022.155660>.
- Smith, A. J. P., M. W. Jones, J. T. Abatzoglou, J. G. Canadell, and R. A. Betts. 2020. Climate change increases the risk of wildfires. Zenodo. <https://doi.org/10.5281/ZENODO.4570195>.
- Stephens, S. L., M. A. Battaglia, D. J. Churchill, B. M. Collins, M. Coppoletta, C. M. Hoffman, J. M. Lydersen, M. P. North, R. A. Parsons, S. M. Ritter, and J. T. Stevens. 2020. Forest restoration and fuels reduction: convergent or divergent? *BioScience*, 71: 85–101. <https://doi.org/10.1093/biosci/biaa134>.
- Sutherland, W. J., and M. Burgman. 2015. Policy advice: use experts wisely. *Nature News* 526(7573): 317. <https://doi.org/10.1038/526317a>.
- Syphard, A. D., V. C. Radeloff, J. E. Keeley, T. J. Hawbaker, M. K. Clayton, S. I. Stewart, and R. B. Hammer. 2007. Human influence on California fire regimes. *Ecological Applications* 17(5): 1388–1402.
- Talucci, A. C., M. M. Loranty, and H. D. Alexander. 2022. Siberian taiga and tundra fire regimes from 2001–2020. *Environmental Research Letters* 17(2): 025001. <https://doi.org/10.1088/1748-9326/ac3f07>.
- Tessum, C. W., J. S. Apte, A. L. Goodkind, N. Z. Muller, K. A. Mullins, D. A. Paoletta, and S. Polasky et al. 2019. Inequity in consumption of goods and services adds to racial-ethnic disparities in air pollution exposure. *Proceedings of the National Academy of Sciences* 116 (13): 6001–6006. <https://doi.org/10.1073/pnas.1818859116>.
- Tian, C., X. Yue, J. Zhu, H. Liao, Y. Yang, Y. Lei, X. Zhou, Y. Ma, and Y. Cao. 2022. Fire-climate interactions through the aerosol radiative effect in a global chemistry-climate-vegetation model. *Atmospheric Chemistry and Physics* 22(18): 12353–12366. <https://doi.org/10.5194/acp-22-12353-2022>.
- Trauernicht, C., E. Pickett, C. P. Giardina, C. M. Litton, S. Cordell, and A. Beavers. 2015. The contemporary scale and context of wildfire in Hawai'i. *Pacific Science* 69(4): 427–444. <https://doi.org/10.2984/69.4.1>.
- Turco, M., J. Hardenberg, A. AghaKouchak, M. C. Llasat, A. Provenzale, and R. M. Trigo. 2017. On the key role of droughts in the dynamics of summer fires in Mediterranean Europe. *Scientific Reports* 7(1): 81. <https://doi.org/10.1038/s41598-017-00116-9>.
- Turco, M., J. J. Rosa-Cánovas, J. Bedia, S. Jerez, J. P. Montávez, M. C. Llasat, and A. Provenzale. 2018. Exacerbated Fires in Mediterranean Europe due to anthropogenic warming projected with non-stationary climate-fire models. *Nature Communications* 9(1): 3821. <https://doi.org/10.1038/s41467-018-06358-z>.

- Valese, E., M. Conedera, A. C. Held, and D. Ascoli. 2014. Fire, humans and landscape in the European Alpine region during the Holocene. *Anthropocene Landscapes in the Anthropocene* 6: 63–74. <https://doi.org/10.1016/j.ancene.2014.06.006>.
- Veldman, J. W., J. C. Aleman, S. T. Alvarado, T. M. Anderson, S. Archibald, W. J. Bond, T. W. Boutton, N. Buchmann, E. Buisson, J. G. Canadell, M. de Sa. Dechoum, M. H. Diaz-Toribio, G. Durigan, J. J. Ewel, G. W. Fernandes, A. Fidelis, F. Fleischman, S. P. Good, D. M. Griffith, J. M. Hermann, W. A. Hoffmann, S. Le Stradic, C. E. R. Lehmann, G. Mahy, A. N. Nerlekar, J. B. Nippert, R. F. Noss, C. P. Osborne, G. E. Overbeck, C. L. Parr, J. G. Pausas, R. T. Pennington, M. P. Perring, F. E. Putz, J. Ratnam, M. Sankaran, I. B. Schmidt, C. B. Schmitt, F. A. O. Silveira, A. C. Staver, N. Stevens, C. J. Still, C. A. E. Strömberg, V. M. Temperton, J. M. Varner, and N. P. Zaloumis. 2019. Comment on 'The global tree restoration potential'. *Science* 366(6463): eaay7976. <https://doi.org/10.1126/science.aay7976>.
- Walker, X. J., J. L. Baltzer, S. G. Cumming, N. J. Day, C. Ebert, S. Goetz, J. F. Johnstone, S. Potter, B. M. Rogers, E. A. G. Schuur, M. R. Turetsky, and M. C. Mack. 2019. Increasing wildfires threaten historic carbon sink of boreal forest soils. *Nature* 572(7770): 520–523. <https://doi.org/10.1038/s41586-019-1474-y>.
- Wan, H., K. D. Olson, Muncey, and S. B. St. Clair. 2014. Legacy effects of fire size and severity on forest regeneration, recruitment, and wildlife activity in aspen forests. *Forest Ecology and Management* 329: 59–68. <https://doi.org/10.1016/j.foreco.2014.06.006>.
- Wasserman, T. N., and S. E. Mueller. 2023. Climate influences on future fire severity: a synthesis of climate-fire interactions and impacts on fire regimes, high-severity fire, and forests in the western United States. *Fire Ecology* 19(1): 43. <https://doi.org/10.1186/s42408-023-00200-8>.
- Watson, J. E. M., O. Venter, J. Lee, K. R. Jones, J. G. Robinson, H. P. Possingham, and J. R. Allan. 2018. Protect the last of the wild. *Nature* 563(7729): 27. <https://doi.org/10.1038/d41586-018-07183-6>.
- Witze, A. 2023. This quiet lake could mark the start of a new Anthropocene epoch. *Nature* 619(7970): 441–442. <https://doi.org/10.1038/d41586-023-02234-z>.
- Wu, M., W. Knorr, K. Thonicke, G. Schurgers, A. Camia, and A. Arneeth. 2015. Sensitivity of burned area in Europe to climate change, atmospheric CO<sub>2</sub> levels, and demography: a comparison of two fire-vegetation models. *Journal of Geophysical Research: Biogeosciences* 120(11): 2256–2272. <https://doi.org/10.1002/2015JG003036>.
- Xie, Y., M. Lin, B. Decharme, C. Delire, L. W. Horowitz, D. M. Lawrence, F. Li, and R. Séférian. 2022. Tripling of western US particulate pollution from wildfires in a warming climate. *Proceedings of the National Academy of Sciences* 119(14): e2111372119. <https://doi.org/10.1073/pnas.2111372119>.
- Zong, X., X. Tian, and Y. Yin. 2020. Impacts of climate change on wildfires in central Asia. *Forests* 11(8): 802. <https://doi.org/10.3390/f11080802>.

## Publisher's Note

Springer Nature remains neutral with regard to jurisdictional claims in published maps and institutional affiliations.