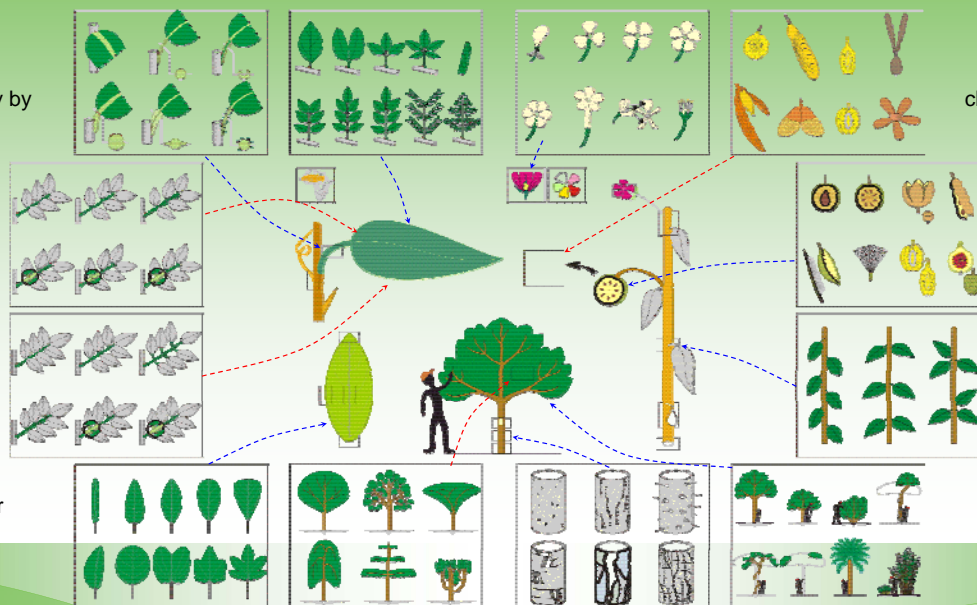


Graphical interface

- Multi-entry identification approach with morphological, ecological and geographical identification characters (friendly user interface, non-ordered characters selection, graphical representation of characters states combination)
- On-line and off-line access, with applications to several different floras (ligneous trees, invasive weeds, epiphytic plants, ...)

Direct Link : Identification characters accessible directly by simple click on the graphic interface

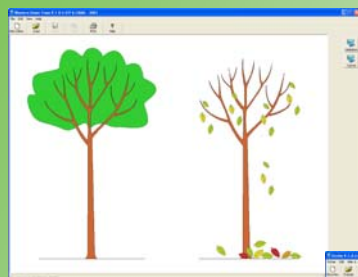
Indirect Link : Identification characters accessible only after the selection of a previous parent-state of character



Specific interface : Graphic interface adapted to particular flora, or specific end-users

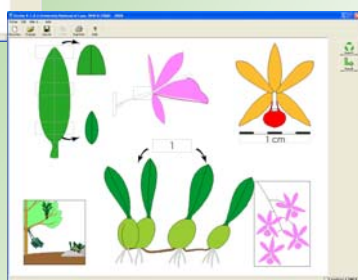
Background knowledge : No need of specific botanical knowledge (adapted to numerous potential non-specialists, only one application for various languages)

Graphical advantages



Easily understandable presentation of characters states

Identikit updated with user selections



Various possible fields of application (floral or vegetative morphology, palynology, wood anatomy, etc...)

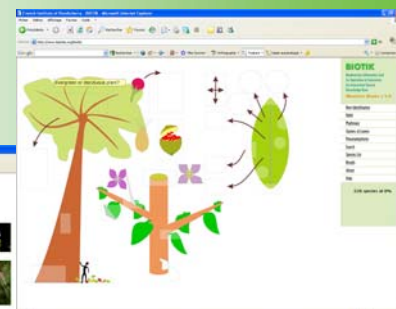
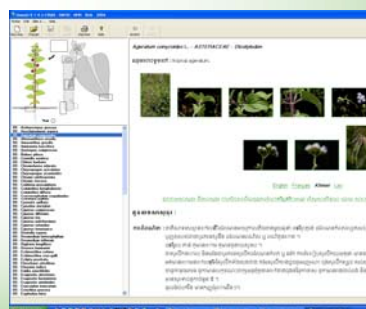
Powerful functionalities

Multi-entry system, tolerant to observational errors
Missing information tolerated
Numerous descriptions, photos and illustrations by species



Portable on several supports, for field use or laboratory work..

Accessible on-line on Internet, with SVG format.



Multilingual applications