

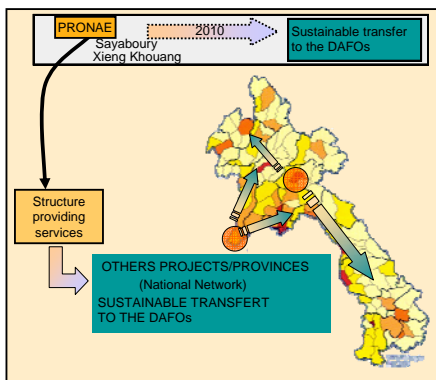
Direct seeding Mulch based Cropping systems (DMC) in Lao PDR

A sector-based program in agroecology for a national extension of DMC

A. Chabanne, F. Tivet,
L. Séguy, H. Tran Quoc,
P. Lienhard

BACKGROUND

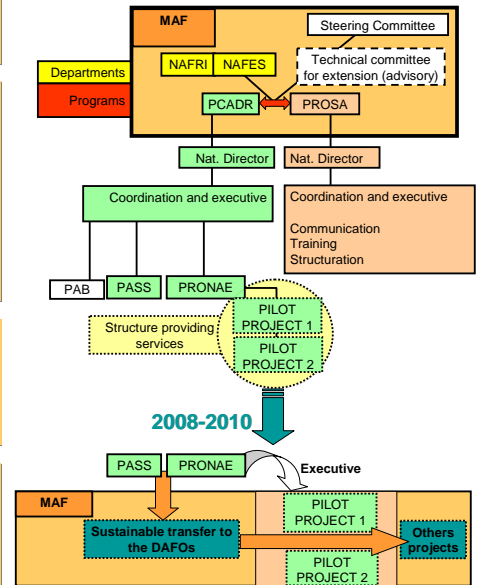
According to the results obtained by the Lao National Agroecology Program (PRONAE), the Council of Ministers asked, on the one hand, to the Ministry of Agriculture and Forestry (MAF) to promote DMC technologies to the whole of Lao PDR and, on the other hand, that this approach is registered in the university and school courses. The national authorities required from Cirad and AFD a support for the implementation of a sectoral program in agroecology.



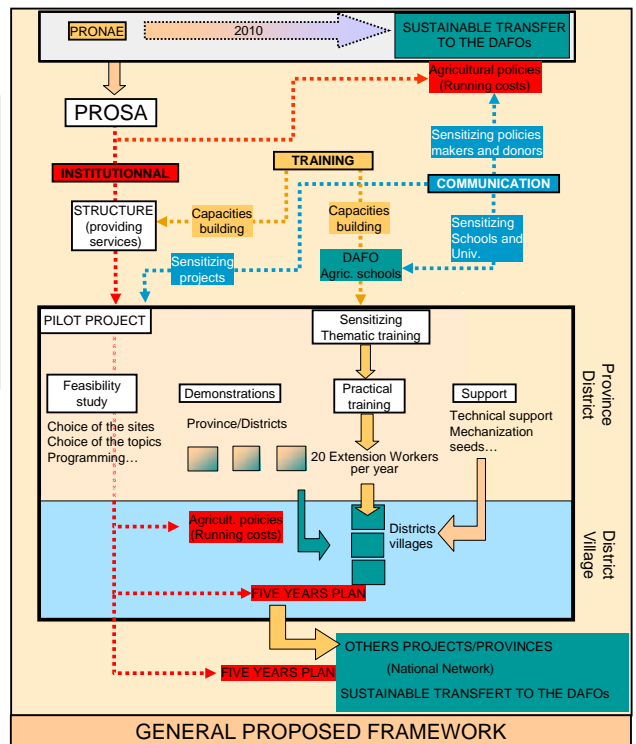
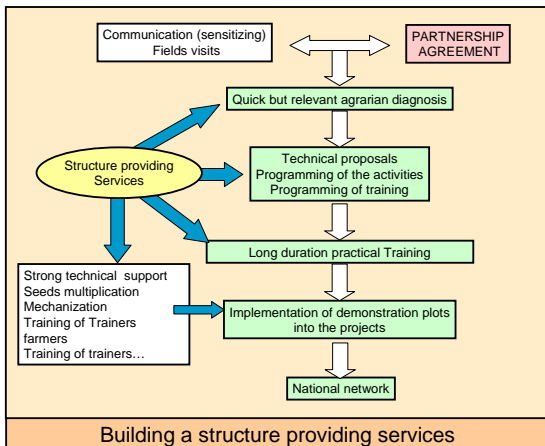
OBJECTIVES

- 1. TO BUILD A SUSTAINABLE ET FAVORABLE INSTITUTIONAL, TECHNICAL AND FINANCIAL CONTEXT** To extend the results to the whole RDL Lao;
- 2. TO SUPPORT MAF** for the definition, the programming and the implementation of its **NATIONAL STRATEGY** for DMC technologies extension;
- 3. TO STRUCTURE AND ANIMATE the PARTNERSHIP** between the various institutions working for the promotion of agroecology (DMC): PRONAE/NAFRI-CIRAD, NAFES, MAF, Universities/Faculties, Media...;
- 4. TO ENSURE THE STEP BY STEP TRANSFER** of methodology and results to the national services of extension. This transfer will have to be sustainable (human Resources, institutional, technical and financial capacities...);
- 5. To support the PRONAE** in its evolution towards a **SUSTAINABLE STRUCTURE** in charge of the activities of expertise, training (technical and scientific), and support to the agricultural development. **BY PROVIDING THESE SERVICES** to the projects, it will have a capacity to establish **OWN RESOURCES** thus contributing to its sustainability.

STRUCTURATION



PARTNERSHIP WITH RURAL DEVELOPMENT PROJECTS



Lao National Agro-Ecology Programme

PO Box 10990, Vientiane, Lao PDR, email: pronae-pcadr@nafri.org.la, Tel/Fax: (856 21) 770027