

Extractive activities / dams, and negotiation issues : hypothesis for discussion

Geert van Vliet

1998

At the very start of the activity, employment is generated (building phase), the social and environmental impacts are not visible, the use of updated technologies avoids environmental impacts, the first representatives of the operators are open to negotiation



0

T (10,20 years)

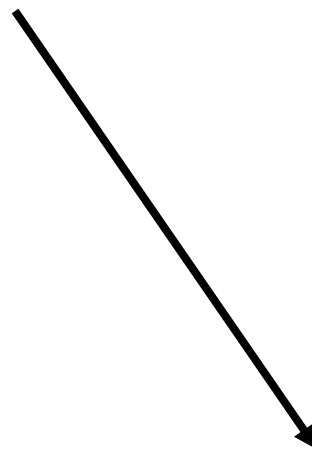
Once the activities have started, there are changes regarding the representatives of the operators, and even entire substitutions of operators



0

T (10,20 years)

Towards the end of the activity the social and environmental impacts become more visible, the technical installations turn obsolete and do not answer anymore to the standards of environmental preservation, the representatives of the operators or even new operators tend to be closed for any negotiation, labour directly hired by the operators is replaced by indirect and short term labour, respect for security and environmental measures decreases



0

T (10,20 años)

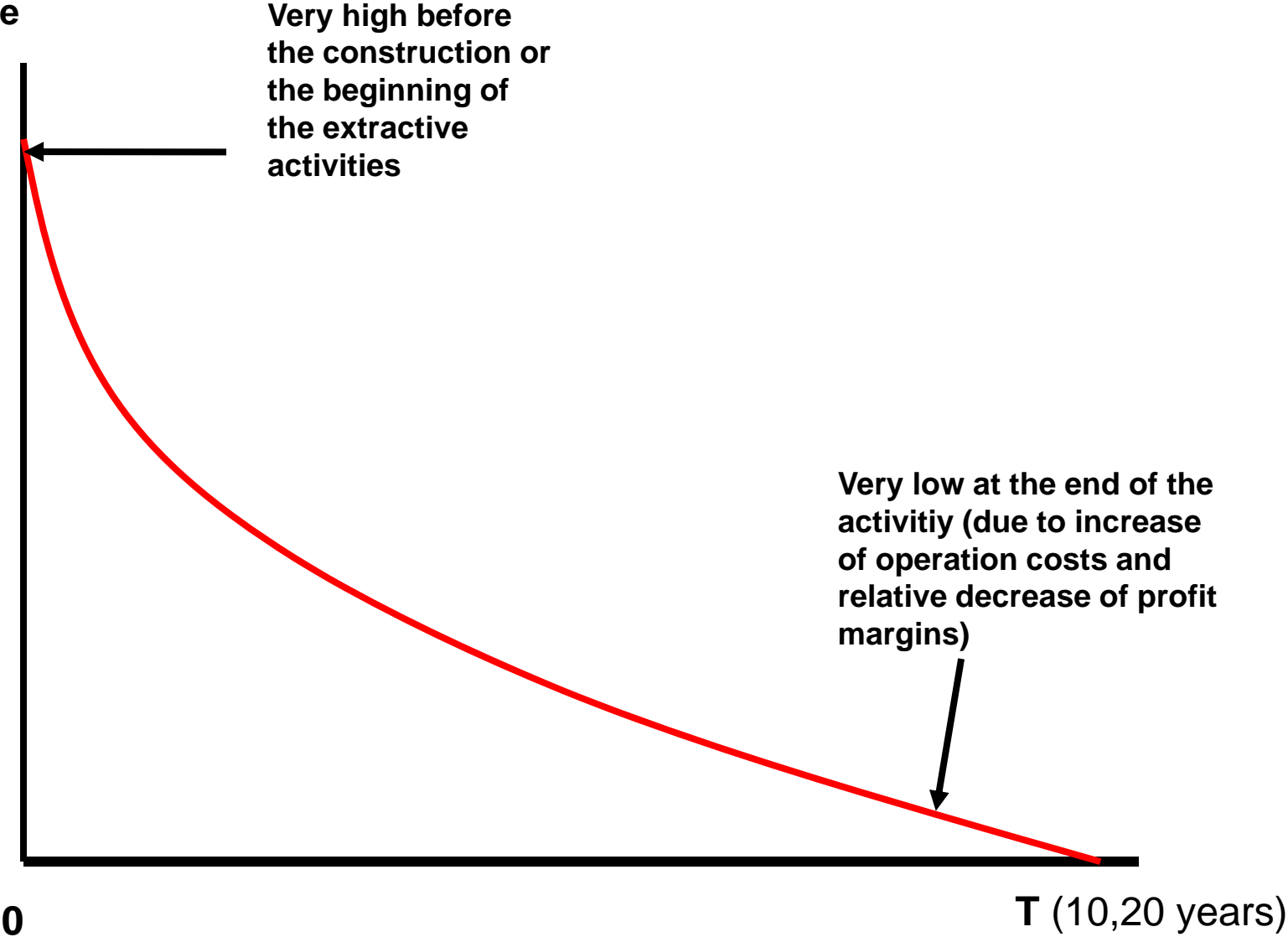
**Enterprises:
disposition
to compensate**

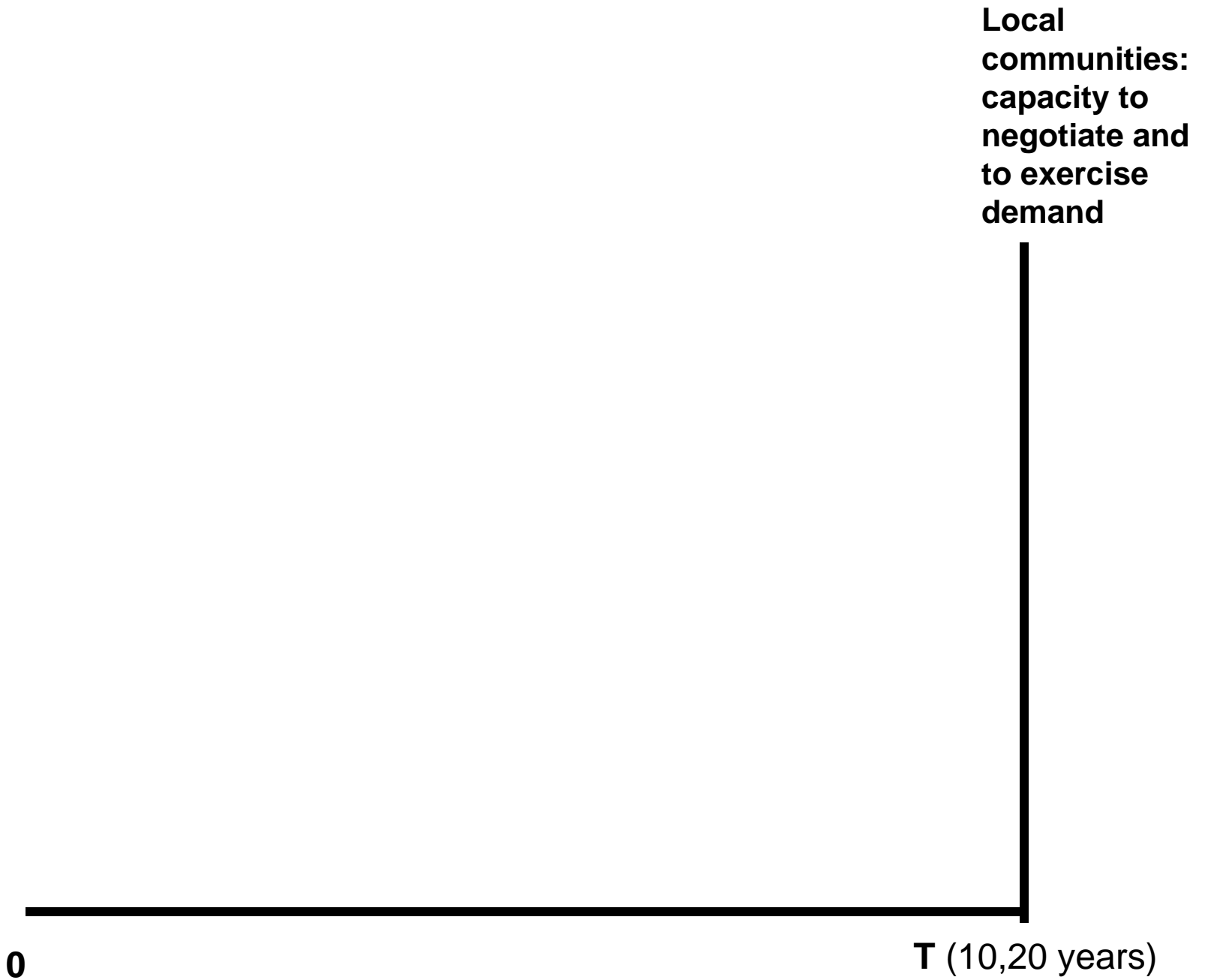


0

T (10,20 years)

**Enterprises:
disposition
to compensate**

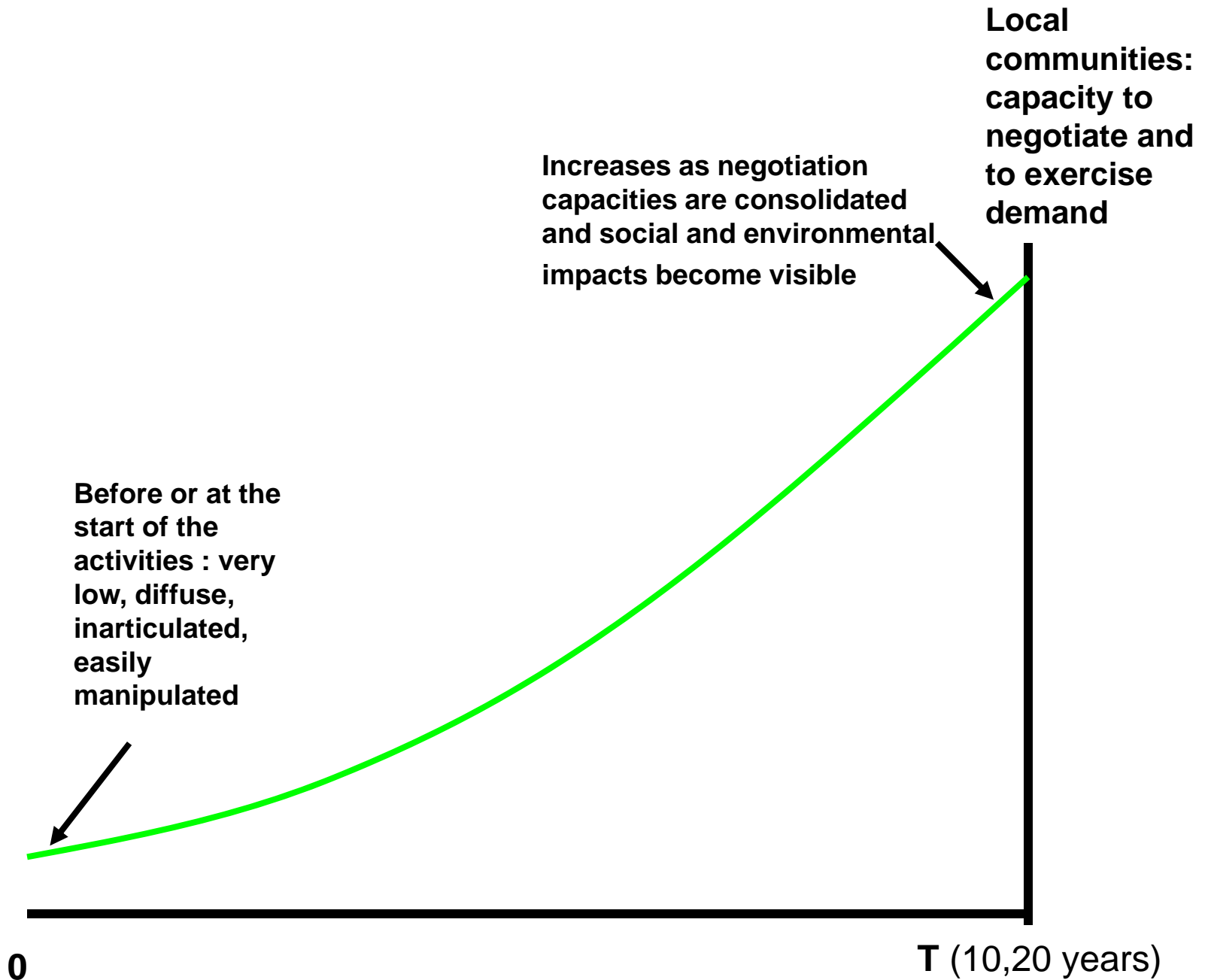




**Local
communities:
capacity to
negotiate and
to exercise
demand**

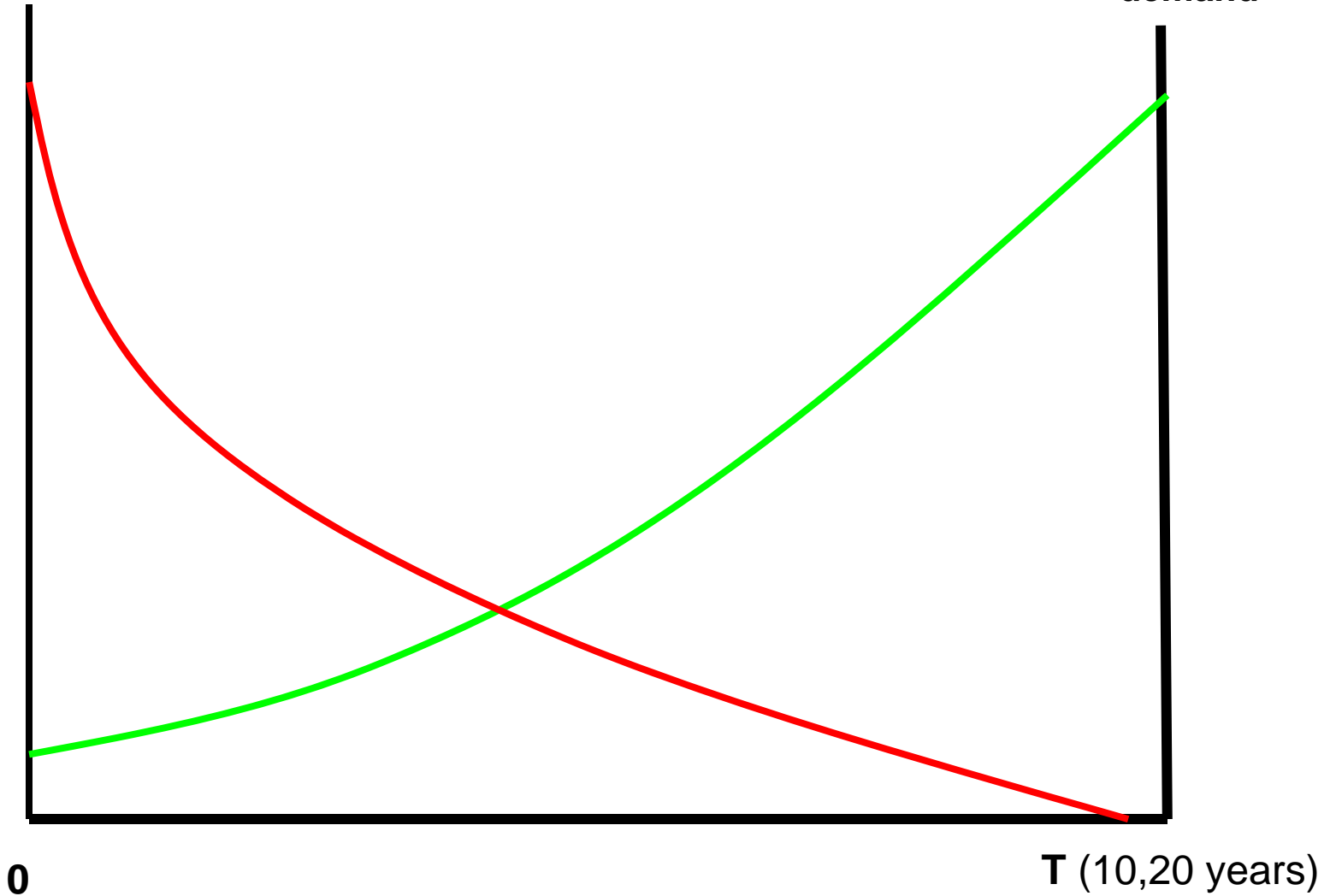
0

T (10,20 years)



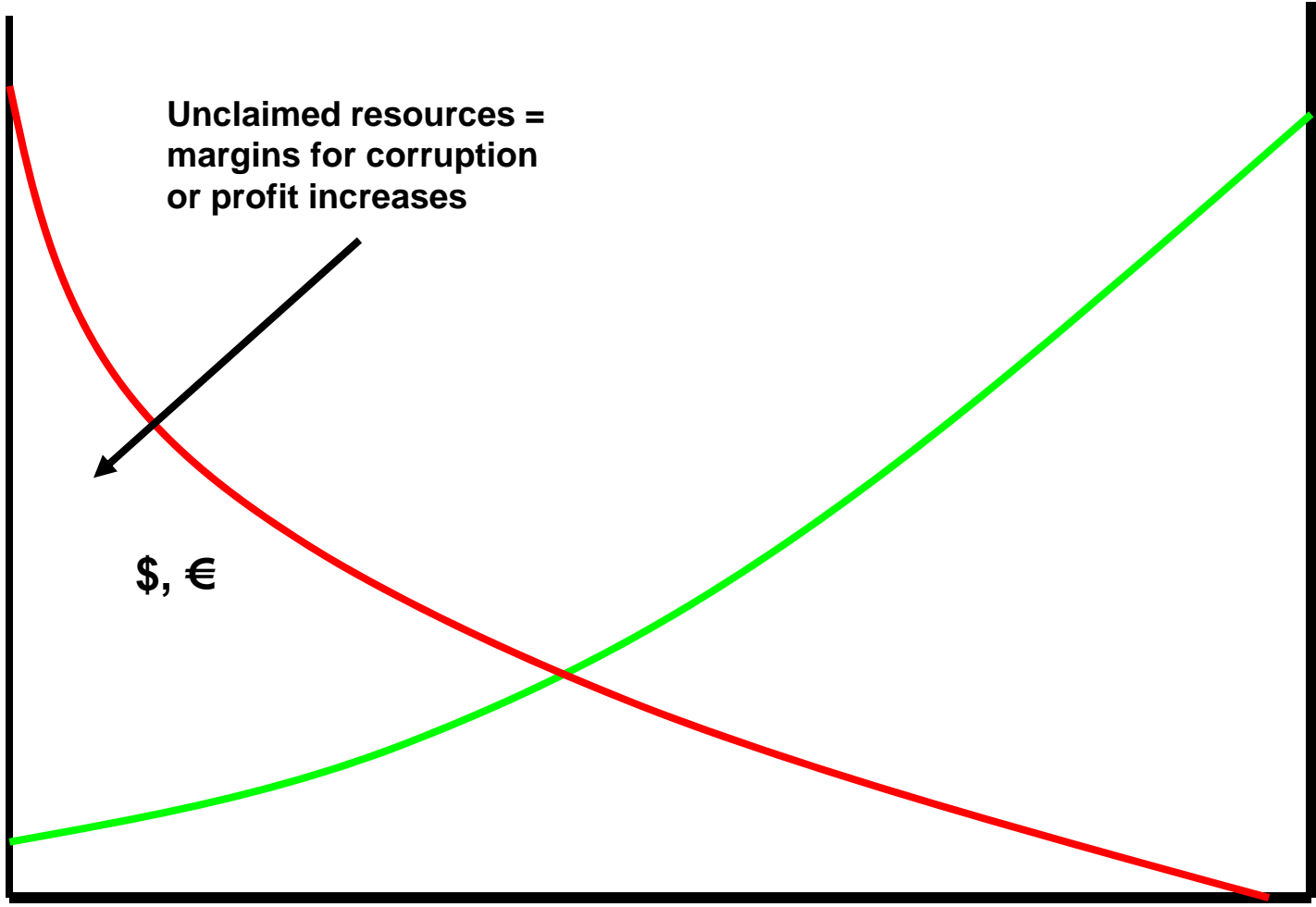
**Enterprises:
disposition
to compensate**

**Local
communities:
capacity to
negotiate and
to exercise
demand**



**Enterprises:
disposition
to compensate**

**Local
communities
: capacity to
negotiate
and to
exercise
demand**



**Unclaimed resources =
margins for corruption
or profit increases**

\$, €

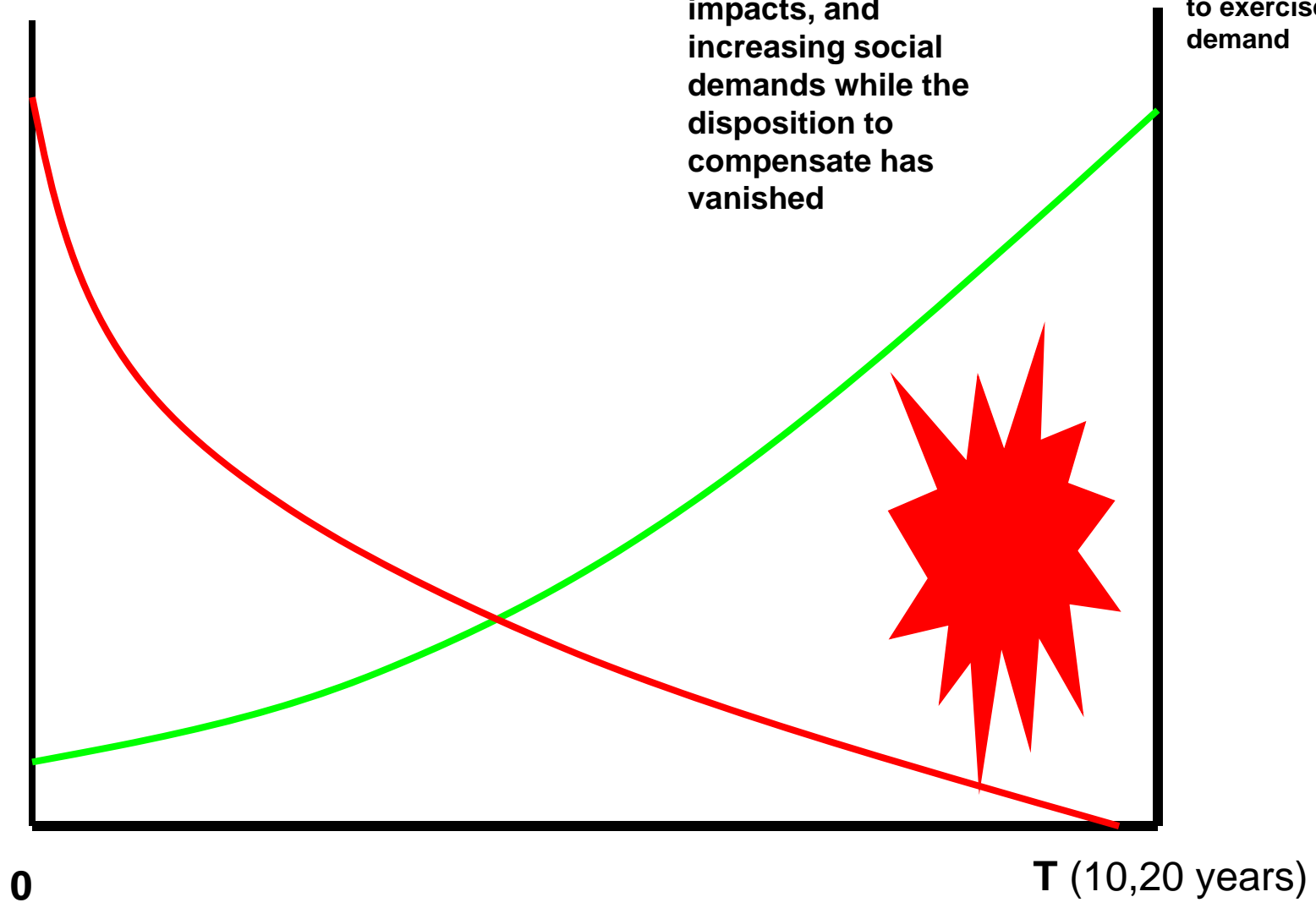
0

T (10,20 years)

**Enterprises:
disposition
to compensate**

**Growing conflicts
around social and
environmental
impacts, and
increasing social
demands while the
disposition to
compensate has
vanished**

**Local
communities:
capacity to
negotiate and
to exercise
demand**

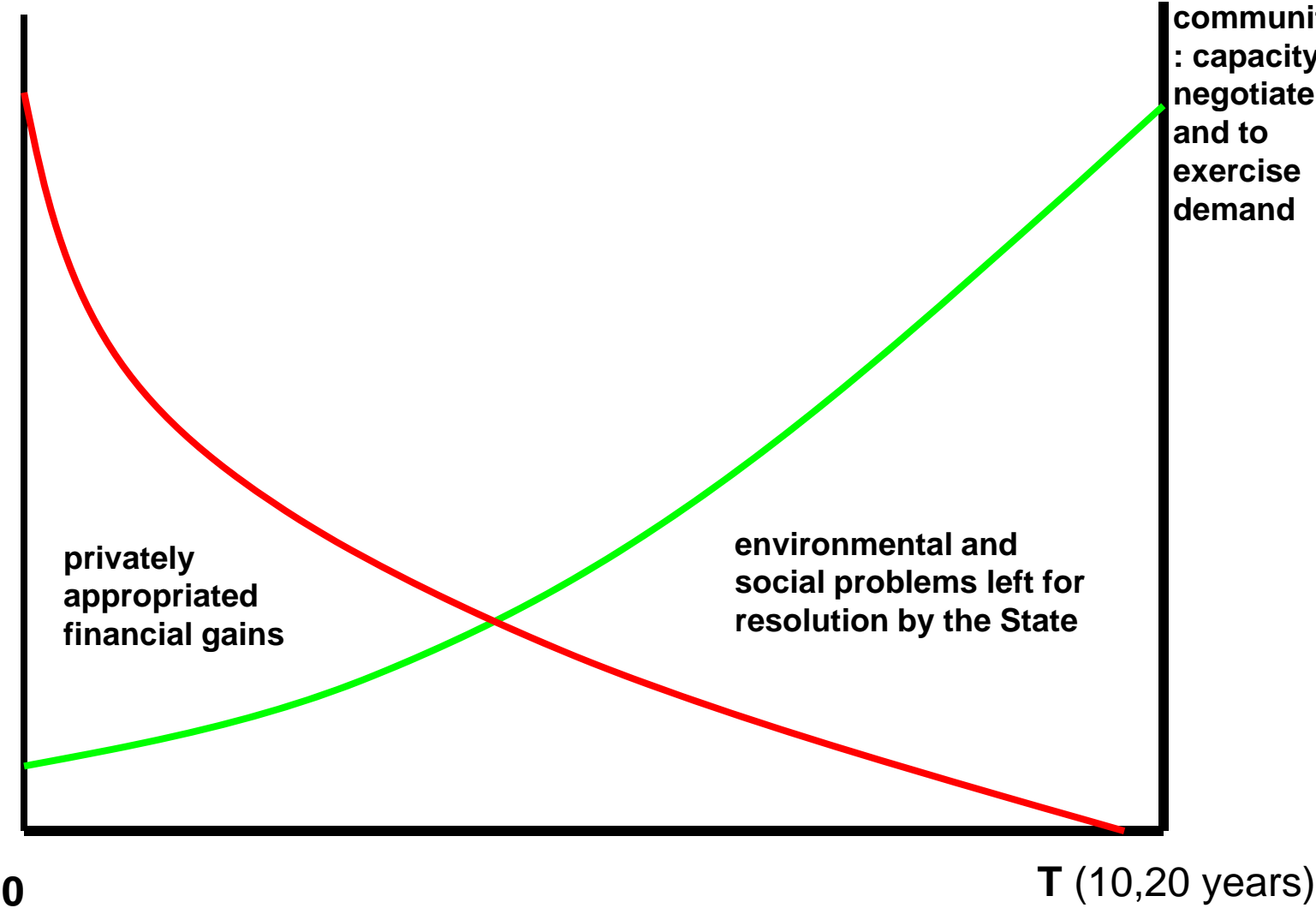


0

T (10,20 years)

**Enterprises:
disposition
to compensate**

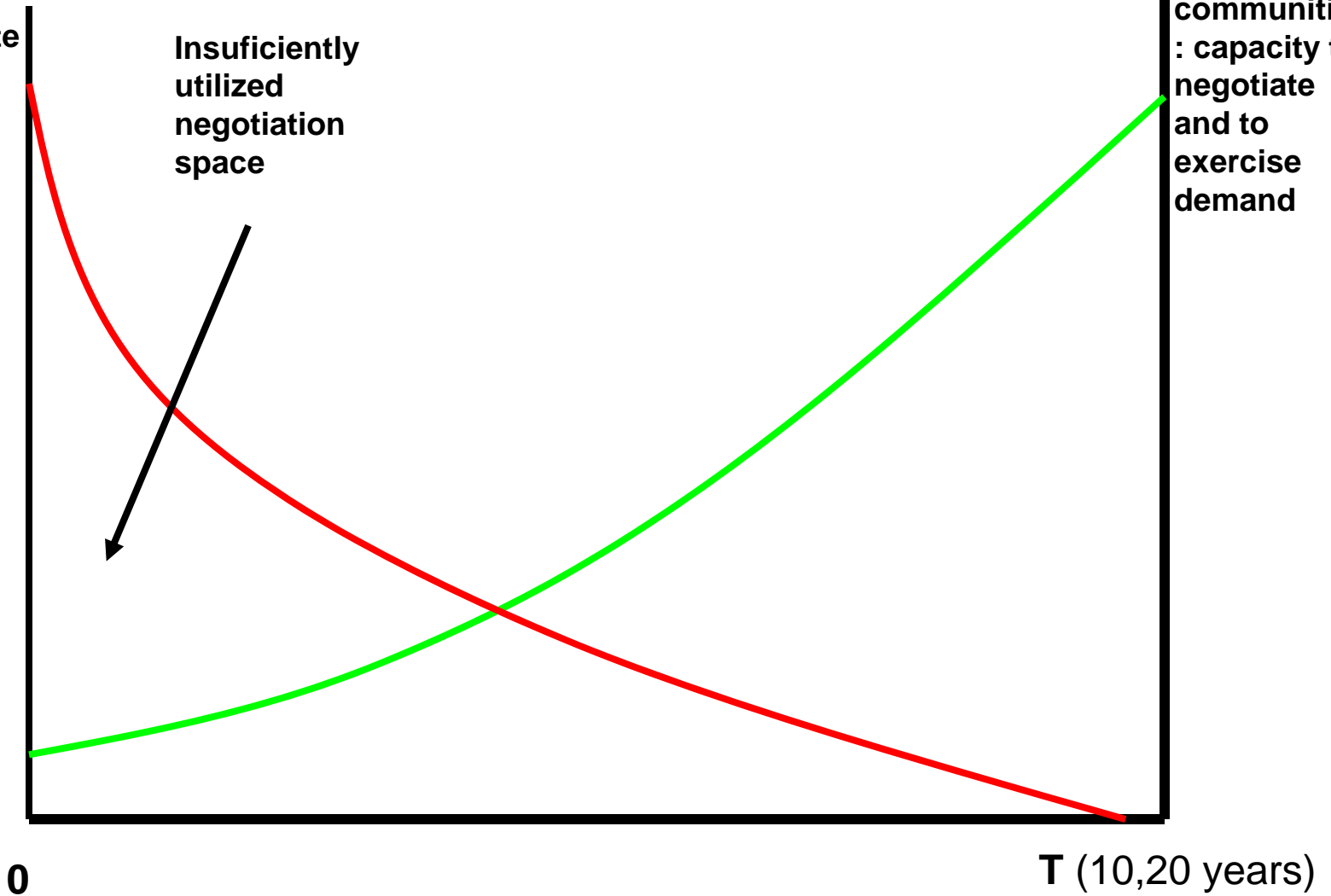
**Local
communities
: capacity to
negotiate
and to
exercise
demand**



**Enterprises:
disposition
to compensate**

**Insufficiently
utilized
negotiation
space**

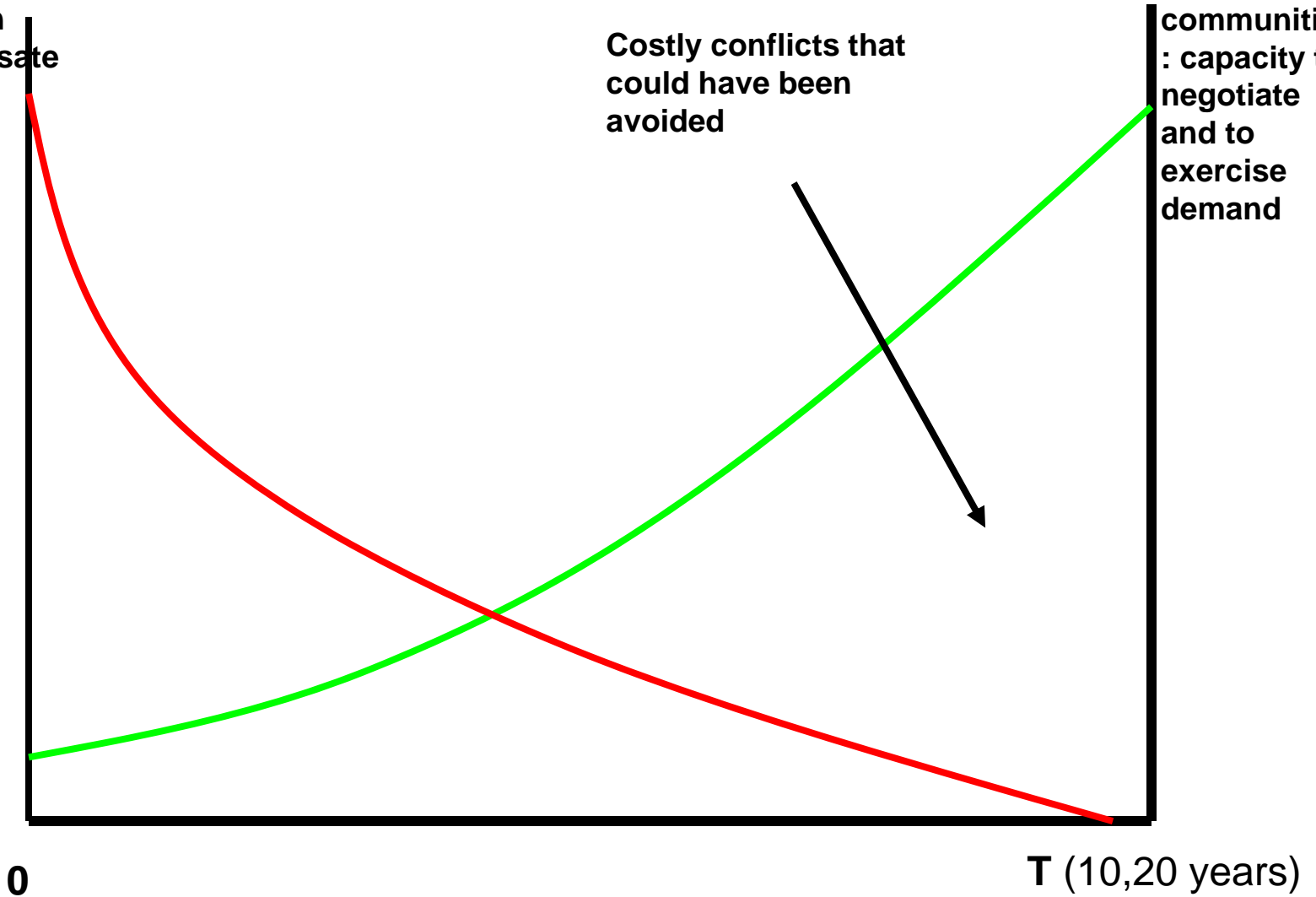
**Local
communities
: capacity to
negotiate
and to
exercise
demand**



**Enterprises:
disposition
to compensate**

**Local
communities
: capacity to
negotiate
and to
exercise
demand**

**Costly conflicts that
could have been
avoided**



**Enterprises:
disposition
to compensate**

**Local
communities
: capacity to
negotiate
and to
exercise
demand**

**Alternatives : creation of fiduciary
regional or local funds managed
by local communities (producers
organizations, local governments,
NGOs, civil society associations)?
Other options?**

