


**APS Journals**

The premier source for peer-reviewed plant pathology research since 1911.

[Journals Home](#) | [Books Home](#) | [APS Home](#) | [IS-MPMI Home](#) | [My Profile](#) | [Subscribe](#) | [Search](#) | [Advanced Search](#) | [Help](#)
[Share](#) | 

[Subscribe](#) | [Free alerts](#) | [RSS](#)

 About the cover for  
October 2018

 ISSN: 0191-2917  
e-ISSN: 1943-7692

**SEARCH**

Enter Keywords

- MPMI
- Phytobiomes
- Phytopathology
- Plant Disease
- Plant Health
- Progress

[Advanced Search](#)
**Resources**

- [Subscribe](#)
- [About Plant Disease](#)
- [First Look](#)
- [Most Downloaded Articles](#)
- [Journals Impact](#)
- [Submit a Manuscript](#)
- [Customer Care](#)
- [About My Password](#)
- [Rights and Permissions](#)
- [Plagiarism and Ethics](#)
- [Advertise](#)
- [e-Xtra](#)
- Open Access
- ORCID Registry

**ORCID**  
Connecting Research  
and Researchers

REGISTRATION IS  
FREE AND FAST.

ORCID is an open, non-profit,  
community driven organization.

Your ORCID ID ensures  
you get credit for your work  
throughout your career.

Register today at  
orcid.org

# plant disease

 Editor-in-Chief: Alison E. Robertson  
Published by The American Phytopathological Society

[Home](#) > [Plant Disease](#) > [Table of Contents](#) > [Full Text HTML](#)
[Previous Article](#) | [Next Article](#)

October 2018, Volume 102, Number 10

Page 2052

<https://doi.org/10.1094/PDIS-03-18-0404-PDN>

## DISEASE NOTES

### First Report of Alfalfa Leaf Curl Virus Affecting Alfalfa (*Medicago sativa*) in Jordan, Lebanon, Syria, and Tunisia

**S. G. Kumari** and **A. R. Moukahel**, International Center for Agricultural Research in the Dry Areas (ICARDA), Terbol Station, Beqa'a, Zahle, Lebanon; **C. Richet**, **S. Galzi**, **D. Filloux**, and **P. Roumagnac** , <sup>†</sup> CIRAD, BGPI, Montpellier, France and BGPI, INRA, CIRAD, SupAgro, Univ. Montpellier, Montpellier, France; **N. Asaad**, General Commission for Scientific Agricultural Research (GCSAR), Al-Ghab, Hama, Syria; **J. Hijazi**, National Center for Agricultural Research and Extension (NCARE), Jordan; and **S. Mghandef**, Virology Lab, ICARDA, Tunisia.

#### Citation

 Open Access.

The genus *Capulavirus* (family *Geminiviridae*) includes plant-infecting single-stranded DNA viruses with circular genomes that have been characterized in Africa, Europe, and Asia (Bernardo et al. 2016; Susi et al. 2017). Among the capulaviruses, alfalfa leaf curl virus (ALCV) is transmitted by the aphid species *Aphis craccivora* Koch (Roumagnac et al. 2015). Although initially isolated from France and Spain (Bernardo et al. 2016), ALCV was recently reported from Argentina (Bejerman et al. 2018). In 2017, leaves of 184 alfalfa (*Medicago sativa* L.) plants with symptoms suggestive of virus infection (leaf roll, stunting, mottling, and leaf thickening) were collected from Jordan (57 samples from Jordan valley and Ar Ramtha), Lebanon (50 samples from West and Middle Beka'a valley), Syria (40 samples from Hama Governorate), and Tunisia (37 samples from Beja, Bizerte, Ariana, and Manouba Governorates). Total DNA was extracted for all collected samples using DNeasy Plant Mini Kit (Qiagen). Polymerase chain reaction (PCR)-mediated detection of ALCV was performed using My Taq Red DNA Polymerase (Bioline) according to the manufacturer's instructions and capulavirus-specific primers (Capula2F, GAGRAABTCGGACTTGGAKGT; and Capula4R, CAYCTYACTGYCTYGTCCA) designed to alignments of the 47 available whole genome sequences of capulaviruses to amplify a 267-nt fragment of the coat protein gene. Amplification conditions consisted of 95°C for 5 min, followed by 35 cycles of 1 min at 94°C, 1 min at 55°C, and 1 min at 72°C, and a final extension for 10 min at 72°C. PCR results revealed that 86 samples (37 from Jordan, 7 from Lebanon, 22 from Syria, and 20 from Tunisia) generated expected 267-nt amplicons. DNA of four samples that tested positive for ALCV (one from each country) were then used as a template for PCR amplification of the complete genome using the HotStarTaq Plus

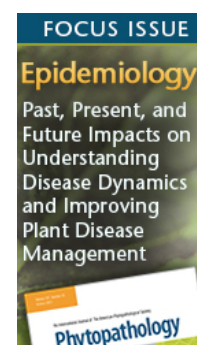
**Quick Links**
[Add to favorites](#)
[E-mail to a colleague](#)
[Alert me when new articles  
cite this article](#)
[Download to citation  
manager](#)
[Related articles  
found in APS Journals](#)
**Article History**

Issue Date: 17 Sep 2018

Published: 10 Aug 2018

First Look: 11 May 2018

Accepted: 4 May 2018

 Access provided by CIRAD  
Dist


Master Mix Kit (Qiagen) following the manufacturer's protocol and the pair of abutting primers (Cap-ncoIF and Cap-ncoIR) with a *NcoI* overlapping site as described in [Bernardo et al. \(2016\)](#). Amplification conditions consisted of 95°C for 5 min, 35 cycles at 94°C for 20 s, 60°C for 30 s, 68°C for 165 s, and 72°C for 3 min. The amplicons were gel purified using the PCR Clean-Up System (Promega), cloned into pGEM-T Easy (Promega) and Sanger sequenced by primer walking at Genewiz (South Plainfield, NJ). The four ALCV complete genome sequences that were obtained (GenBank accession nos. MH020803, isolate SyAl37-17 from Syria; MH020804, isolate TuAl16-17 from Tunisia; MH020805, isolate JoAl28-17 from Jordan; and MH020806, isolate LAI22-17 from Lebanon) ranged in size from 2,726 to 2,745 nt in length and shared 93.9 to 98.5%, 82.2 to 85.4%, and 83.4 to 84.1% genome-wide pairwise identity with ALCV strain A isolates from France, ALCV strain B isolates from France, and ALCV isolate Manfredi from Argentina, respectively ([Bejerman et al. 2018](#); [Bernardo et al. 2016](#)). In addition, the four isolates from Jordan, Lebanon, Syria, and Tunisia shared 94 to 97.1% genome-wide pairwise identity with each other. The genomes of these four isolates harbor a typical organization of ALCV isolates, including seven open reading frames and the nonanucleotide stem-loop sequence "TAATATTAC" in the intergenic region. These results indicate that ALCV is widely present in alfalfa in Lebanon, Tunisia, Jordan, and Syria. This is to our knowledge the first report of ALCV in these four countries.



## References:

Section: 

- Bejerman, N.**, et al. 2018. Arch. Virol. 163:799. <https://doi.org/10.1007/s00705-017-3673-x> [Crossref] [ISI] [Google Scholar]
- Bernardo, P.**, et al. 2016. Virology 493:142. <https://doi.org/10.1016/j.virol.2016.03.016> [Crossref] [ISI] [Google Scholar]
- Roumagnac, P.**, et al. 2015. J. Virol. 89:9683. <https://doi.org/10.1128/JVI.00453-15> [Crossref] [ISI] [Google Scholar]
- Susi, H.**, et al. 2017. Arch. Virol. 162:2041. <https://doi.org/10.1007/s00705-017-3298-0> [Crossref] [ISI] [Google Scholar]

## Citation