

The International Journal of Life Cycle Assessment

LCA and nutritional assessment of southern Benin market vegetable gardening across the production continuum

--Manuscript Draft--

Manuscript Number:	
Full Title:	LCA and nutritional assessment of southern Benin market vegetable gardening across the production continuum
Article Type:	Original Paper
Corresponding Author:	Angel Avadí, Ph.D. CIRAD Montpellier, Please choose a State FRANCE
Corresponding Author Secondary Information:	
Corresponding Author's Institution:	CIRAD
Corresponding Author's Secondary Institution:	
First Author:	Angel Avadí, Ph.D.
First Author Secondary Information:	
Order of Authors:	Angel Avadí, Ph.D. Nounagnon Richard Hodomihou, PhD Guillaume Lucien Amadji, PhD Frédéric Feder, PhD
Order of Authors Secondary Information:	
Funding Information:	
Abstract:	<p>Purpose. The goal of this work is to analyse the environmental impacts across the productive continuum of market gardening in southern Benin, to determine whether significant differences exist among the types of production, and to highlight their hotpots suitable to improvement. Moreover, the relative nutritional quality of products from different production system types are compared to determine whether there are differences and to assess them in relation to the associated environmental impacts.</p> <p>Methods. LCA and laboratory analyses were performed on a representative sample of systems and products (carrot, cucumber, tomato, lettuce, watermelon). The resulting scores (single scores for LCA and Nutrient Rich Food scores for nutritional quality) were statistically treated to identify the representativeness of their differences across production sites and types in the productive continuum (Conventional, Organic and "Lean" production strategies).</p> <p>Results and discussion. Statistically significant differences across environmental scores were found among production sites (for carrot, lettuce and all crops) and types (for carrot and all crops). For tomato, produced on all sites, under all production types, the natural and management-driven variability is large enough that no significant differences were found. Impacts are dominated by direct emissions from (over-)fertilisation and by fuel consumption for water pumping. Despite the absence of significant differences among production system types regarding the contents of both β-Carotene and polyphenols, the nutritional indices suggest at least marginal differences across types regarding the overall nutritional value of carrot and tomato across types. Based on the limited data available, it cannot be stated that such differences are statistically significant. For carrot, there seems to be a correlation between nutritional quality and environmental impacts, with higher nutritional scores associated with lower environmental impacts. For tomato, it does not seem to exist a correlation.</p> <p>Conclusions. Significant differences in environmental scores exist among the types of production, with the larger impact associated with Organic production, while that no</p>

	statistically significant differences on nutritional quality can be demonstrated across types. Overall improvement of these systems would be achieved by a more technically coherent fertilising strategy.
Suggested Reviewers:	Katerina Stylianou, PhD University of Michigan School of Public Health kstylian@umich.edu Expert in combining LCA with nutritional indices
	Marta Bianchi RISE Research Institutes of Sweden AB marta.angela.bianchi@ri.se Expert in combining nutritional indices and LCA
Opposed Reviewers:	

Click here to view linked References

LCA and nutritional assessment of southern Benin market vegetable gardening across the production continuum

Angel Avadí^{1, 2, 3, *}, Nounagnon Richard Hodomihou^{4, 5}, Guillaume Lucien Amadji⁴, Frédéric Feder^{1, 2, 5}

¹ CIRAD, UPR Recyclage et risque, F-34398 Montpellier, France

² Recyclage et risque, Univ Montpellier, CIRAD, Montpellier, France

³ ELSA, Research group for environmental life cycle sustainability assessment, Montpellier, France

⁴ Université d'Abomey-Calavi. Faculté des Sciences Agronomiques. Cotonou, Bénin

⁵ CIRAD, UPR Recyclage et risque. Laboratoire Mixte International IE SOL. 18524 Dakar, Sénégal

* Corresponding author: angel.avadi@cirad.fr, Tel.: +33 4 67 61 59 67

Abstract

Purpose. The goal of this work is to analyse the environmental impacts across the productive continuum of market gardening in southern Benin, to determine whether significant differences exist among the types of production, and to highlight their hotspots suitable to improvement. Moreover, the relative nutritional quality of products from different production system types are compared to determine whether there are differences and to assess them in relation to the associated environmental impacts.

Methods. LCA and laboratory analyses were performed on a representative sample of systems and products (carrot, cucumber, tomato, lettuce, watermelon). The resulting scores (single scores for LCA and Nutrient Rich Food scores for nutritional quality) were statistically treated to identify the representativeness of their differences across production sites and types in the productive continuum (Conventional, Organic and “Lean” production strategies).

Results and discussion. Statistically significant differences across environmental scores were found among production sites (for carrot, lettuce and all crops) and types (for carrot and all crops). For tomato, produced on all sites, under all production types, the natural and management-driven variability is large enough that no significant differences were found. Impacts are dominated by direct emissions from (over-)fertilisation and by fuel consumption for water pumping. Despite the absence of significant differences among production system types regarding the contents of both β -Carotene and polyphenols, the nutritional indices suggest at least marginal differences across types regarding the overall nutritional value of carrot and tomato across types. Based on the limited data available, it cannot be stated that such differences are statistically significant. For carrot, there seems to be a correlation between nutritional quality and environmental impacts, with higher nutritional scores associated with lower environmental impacts. For tomato, it does not seem to exist a correlation.

Conclusions. Significant differences in environmental scores exist among the types of production, with the larger impact associated with Organic production, while that no statistically significant differences on nutritional quality can be demonstrated across types. Overall improvement of these systems would be achieved by a more technically coherent fertilising strategy.

Keywords: Organic and conventional agriculture; organic fertiliser; market vegetables; nutritional indices

1 Introduction

1.1 Environmental assessment of organic vs. conventional agriculture in Africa

In sub-Saharan Africa, urban and peri-urban market gardening activities supply fresh vegetables to growing cities featuring consumers assigning increasing importance to these products (Chauvin et al. 2012; OCDE/FAO 2016). These activities can be conducted throughout the year depending on the climatological conditions and the pressure of pests. Production is dominated by smallholder —often family-managed— farms, favouring short circuits (Ahouangninou 2013; Gollin 2014). Smallholder production limits losses, waste generation and intermediaries, but lacks the benefits of economies of scale (Sarris and Morrison 2010; Gollin 2014). These productions are essential for diversifying the diet, providing nutrients and thus remedying the deficiencies that are prevalent in these regions (Sarris and Morrison 2010; FAO 2019a). Nevertheless, these crops require high amounts of fertilisation. The agronomic and climatic conditions (absence of plant cover, short crop cycle, pressure from pests, use of phytosanitary products, etc.) generate various environmental risks (Feder et al. 2015; Hodomihou et al. 2016). In southern Benin, among the intensified conventional market gardening areas, a so-called "lean" approach ("Agriculture raisonné" in French (Rosenberg and Gallot 2002)) has been developed to reduce both costs and the negative impact of chemical fertilisers and pesticides on the particularly sensitive ecosystem (sandy coastal soils, shallow groundwater). Moreover, a small number of organic production systems exist, which avoid the use of synthetic phytosanitary and fertilising substances. The benefits and environmental sustainability of the latter two system types are poorly quantified, compared to those of the conventional production.

Globally, several examples of LCA use to compare the environmental impacts of organic and conventional systems exist (e.g. de Boer 2003; Knudsen et al. 2014; Meier et al. 2015; Boone et al. 2019), yet only a few assess the statistical significance of differences among systems (e.g. Tuomisto et al. 2012). Literature reviews and statistical analyses have been performed to explore the nutritional differences among products from organic and conventional systems (e.g. Worthington 2001; Popa et al. 2019). No comparative environmental assessment of organic and conventional production has been published to date on African vegetable systems.

The goal of this work is to analyse the environmental impacts across the productive continuum of market gardening in southern Benin, to determine whether statistically significant differences exist among the types of production, and to highlight their hotspots suitable to improvement. The nutritional positive and negative implications of the different production types are also explored, to confirm or challenge literature on the subject suggesting that there is no solid evidence that organic and conventional products differ in terms of concentrations of various nutrients (Bourn and Prescott 2002; Mie et al. 2017; Popa et al. 2019).

1.2 Market gardening in southern Benin

There are four main production communes devoted to market gardening in southern Benin (Fig. 1): Grand-Popo, Ouidah, Cotonou and Sèmè-Kpodji. A more detailed mapping of surveyed systems is available in the Supplementary Material.

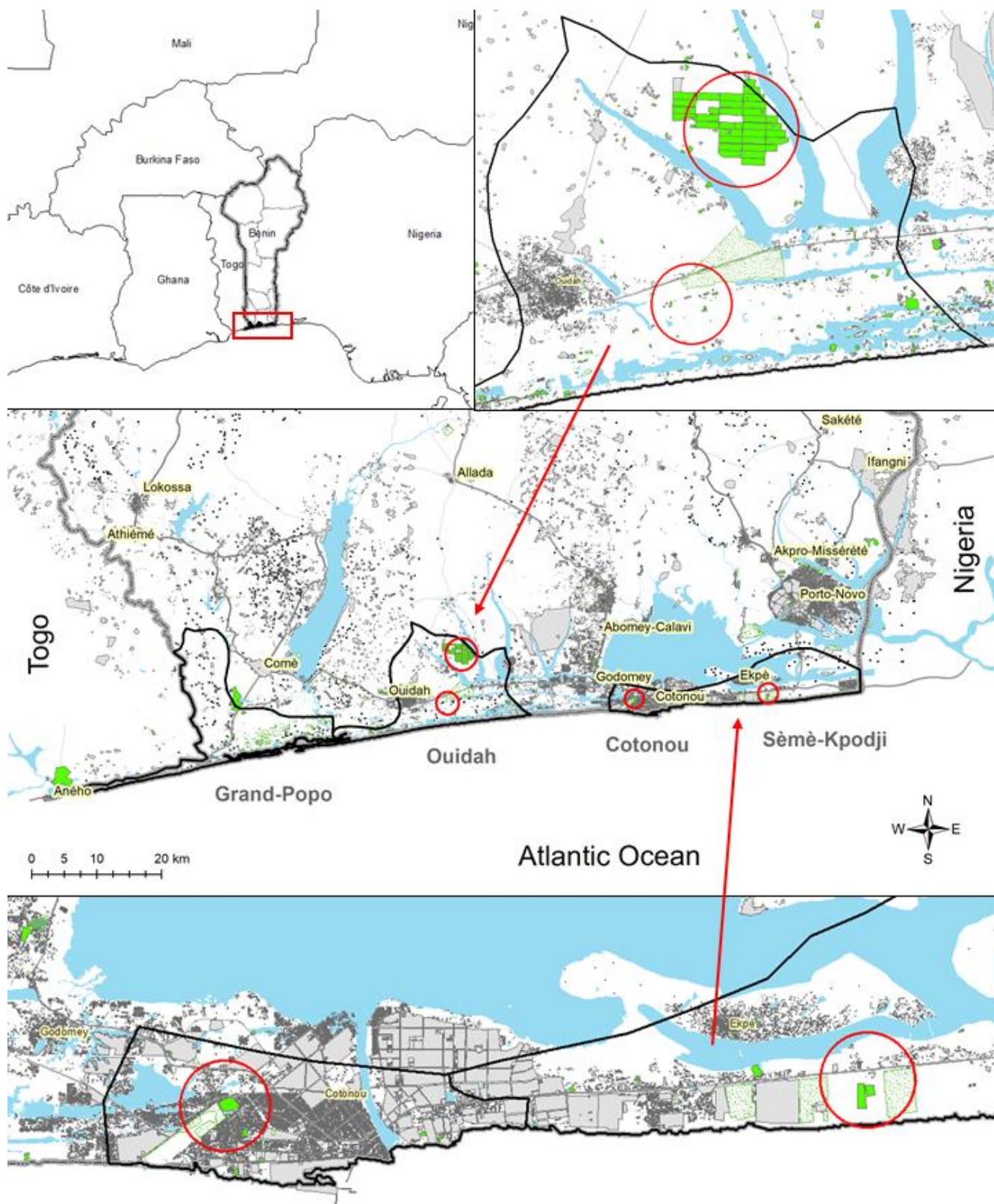


Fig. 1. Geographical location of southern Benin vegetable gardening

Beninese market gardening is an eminently manual activity (i.e., not mechanised), the vast majority of which is carried out by human labour. One exception that is beginning to become widespread is irrigation. Although the majority of producers use manual irrigation, simple sprinkler irrigation systems are increasingly being used by

the most successful producers (as this requires significant investment in pipes, pumps, etc.). *A priori*, three distinguishable types of production systems exist, according with their inputs strategy.

Conventional vegetable systems dominate the production continuum, and are based on the use of organic and/or mineral fertilisers and synthetic chemical pesticides (Akogbeto and Noukpo 2005; Ahouangninou et al. 2011). To optimise crop yields in most of these systems located on sandy soils in the southern Benin coastal sedimentary basin, organic and/or mineral over-fertilisation and inappropriate or excessive use of pesticides are often observed. These uncontrolled farming practices generate risks of contamination of soil, vegetables, groundwater and surface water by nitrates, pesticide residues and trace elements (Agbossou et al. 2003; Atidegla and Euloge 2010; Yehouenou et al. 2010; Atidegla et al. 2011; Ahouangninou et al. 2013; Perrin et al. 2015).

“Lean” market gardening systems aim at reconciling the optimisation of productivity with environmental preservation, by controlling the quantities of inputs, in particular chemical fertilisers and phytosanitary products (Ahouangninou 2013). In theory, market gardeners only apply phytosanitary treatments when necessary, at the right time and with the right dose and equipment.

Organic vegetable production systems use natural inputs, such as organic fertilisers and biopesticides, while excluding the use of chemical fertilisers and pesticides (Ahouangninou 2013). They are based on production methods that are close to natural biological cycles, while practicing a rational management of technical routes: recycling of organic materials (compost and animal waste such as poultry droppings and cattle dung), crop rotation/associations and biological control. These systems are practiced by few producers in southern Benin, due to the many constraints encountered during production: difficulties in accessing organic seeds, difficulties related to organic fertiliser sources and quality, pest management methods that are sometimes restrictive for the farmer, low yields under certain conditions, limitations in market access, and the often too long and expensive certification process. Most of the market gardeners who have adopted the organic system belong to the Association pour le Maintien de l'Agriculture Paysanne (AMAP-Bénin) network. This association brings together organic vegetable producers certified by the Participative Guarantee System (GSP), consumers and processors. GSPs are quality assurance systems, awarded locally by the Federation of Producers' Unions of Benin (FUPRO-BENIN) to certify producers on the basis of active participation of the stakeholders concerned, and are built on a basis of trust, networks and knowledge exchange. Thus, consumers and producers agree on the agronomic methods to be used in compliance with the charter of peasant agriculture and the organic market gardening specifications.

2 Material and methods

2.1 Goal and scope

The boundaries of the LCA study include the provision of agricultural inputs, the crop of interest and its related emissions (Fig. 2). The production of inputs, and the distribution of vegetable products, are excluded, as the LCA features a cradle-to-farm gate scope.

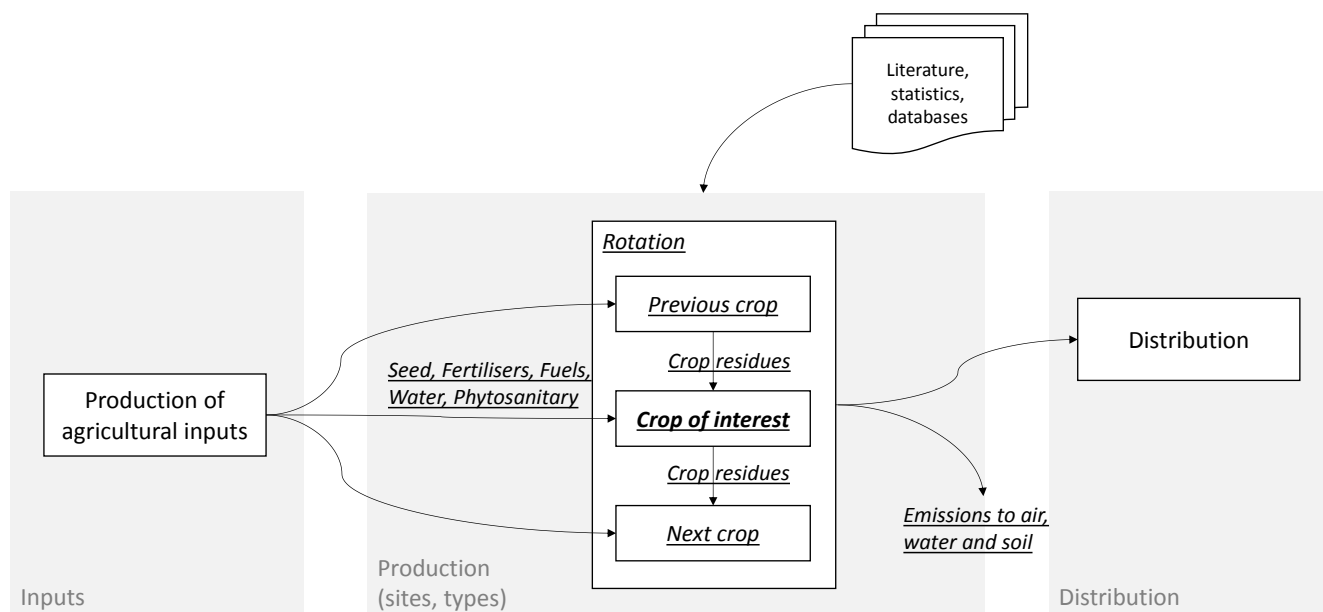


Fig. 2. System boundaries of the southern Benin market vegetable gardening LCA (included elements are underlined)

To construct the life cycle inventories, primary data were collected by means of surveys administered to producers in three of the four main market vegetable gardening communes of southern Benin (sites). At each site, a sample of farms was surveyed, at the level of the production unit, where each production unit corresponds to a crop of interest associated with a specific producer, a production type, and a site. Production types were defined *a priori* as Conventional, Lean and Organic (see 3.1), yet the study focused on the production continuum, as one of the objectives was to confirm or disprove this *a priori* classification. Production sites were also identified *a priori*, based on their urban and peri-urban settings: Houéyiho, Ouidah and Sèmè-Kpodji (see details on the Supplementary Material). The data obtained represent the production of the year 2018, in the non-rainy season (e.g. outside the drainage period).

Inventories and impacts were computed per production unit, and then aggregated per crop, per type of production and per site. Means of impacts were computed for each aggregation of production units.

In agricultural systems, especially when comparing different types of production (e.g. organic vs. conventional), it is advisable to use contrasting functional units, which express the impacts of production in mass and area units (Meier et al. 2015; Salou et al. 2016). Therefore, we have selected 1 t of product and 1 ha of production as functional units.

2.2 Life cycle inventories

All relevant agricultural inputs and emissions were taken into account, but agricultural infrastructure and equipment were excluded, as their impacts in non-mechanised agricultural activity are negligible.

The effects and impacts of fertilisers should be reasoned at the crop rotation scale (Nemecek et al. 2001; Brankatschk and Finkbeiner 2015; Liao et al. 2015; Koch and Salou 2016), especially in a context of short cycles (the tropical vegetable cycle lasts between 1 and 4 months), and when contrasting different types of agricultural production systems (Meier et al. 2015). Therefore, inventories were constructed for each production unit, but taking into account previous and subsequent crops in the rotation for the estimation of direct field emissions (Fig. 2), for which the AGRIBALYSE v1.3 (Koch and Salou 2016) methodology was used, except for nitrogen emissions, for which the Indigo-N v2.7 (Bockstaller and Girardin 2010) method, more

suitable for tropical environments (after adaptations on the rainy periods), was retained. The estimation of direct emissions was informed by laboratory analyses on samples of soil, irrigation water and organic fertilisers.

Background data was taken from AGRIBALYSE v1.3 and ecoinvent v3.4. Suitable proxies were used when specific background processes were not available. For instance, transport of agricultural inputs was modelled as EURO3 transport by 3.5-7.5 t lorries (despite the bulk of African transportation systems being either not standardised or pollution standards not enforced), the provision of all seeds was modelled as the ecoinvent process carrot seed (with mass adjusted according to each crop's seed weight), and various phytosanitary molecules such as acetamiprid, abamectin and emamectin benzoate were modelled as ecoinvent generic inorganic chemicals.

As we focused on individual crops, and disregarded associated crops, no allocation of impacts between co-products was necessary, except for the allocation of fertilisers and their impacts (i.e. direct emissions) among crops in a rotation. This allocation is based on biophysical criteria, and was made by calculating direct nitrogen emissions with Indigo-N.

2.3 Life cycle impact assessment

The impact assessment was based on the ILCD 2011 Midpoint+ v1.0.9 method, May 2016 (EC-JRC 2012), broadly aligned with the recent recommendations of the European Commission on the environmental footprint of products (Product Environmental Footprint - PEF, see Annex 4) (EC 2018). ILCD 2011 includes a single score, but no aggregation into protection areas, so the weighting is set at 1 per impact category. It includes USEtox (Rosenbaum et al. 2008; Fantke et al. 2017), the consensus toxicity model, to calculate all toxicity impact categories. An adjustment was made to the model: the characterisation factor for climate change of "CO₂ in air" was changed from -1 to 0, because we considered that the CO₂ in air absorbed by plants and reemitted in the short term, as is the case for annual crops, does not represent carbon sequestration.

SimaPro v8.5.5.2 was used to calculate the impacts. In order to find eventual significant differences across mean impacts among crops, sites, and especially types of production, the results were statistically processed with the R v3.5 software. Multiple Tukey's pairwise comparisons were made, by crop and crop variety, by site, and by production type.

2.4 Nutritional comparison

The relative nutritional value of vegetables produced across sites and production types was computed by means of a nutritional index inspired by the Nutrient Rich Food index (Drewnowski and Fulgoni 2008). The computation of these indices was informed by laboratory analyses on vegetable samples. The index subtracts the anti-nutritional features of food from their nutritional features. Both sets of features are computed as the arithmetic mean of each considered nutrient divided by a reference value (100 g) and, in the case of NRF_n, scaled by the foodstuff's energy density in kcal/g (Darmon et al. 2005, 2009). Computations are defined by Eq. 1 to Eq. 3 (Drewnowski and Fulgoni 2008; Drewnowski et al. 2009):

$$\text{Nutrient Rich Food (NRF}_n\text{)} = (\sum_{i=1}^n ((\text{Nutrient/Daily Values}) * 100)/n)/\text{Energy Density} \quad \text{Eq. 1}$$

$$\text{Limited nutrients score (LIM}_m\text{)} = \sum_{i=1}^m ((\text{Daily Amount/Maximum Recommended Values}) * 100)/m)/100 \text{ g} \quad \text{Eq. 2}$$

$$\text{Nutrient Rich Food (NRF}_{n,m}\text{)} = \text{NRF}_n - \text{LIM}_m \quad \text{Eq. 3}$$

where *Nutrient* refers to the amount of a nutrient in the foodstuff, *Daily Values* are recommended daily intakes for each nutrient, and *Energy Density* is the foodstuff's energy content in kcal; *Daily Amount* represents the intake of a nutrient to limit per 100 g of foodstuff, and *Maximum Recommended Values* are recommendations of maximum daily intakes per nutrient to limit.

In this case, desired nutrients include trace elements (Ca, Fe, Mn, Zn), vitamins (A and B-12), antioxidants —e.g. polyphenols, despite their role in human health being somewhat disputed and no intake recommendations existing to date (Martin 2009; Pérez-Jiménez et al. 2010; Joubert and Gelderblom 2016; Cory et al. 2018; Del Bo et al. 2019; W. 2019; Truzzi et al. 2020)— and dietary fibre. Nutrients to limit include toxic trace elements (Pb, Cd, As) beyond intake limits recommendations (as vegetables lack the classic triad of nutrients to limit: added sugar, sodium and saturated fatty acids (Darmon et al. 2009)), and “excess” polyphenols content beyond a quasi-reference value of 500 mg/day associated with a healthy diet that includes five portions of fruits and vegetables per day (Martin 2009).

Nutritional differences among products were analysed with 1-way and 2-way ANOVA tests to determine the significance at the $p = 0.001$ level.

2.5 Laboratory analyses

Soil samples, taken for each production unit, were analysed in the Soil Science Laboratory of the faculty of agronomic sciences at the University of Abomey-Calavi (FSA-UAC), in Benin, to determine pH, total C and N content, organic matter and mineral N content, particle size analysis (clay, silt, and sand), electrical conductivity, and soil available water capacity were also measured. Additional analyses were conducted at the Analytical Means Laboratory (LAMA) of the IRD (Development Research Institute) in Dakar, for trace element contents in soil.

The organic amendment and fertiliser samples, taken for each site, were analysed in the LAMA, to determine their total N, mineral N, P, K and trace element contents.

Samples of irrigation water, taken for each site, were analysed to determine the contents of nitrates and phosphates (Laboratory of Soil, Water and Environmental Sciences of the National Agricultural Research Institute of Benin - LSSEE/INRAB), and certain pesticides such as lambda-cyhalothrin (Central Food Safety Control Laboratory - LCCSSA).

Vegetable (plant) samples, taken for each production unit, were analysed in the FSA-UAC to determine their levels of Ca, Fe, Mn and Zn, as well as residues of the pesticide lambda-cyhalothrin. Further analyses were conducted in France (SGS France) to determine vegetable samples' contents of β -Carotene (as a precursor to vitamin A; test: Visible HPLC), vitamin B12 (test: ME340 HPLC) and polyphenols (as Gallic acid, test: Folin-Ciocalteu).

3 Results and discussion

3.1 The market vegetable gardening production continuum of southern Benin

3.1.1 Characteristics of studied sites

From a climatic point of view, the market gardening areas of southern Benin are under the influence of the sub-equatorial climate, of the Guinean type, characterised by four more or less marked seasons of unequal duration (Boko 1988), namely: a long dry season from mid-November to mid-March, a great rainy season from

mid-March to mid-July, a small dry season from mid-July to mid-September, and a short rainy season from mid-September to mid-November.

Rainfall is relatively high, averaging 1200 mm per year. The rainfall regime is bimodal, with peaks observed in the months of June and October respectively for both rainy seasons. The average temperature is 27°C, varying from 24 to 30°C in the rainy season and from 23 to 33°C in the dry season. The differences between the hottest and the coldest month do not exceed 4°C. The monthly relative humidity varies between 75 and 90%.

From a geological and pedological point of view, the market gardening perimeters of southern Benin are located on the coastal sedimentary basin which is situated on the edge of the Atlantic Ocean and groups together two topographical sub-units: the coastal plain and the “terre de barre” —ferrallitic, slightly desaturated clayey-sandy soils (Azontondé 1993)— plateaux south of the Lama depression. The dominant soils for market gardening are found in the coastal plain and are sandy soils called raw mineral soils, consisting of fine sands, low in organic matter, highly permeable and well drained.

The dominant soils in southern Benin are sandy, moderately acid, and feature low contents of organic matter (Table 1).

Table 1. Results of southern Benin soil analyses

Parameter	Unit	Sèmè-Kpodji	Houéyiho	Ouidah
pH water	unitless	6.53	7.40	5.95
pH KCl	unitless	6.10	7.10	5.42
C organic	g/100 g	1.05	1.30	0.93
N total	g/100 g	0.07	0.12	0.09
C/N	unitless	15.54	11.55	10.23
Organic matter	g/100 g	1.82	2.24	1.60
N-NH ₄ ⁺	ppm	3.64	3.87	3.67
N-NO ₃ ⁻	ppm	4.77	8.69	6.44
N mineral (ammonium + nitrates)	ppm	8.41	12.55	10.12
Conductivity	μS/cm	0.34	0.16	0.21
Clay	%	4.88	6.42	8.02
Silt	%	3.82	3.83	3.75
Sand	%	90.81	89.37	87.73
Texture		Sandy	Sandy	Sandy
Available water capacity (mm/cm) across sites: 1.12±0.15				

From a hydrogeological point of view, the water table is shallow (less than 1 m in places in Cotonou, and between 1 and 6 metres in southern Benin), and is therefore highly influenced by rainwater and leachate, leading to contamination of groundwater by pollutants of all kinds (Atidegla and Euloge 2010). The very low altitude areas correspond to swamps, which are the convergence axes of surface water, hypodermic (subsurface) flows and groundwater.

Phosphate and nitrate contents of the (borehole) irrigation water collected in the Houéyiho perimeter (46±11 and 126±25.7 mg/L respectively) are significantly (p-value < 0.05) higher than those of Sèmè-Kpodji (3.5±1.8 and 59.3±17.3 mg/L respectively) and Ouidah (3.8±0.9 and 31.3±10.3 mg/L respectively). The standard deviations correspond to differences among measured values per site. By comparing the average nitrate contents of the borehole waters of these market gardening perimeters with the maximum allowed in drinking water, which is 50 mg/L (WHO 2011), it can be seen that the nitrate contents of the waters of Houéyiho and Sèmè-Kpodji are higher than this standard. Assogba-Komlan et al. (2007) reported that over-fertilisation in the

market gardening perimeters of the coastal basin of southern Benin increases the risks of groundwater pollution by nitrates due to the sandy texture of the soils which are highly filtering. The phosphate and nitrate contents measured in this study are much higher than those obtained in 2011 by Ahouangninou (2013), thus indicating an increase in nitrate and phosphate pollution over time.

As for the analyses of lambda-cyhalothrin pesticide residues in these waters, the results obtained in all the perimeters are always below the detection limit, indicating no trace of contamination in pesticide in these irrigation waters. These results confirm those obtained by Ahouangninou (2013), who reported that the irrigation water in these areas does not contain pesticide residues. Irrigation waters were not analysed for trace elements, but it is expected that their content of such contaminants would be rather high (Koumolou et al. 2013; Djouaka et al. 2016).

3.1.2 Fertilisation

Numerous studies on fertilisation practices in market gardening in southern Benin have shown that high doses of organic and mineral fertilisers are applied to market gardening soils (Assogba-Komlan et al. 2007; Atidegla et al. 2011; Perrin et al. 2014). Doses of organic matter such as poultry droppings and cottonseed residues above 40 t/ha/cycle, and mineral fertilisers such as urea and NPK above 600 kg/ha/cycle, have been reported as common occurrence for vegetables such as *Solanum macrocarpum* (Assogba-Komlan et al. 2007). These high application rates of organic and mineral fertilisers have little influence on vegetable yields on sandy soils in the southern Benin coastal sedimentary basin, but generate clear environmental risks (Assogba-Komlan et al. 2007; Perrin 2013; Perrin et al. 2014). A recent article (Atidegla et al. 2018) states that all producers over-fertilise, as they exceed the recommended 400 kg/ha mineral fertiliser rate by up to 300%. In addition, the article claims that only 21% of market gardeners comply with the recommended rate of 20 t/ha of poultry droppings.

According with our surveys, the most common organic fertiliser used in southern Benin is poultry droppings. These have variable characteristics (e.g. N and C content) and its trace element content is considerably higher than that of poultry droppings used in France (Supplementary Material). We determined via analyses a mean N content of 1.89%DM, with a 9.5% humidity content.

Over-fertilisation of market vegetables was noted via our surveys, notably in Conventional systems, but not in the orders of magnitude reported in the literature. We found mean inputs 8.0 t organic fertilisers/ha and 170 kg mineral N fertilisers/ha in Conventional systems (for a total input of ~300 kg N/ha), 2.5 t/ha organic and 64 kg/ha mineral in Lean systems (~104 kg N/ha), and 14.0 t/ha organic and 0 kg/ha mineral in Organic systems (~225 kg N/ha). The N demands of vegetables are in the order of 170-400 kg N/ha for tomato, 120-170 for carrot, 50-80 for lettuce and 160 for curcubitaceae (Neuweiler and Krauss 2017). See section 3.3 for fertiliser and other inputs per crop, site and production type.

3.1.3 Phytosanitary control

Our surveys explored the use of phytosanitary substances. To manage pests on vegetable crops in southern Benin, producers generally use chemical pesticides in Conventional systems, and chemical (e.g. Laser 480SC) or local (e.g. plant-based) biopesticides in Lean or Organic systems.

In Conventional market gardening, more than 24 commercial chemical pesticide preparations are used by growers (Akogbeto and Noukpo 2005; Ahouangninou et al. 2011, 2013; Agnandji et al. 2018), to combat a variety of pests (Table 2). The majority of these identified pesticides are emulsifiable concentrates belonging to the families of organophosphates, pyrethroids, carbamates and benzimidazoles. The fungicides identified are

wettable powder formulations. Nematicides such as carbofuran have also been identified. Several authors have reported that most of these insecticide formulations used by vegetable growers are not suitable for the protection of vegetable crops, but are recommended and registered for cotton pest control (Agbossou et al. 2003; Assogba-Komlan et al. 2007; Azandeme-Hounmalon et al. 2014). For instance, Azandeme-Hounmalon et al. (2014) found that 65% of market gardeners use cotton insecticides containing lambda-cyhalothrin and profenofos, at doses that vary from one market garden to another. Some farmers use it in high doses with the intention of improving the effectiveness of crop protection, while other market gardeners mix several formulations such as lambda-cyhalothrin, profenofos and deltamethrin, without respecting the recommended doses, as noted via our surveys. Similarly, the frequency of crop treatments varies greatly among market gardeners. The primary objective of market gardeners is to increase productivity and financial profitability, in general at the expense of the environment and human health. This profitability drive does not take into account ecological costs and all the negative externalities of chemical input use.

Table 2. Crops grown by market gardeners, their main threatening pest, and the main pesticide used

Crop	Scientific name	Main pest	Main commercial pesticide
Amaranth	<i>Amaranthus cruentus</i> L.	<i>Heliothis recurvalis</i> L.	Acarius 18 EC
Aubergine	<i>Solanum melongena</i> L.	<i>Bemisia tabaci</i> G.	Cypercal P 330 EC
Lettuce	<i>Lactuca sativa</i> L.	<i>Bremia lactucae</i> R.	Emacot Fort
Cabbage	<i>Brassica oleracea</i> var. capitata L.	<i>Mycosphaerella brassicicola</i> S.	Laser 480 SC
Tomato	<i>Lycopersicon esculentum</i> Mil.	<i>Phytophthora</i> sp M.	Pacha 25 EC
Beet	<i>Beta vulgaris</i> L.	<i>Pegomyia betae</i> C.	Dursban B-200/18 EC
Vernonia	<i>Vernonia amygdalina</i> D.	<i>Sphaerocoris annulus</i> F.	Lambdocal P 630
African eggplant (Grande morelle)	<i>Solanum macrocarpum</i> L.	<i>Spodoptera frugiperda</i> S.	Tihan 1760-TEQ
Great basil	<i>Ocimum basilicum</i> L.	<i>Aphis gossypii</i> G.	Coga 80 WP
Carrot	<i>Daucus carota</i> L.	<i>Psila rosae</i> F.	Lambdocal P 630
Cucumber	<i>Cucumis savitus</i> L.	<i>Acalymma vittatum</i> F.	Tihan 1760-TEQ
Pepper	<i>Capsicum</i> sp.	<i>Lygus lineolaris</i> P.	Dursban B-200/18 EC
Turnip	<i>Brassica rapa</i> L.	<i>Pieris napi</i> L.	Pacha 25 EC

Source : Agnandji et al. (2018)

In Lean or Organic market gardening, producers use alternative control methods that present fewer risks. These include the use of plant extracts such as Neem (*Azadirachta indica*), *Hyptis suaveolens* and *Carica papaya*, which are locally manufactured (Coulibaly et al. 2008; CORAF 2010), as noted via our surveys. The objective of introducing these biopesticides into vegetable production systems is to control crop pests while respecting ecological principles, human health and the environment. The use of biopesticides in crop pest control is considered an integral part of a sustainable production system, but their use remains very limited (Adékambi et al. 2010). Although biopesticides are less dangerous to agroecosystems and reduce the risk of residues in the food produced, some products have a slower onset of action or require a specific environment to be effective and could also have an impact on non-target organisms used in biocontrol (Birch et al. 2011).

Analysis results suggest levels below the detection limit of 10 µg/kg for pesticide residues in all vegetable samples.

3.1.4 Other practices

Our surveys made it possible to identify strategies for controlling pests through the implementation of crop rotations and associations. Specific crop rotation practices are also deployed as good pest control strategies on

Lean/Organic vegetable systems. These practices generally involve alternating between crop cycles, crops attacked by different groups of pests or crops that use different layers of the soil. For example, lettuce-amaranth-carrot, tomato-amaranth-leaf-vernonia, spiny turnip-amaranth-carrot, great nightshade-amaranth-leaf rotations are observed. Crops such as turnips, radishes and amaranth often precede nematode sensitive crops such as tomatoes, lettuce, and *Cucurbitaceae* (cucumber, zucchini, melon, watermelon). Vernonia (*Vernonia amygdalina*) is a plant with little parasite and low nutrient requirements, so it is often placed at the end of rotation to interrupt the cycle of certain pests.

In addition to climatic conditions, the factor favouring the practice of market gardening in the coastal sedimentary basin of southern Benin is the easy accessibility to groundwater of acceptable quality and unsalted, due to the shallow depth of the water table, which facilitates the construction of traditional wells or boreholes. The irrigation methods used are traditional, as note via our surveys in line with a previous report by Atidegla et al. (2011), using with watering cans (5%) and improved systems (95%) based on the use of internal combustion or electric pumps for water extraction and pipes for the distribution of pressurised water to plants through sprinklers.

As confirmed by our surveys, market gardening products are manually harvested. Harvesting and product distribution or sale strategies vary according to the crop.

3.2 Nutritional comparison

Mean content of trace nutrients and contaminants (trace elements) in tomato and carrot are often different from each other but are not ordered identically according to the three agronomic modalities (Table 3). Contents of vitamin B12 were consistently $<0.3 \mu\text{g}/100 \text{ g}$. For carrots, the contents of β -Carotene and polyphenols are higher for lean management; the organic modality always has the lowest contents. This order is reversed for zinc contents. For β -Carotene and polyphenols, Ryan-Joiner normality tests were conducted, with positive results. A 2-way ANOVA allowed to conclude that, for polyphenols, there were significant differences among carrots and tomatoes, while no significant differences existed for β -Carotene. For both crops, 1-way ANOVAs revealed no significant differences among production system types for both β -Carotene and polyphenols.

Analyses conducted to determine trace elements levels in vegetable samples, were not comprehensive, as the focus of vegetable analyses was on desirable nutrients. Therefore, analyses were conducted to measure Ca, Fe, Mn, and Zn (micro-nutrients) for all vegetables, but Pb, Cd, and As (contaminants) were measured for tomato only. Based on the fact that no significant differences in nutrient contents across production types, and that all systems are exposed to the same sources of contamination of trace elements to cultivated soil (e.g. irrigation water (Koumolou et al. 2013; Djouaka et al. 2016), location close to garbage dumps and intensive traffic, as well as poor agricultural practices regarding fertilisers and pesticides (Atidegla 2018)), values from reference literature were retained for Pb, Cd, and As for vegetables other than tomato. Data for carrot (Djouaka et al. 2016) correspond to southern Benin —Koumolou et al. (2013) data were not retained due to aberrant values for As, likely due to the chosen analytical methods. All retained values are presented in Table 3.

Table 3. Mean content of trace nutrients and contaminants (trace elements) in tomato and carrot samples from southern Benin

	/100 g	Carrot			Tomato		
		Organic	Conventional	Lean	Organic	Conventional	Lean
DM	g	8.9	8.9	8.9	5.5	5.5	5.5

Dietary fibre	g	3.2 ^a	3.2 ^a	3.2 ^a	1.4 ^a	1.4 ^a	1.4 ^a
Polyphenols	mg	762	896	1 537	1 720	2 691	2 565
β-Carotene	µg	3 313	4 028	6 040	2 922	3 633	3 255
Vitamin B12	µg	<0.3	<0.3	<0.3	<0.3	<0.3	<0.3
Ca	mg	25.37	31.57	26.20	11.97	13.95	9.46
Fe	mg	2.37	3.91	2.52	3.40	3.46	2.97
Mn	mg	4.01	1.39	2.60	0.73	0.76	0.69
Zn	mg	6.21	4.83	4.65	2.51	2.33	2.30
Pb	mg	3.68E-3 ^b	3.68E-3 ^b	3.68E-3 ^b	1.35E-02	8.89E-01	4.45E-01 ^c
Cd	mg	6.40E-4 ^b	6.40E-4 ^b	6.40E-4 ^b	1.01E-01	7.52E-02	6.33E-02
As	mg	1.00E-6 ^b	1.00E-6 ^b	1.00E-6 ^b	1.21E-02	7.59E-03	4.22E-03

Notes: ^a values taken from Vincent et al. (2020), ^b values taken from Djouaka et al. (2016), ^c value estimated as half of that for Conventional, because measurements were below detection limits. DM: dry matter

Based on the reference values listed in Table 4, and the nutrients and contaminants values detailed in Table 3, we computed the nutritional indices as depicted in Fig. 3 ($NRF_{8.4} = NRF_8 - LIM_4$). For NRF_8 and $NRF_{8.4}$, the larger the index, the better nutrition delivered. For LIM_4 , the smaller the index, the lower negative contribution of substances to limit. Lean carrots and Organic tomatoes feature the highest nutritional scores for each crop, mostly driven by higher β-Carotene content (carrots) and lower Pb content (tomatoes).

Table 4. Reference intake values for trace nutrients and contaminants (trace elements)

	Unit/day	MRV ^a	DV ^b
Dietary fibre	g		30
Polyphenols	mg		500 ^c
β-Carotene	µg		700
Vitamin B12	µg		2.4
Ca	mg		900
Fe	mg		12.5
Mn	mg		390
Zn	mg		11
Pb	mg	0.3	
Cd	mg	0.05	
As	mg	0.1	

Sources: ^a Koumolou et al. (2013) and FAO/WHO (2015), ^b Maillot et al. (2007), ^c Martin (2009). Energy densities of carrot and tomato were determined at 34 and 22 kcal/100 g, respectively, following Vincent et al. (2020). MRV: daily Maximum Recommended Values, DV: Daily Values

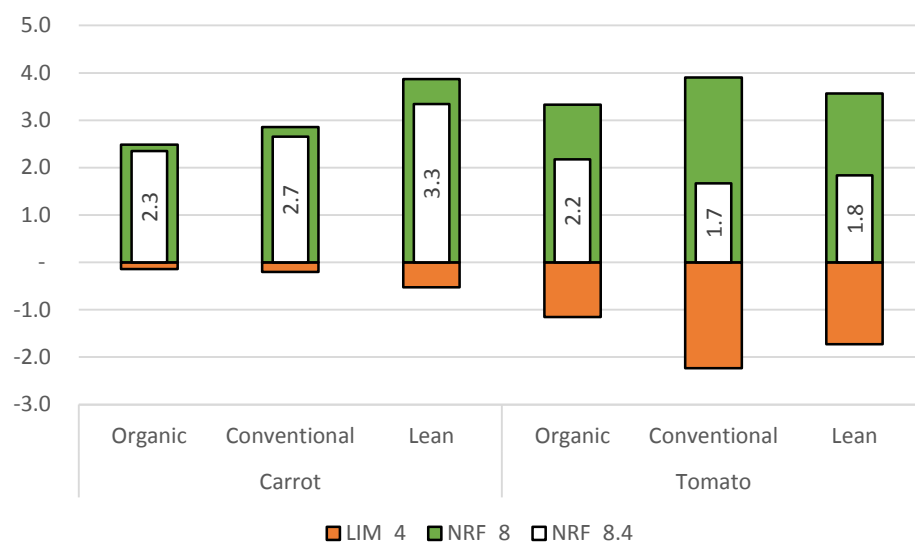


Fig. 3. Nutritional indices (Nutrient Rich Food and LIMited nutrients score) for southern Benin carrot and tomato

3.3 Life cycle inventories

Primary data were collected for three sites: Houéyiho (Cotonou), Ouidah and Sèmè-Kpodji. The crops for which primary data were collected are carrots (Ca), tomatoes (To), leafy vegetables such as lettuce (Lf), and the curcubitaceae cucumber and watermelon (Cu) (see survey distributions across sites, production types and crops in the Supplementary Material). The rotations practiced at these sites are very diverse, but the most common are the successions Lf → Lf → Lf → Lf and Lf → Ca/Cu/To → Lf. A few fallow reversals were also observed.

Direct N emissions, which are considered to be among the most significant contributors to agricultural LCA impacts, differed among sites, crops and production types. For instance, N emissions from Conventional crops in Sèmè-Kpodji appear to be the highest, except for nitrate fluxes, which are highest in Ouidah (Table 5). Nitrate leaching losses appear to be close to zero in most cases, which is compatible with measurements in dry tropical environments (Diallo et al. 2019). In humid tropical environments, since the soil texture is sandy and the crops studied occur outside the drainage season, the estimated values appear to be correct (Feder et al. 2015).

Based on the inputs of fertilisers and phytosanitary products (Table 5), there appear to be differences in intensity between sites, crops and production types. For instance, the intensity of synthetic fertilisers use in Conventional crops is higher for Ouidah, and that of organic fertiliser is higher for Sèmè-Kpodji. The intensity of phytosanitary measures is higher for Organic products in Sèmè-Kpodji, and this site has the highest input intensity for all crops and types.

Table 5. Mean values for fertiliser, yields, phytosanitary inputs to and direct N emissions from market vegetable gardening products from southern Benin, per site and production type, computed with Indigo-N v2.7 over the crop rotation

	Houéyiho	Ouidah				Sèmè-Kpodji		
	Convention al	All types	Organic	Conventio nal	Lean	All types	Organic	Conventio nal
Emission (kg/ha)								
NH ₃	25.25	35.62	50.21	49.02	5.89	60.13	50.38	68.49
N ₂ O	4.21	5.86	8.06	8.12	1.16	10.10	9.14	10.91

NOx	0.88	1.23	1.69	1.71	0.24	2.12	1.92	2.29
NO ₃	1.37	2.04	2.38	2.00	1.65	1.02	0.42	1.53
Inputs per ha								
Mineral fertilisers (kg)	152	77	0	196	64	86	0	160
Organic fertilisers ^a (kg)	3 831	7 659	11 380	8 403	2 452	14 118	16 716	11 892
Phytosanitary substances (g)	7 988	3 099	4 093	4 367	756	65 596	133 637	7 275
Yields (t/ha)	32.6	13.3	11.4	17.9	11.4	21.9	20.1	22.3

^a“Organic fertilisers” include organic amendments

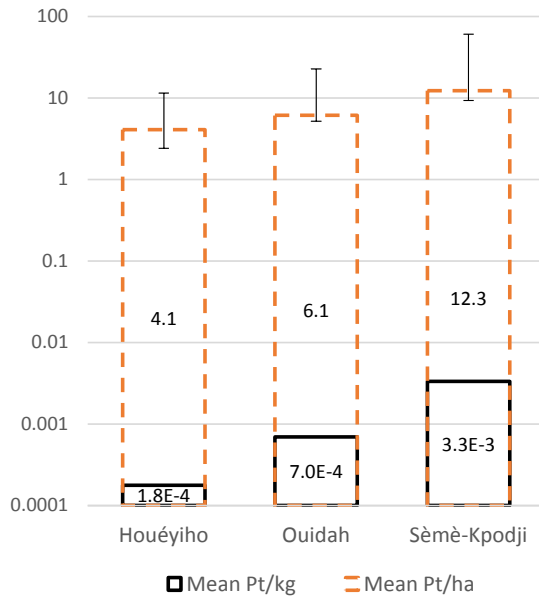
Detailed inventories per production unit, including disaggregated yields, are presented in the Supplementary Material. Yields in Benin are within West African orders of magnitude, while the yield gap between organic and conventional production is within the global estimated gap of 80% (de Ponti et al. 2012). For instance, Benin Conventional tomato yields reach in average 6.0 t/ha, Lean 2.2 t/ha and Organic 9.5 t/ha, while FAOSTAT (FAO 2019b) 2018 reported mean yields in Western Africa reached 7.2 t/ha in and in the whole of Africa 16.1 t/ha (the latter driven by much higher yields in northern and southern Africa).

3.4 Life cycle impact assessment

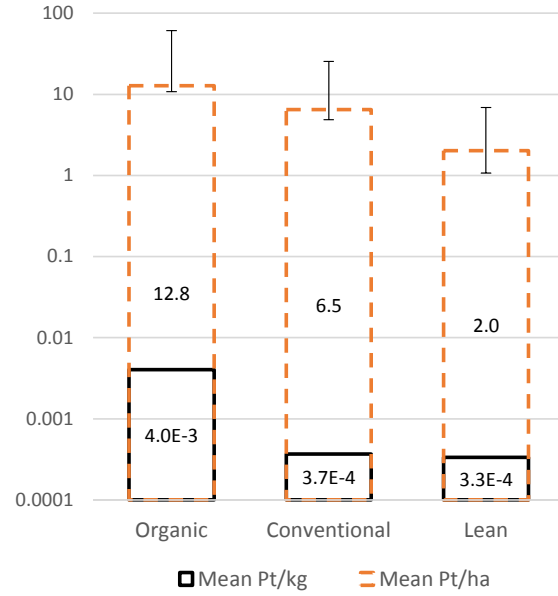
3.4.1 Endpoints

By analysing the results by single score (i.e., all impact categories), differences between sites and types are noticeable, with Organic crops and products from Sèmè-Kpodji having systematically higher impacts, both per kg of produce and per ha of cultivation (Fig. 4). For all crops and sites combined, Organic production features the highest scores (Fig. 4c). The impact per kg of products is ten times higher than for the Conventional and Lean production. However, per ha, the impact of Organic is lower: twice as high as for Conventional and six times higher than for Lean. Finally, per kg of products, Lean and Conventional production feature similar scores. On the other hand, per ha, impacts are three times higher for Conventional than for Lean production. Organic production have different impacts for the two concerned sites. Per kg of products, impacts are five times higher in Sèmè-Kpodji than in Ouidah. However, per ha, it is only 1.8 times higher. For all crops and all sites combined, the conventional production shows small differences among the three sites. Per kg of products and per ha, the score in Houéyiho is 2 to 3 times lower than in Sèmè-Kpodji, while Ouidah features intermediate scores. Lean production cannot be properly compared across sites, as it has only been studied at Ouidah. However, it has the lowest score per ha, while per kg of product, its score is twice as high as that of conventional production in Houéyiho, the lowest of all. All crops combined, the score averages per site show significant differences: 3 to 20 times higher in Sème-Kpodji than in Houyiho respectively per ha and per kg of products. However, not all the production type studied is present at each site, which reduces the relevance of a comparison of averages.

a) All crops, per site



b) All crops, per type



c) All crops, per site and type

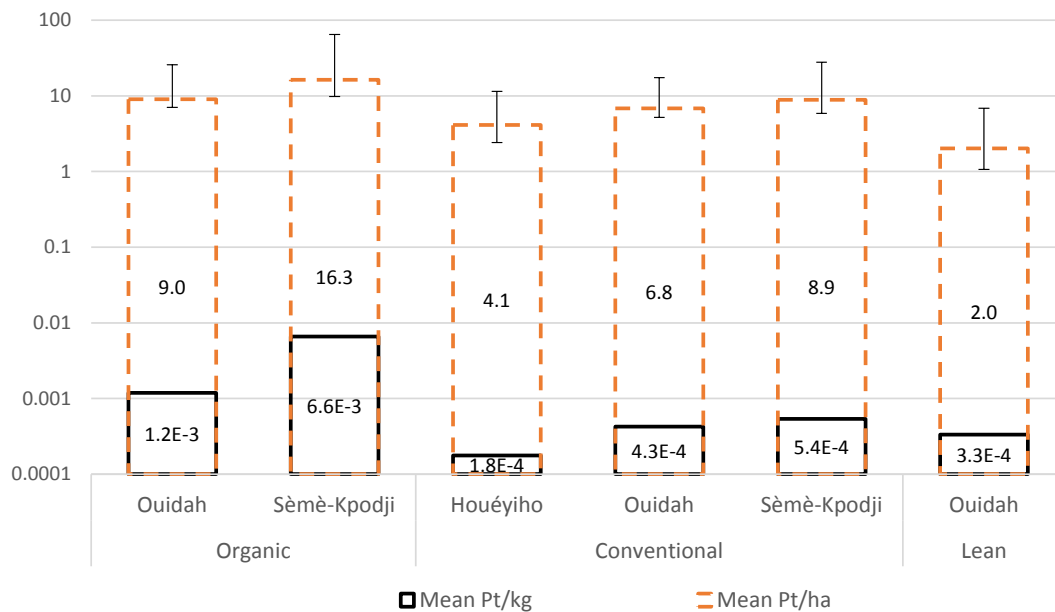


Fig. 4. Mean impacts (single ILCD score, in Pt) of the sites and production types of four market vegetable gardening products in southern Benin, per kg of product and per ha of crop (error bars represent the variation among production unit values contributing to the mean)

Statistical processing of the results allows preliminary findings to be refined, taking into account the variability among production units (see R outputs for Tukey's pairwise comparisons per crop, fertilisation type and site in the Supplementary Material):

- For carrot, there are significant differences between the impacts of Organic vs. Conventional and Lean, but not between Conventional and Lean. There are furthermore significant differences between the aggregated impacts of the products from Sèmè-Kpodji and Houéyiho. An outlier value has been identified in Houéyiho: a carrot production unit without organic matter inputs.

- For tomatoes, there are no significant differences between the impacts, either by type, by site, and even by variety, despite an Organic outlier in Sèmè-Kpodji featuring very high organic matter inputs, and three Organic tomato production units, also in Sèmè-Kpodji, with very low yields, intended for self-consumption.
 - For cucumber, there are no significant differences in impacts, either by type, by site, or even by variety, despite the outlier value of a Conventional unit at Sèmè-Kpodji with low organic matter inputs.
 - For lettuce, there are significant differences between the aggregate impacts of Houéyiho products and other sites, but not between Organic and Conventional impacts.
 - For watermelon, there are no significant differences between impacts by type (data available for a single site).
 - For all crops, there are significant differences between the impacts of Organic vs. Conventional and Lean, but not between Conventional and Lean. There are moreover significant differences between the aggregate impacts of Sèmè-Kpodji's products and other sites, due to the high organic matter inputs featured by several production units.
 - For each crop and for the all production units, no correlation between yields and impacts was found,
- Conclusions

The statistical propagation of data uncertainty was not possible because we did not obtain sufficient uncertainty data. Nevertheless, contribution analyses per production type were carried out. For instance, for tomatoes, the impacts of Conventional and Organic are dominated by direct field emissions (nitrogen and trace elements). For Organic production, the contribution of fuels is slightly lower, but the overall distribution of contributions remains similar. Moreover, there are few differences between self-consumption and commercial production. Impacts of Lean systems are dominated by fuel consumption (e.g. for irrigation), due to the lower contribution of fertilisation (Fig. 5).

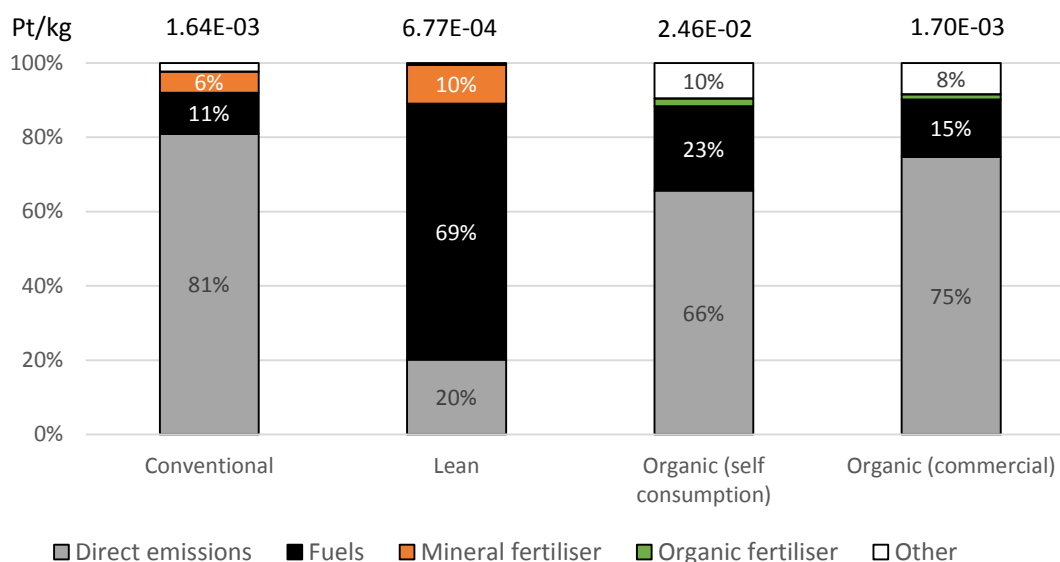


Fig. 5. Contribution analysis of tomato, based on the single ILCD score per kg of product, all sites combined

In addition, the sensitivity of impacts to inputs can be illustrated by the comparison between Lean and Conventional tomatoes, whose input intensity is reduced for the former, and shows lower impacts than the latter (Fig. 6). All sites combined, the yields per hectare of Lean tomato production were 4 times lower than in conventional production. However, the impacts were 8 times and 2 times less per hectare and per quantity of

product respectively. The impacts of the different nitrogen emissions have always been very low for Lean production since they represented at most 5% of those of conventional production. Similarly, in Lean production, the absence of the use of phytosanitary substances and the use of three times less mineral fertilisers have contributed to significantly lower impacts per hectare.

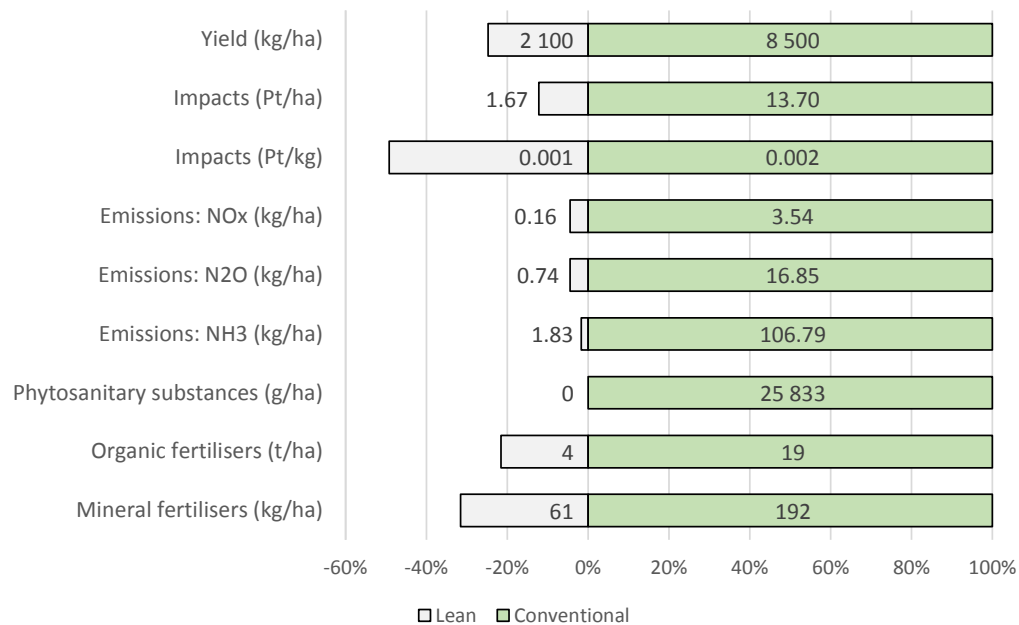


Fig. 6. Comparisons of the inputs and impacts of Lean vs. Conventional tomato, all sites combined (values in the left side of the X axis represent positive percentages of values in the right side)

3.4.2 Midpoints and comparison with other studies

When the environmental impacts are expressed as midpoints, such as kg CO₂-eq for climate change, they vary noticeably among production types and sites. These impacts are related to input intensities, particularly fertilisation. Detailed midpoint scores per production unit are presented in the Supplementary Material.

A contribution analyses on four key impact categories, at the midpoint level, shows that the dominant contributors to impacts vary according with the specific impact category: energy for climate change (Fig. 7a), direct field emissions for eutrophication (Fig. 7b) and acidification (Fig. 7c), and a combination of pesticides, mineral fertilisers, energy and direct field emissions for freshwater ecotoxicity (Fig. 7d). Lean production showed a lower overall impact regarding energy for climate change (Fig. 7a) than conventional and organic production per hectare. A rational use of mineral fertilisers in Lean production had a lower impact than organic-only fertilisation; this despite higher impacts for energy use in Lean production (92.4%) than in organic production (60.4%). Nevertheless, the comparison of the sites between them showed a more heterogeneous and complex situation, since the Houéyiho site, with conventional production only, presented slightly less impact than the Sèmè-Kpodji site, which mixed conventional and organic production. It was the impact of organic fertilization that changed this order. The impact on freshwater eutrophication (Fig. 7b) showed the same distribution. Thus, Lean production showed the lowest impacts and conventional production the highest impacts, but it was the Sèmè-Kpodji site that had the highest impacts. Apart from the impact of mineral fertilisers, it was all the other varied impacts that changed the order. The impacts on acidification (Fig. 7c), and on freshwater ecotoxicity (Fig. 7d) followed the same order. Lean production had significantly lower impacts

than conventional and organic production. The latter had the highest impacts because of organic fertilizers and direct emissions (for acidification), direct emissions and other non-detailed factors (for freshwater ecotoxicity).

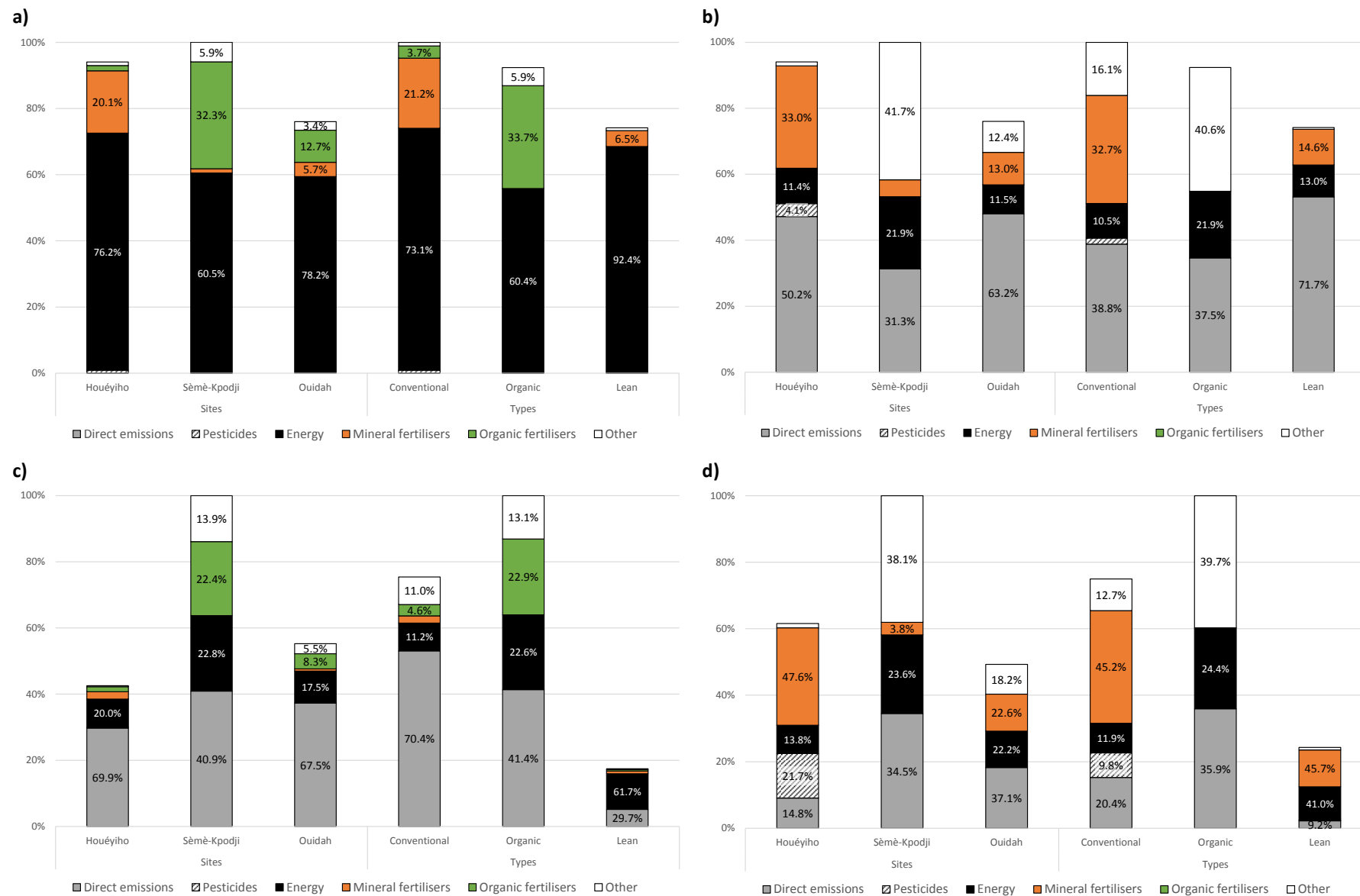


Fig. 7. Contribution analysis of all crops, per ha of cultivation, per sites and types, for a) climate change, b) freshwater eutrophication, c) acidification and d) freshwater ecotoxicity

Our results suggest consistently higher climate change impacts for Organic production per kg of product and for Conventional production per ha of crop. *A priori*, we speculated that these results are due to lower yields and high quantities of organic fertilisers used in organic market gardening. The high impacts of Sèmè-Kpodji's organic tomatoes are due to the fact that several production units are not commercial, but systems intended for self-consumption, with very low yields.

Few LCA studies have focused on African vegetable production. A comparison of the climate change results of this study with overall results reported in the literature suggests that the impacts of market vegetable gardening in southern Benin (average of all products and types ranging from 0.21 for Houéyiho to 2.56 for Sèmè-Kpodji, with an average of 1.24 kg CO₂-eq/kg produced) are in the same order of magnitude as other values reported for vegetable crops (Table 6). For example, Perrin (2013) estimated 3.08 kg CO₂-eq per kg of conventional Beninese off-season tomatoes, while we found a value (mean of Conventional and Lean, comparable with systems in Perrin (2013)) of 1.32 kg CO₂-eq per kg of seasonal tomatoes.

Table 6. Comparison of the impacts of climate change reported in the literature

Products (at farm gate)	Countries, regions	Climate change (kg CO ₂ -eq/kg product)	Source
<i>Brassicae</i> (cabbage, etc.)	Global	0.57	Clune et al. (2017)
Carrot	Global	0.19	Clune et al. (2017)
Carrot (Conventional)	Benin	0.30	This study
Cucumber	Global	0.72	Clune et al. (2017)
Cucumber (Conventional)	Benin	0.41	This study
Field vegetables (average of Conventional, Organic and Lean)	Benin	1.24	This study
Field vegetables (Conventional)	Benin	0.35	This study
Green beans	Kenya	0.57	Basset-Mens et al. (2019)
Leafy vegetables	Global	0.80	Clune et al. (2017)
Lettuce	Global	0.81	Clune et al. (2017)
Lettuce	Benin	0.16	This study
Tomato	Europe	0.89	Perrin (2013)
Tomato	Global	1.23	Clune et al. (2017)
Tomato (off-season)	Benin	3.08	Perrin (2013)
Tomato (seasonal, average of Conventional and Lean)	Benin	1.32	This study
Tomato (seasonal, average of Conventional, Organic and Lean)	Benin	4.73	This study
Tomato (seasonal, Conventional)	Benin	0.89	This study
Tomato under unheated greenhouse	Morocco	0.22	Payen et al. (2015)
Vegetables under heated greenhouse	Europe	2.03 – 2.12	Perrin (2013)
Watermelon	Australia	0.38	Clune et al. (2017)
Watermelon (conventional)	Benin	0.08	This study

An environmental and economic study on market vegetable gardening in the Niayes region of Senegal found that conventional systems are more profitable than organic ones, due to lower yields of the latter and the minor size of the organic food market (Binta and Barbier 2015). It also found that land use is similar, if relatively higher for the conventional systems, and that GHG emissions are higher as well for the conventional systems. The situation in Benin seems to be very similar.

3.5 Interpretation

Statistically significant differences were found among production sites (for carrot, lettuce, and all crops) and types of production (for carrot, and all crops). For crops such as tomato, produced on all sites, under all production types, and using multiple crop varieties, the natural and management-driven variability is large enough that no significant differences were found. It can be stated that, based on the whole sample of production units (representative of the population of southern Benin producers, according with local experts from the University of Abomey-Calavi), organic production and production carried out at Sèmè-Kpodji feature higher impacts per both mass and area-based functional units.

Several hotspots were identified, per site and per production type, but also for the overall southern Benin vegetable market gardening activity. For instance, the input of mineral fertilisers and organic matter to soils is generally high, yet among the 69 production units inventoried, only two exceeded the recommended dose for mineral fertiliser and five that for organic fertiliser. At any rate, impacts are dominated by direct emissions from fertilisation and by fuel consumption for water pumping.

Despite the absence of significant differences among production system types regarding the contents of both β -Carotene and polyphenols, the nutritional indices depicted in Fig. 3 suggest at least marginal differences across types regarding the overall nutritional value of carrot and tomato across types. Based on the limited data available, it cannot be stated that such differences are statistically significant.

For carrot, there seems to be a correlation between nutritional quality and environmental impacts, with higher nutritional scores associated with lower environmental impacts (Fig. 8). For tomato, it does not seem to exist a correlation.

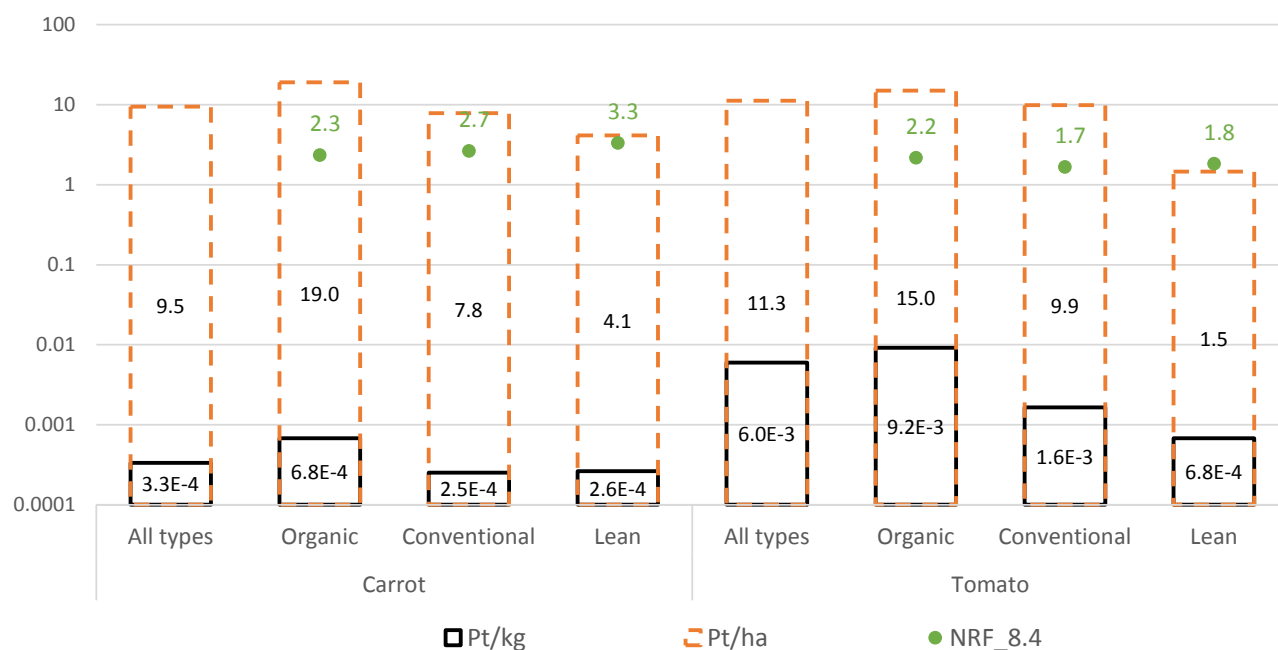


Fig. 8. Mean impacts (single ILCD score, in Pt) across sites of southern Benin carrot and tomato, per kg of product and per ha of crop, contrasted with their associated nutritional indices (NRF_{8.4} = Nutrient Rich Food - Limited nutrients score)

4 Conclusions

Based on the environmental and nutritional analyses conducted across the productive continuum of market gardening in southern Benin, which we consider representative of the southern Benin market vegetables

production sector, we were able to determine that significant differences existed among the types of production. The larger environmental impacts were associated with Organic production, driven by high inputs and low yields, while no statistically significant differences on nutritional quality could be demonstrated across types of production. Environmental impacts are dominated by direct emissions from fertilisation (associated with over-fertilisation) and by fuel consumption for water pumping. In general, impacts are within the same orders of magnitude of comparable values from other African and global systems, within the limits imposed by pedoclimatic conditions. Nutritional scores are dominated by high levels of β -Carotene and polyphenols, while contents of toxic trace elements remain below recommended limits.

Overall improvement of these systems would be achieved by a more technically coherent fertilising strategy, because over-fertilisation is prevalent (by means of poorly understood organic amendments and fertilisers) while yields are not higher than the mean yields for Africa. In the African context, it has been suggested that technical efficiency increases with farm size (e.g. Srinivasulu et al. 2015), but other strategies for smallholders have been as well proposed to promote yield increase, such as conservation agriculture (e.g. Thierfelder et al. 2013) and more effective fertilisers (e.g. designed, enriched) and fertilising strategies (e.g. dosage, combinations, timing, application technology) (e.g. Bindraban et al. 2015).

Acknowledgements

The authors were financed by the INRA-CIRAD research programme GloFoodS (<https://www.inrae.fr/actualites/securite-alimentaire-mondiale-glofoods-devoile-ses-resultats>). We thank all our colleagues and students for their contribution to the research synthesised in this work. We acknowledge the Analytical Means Laboratory (LAMA) of the International Mixed Laboratory Ecological Intensification of Cultivated Soils in West Africa, in Dakar (<https://imago.ird.fr/moyens-analytiques/dakar>).

References

- Adékambi SA, Adégbola PY, A. A (2010) Famers's perception and agricultural technology. The case of botanical extracts and biopesticides in vegetable production in Benin. In: Third African Association of Agricultural Economists (AAAE) and 48th Agricultural Economists Association of South Africa (AEASA) Conference, Cape Town, South Africa, September 19-23, 2010
- Agbossou KEE, Sanny MSS, Zokpodo B, et al (2003) Evaluation qualitative de quelques légumes sur le périmètre maraîcher de Houéyiho, à Cotonou au sud-Bénin. Bull la Rech Agron du Bénin 1–12
- Agnandji P, Cachon BF, Atindehou M, et al (2018) Analyse des pratiques phytosanitaires en maraîchage dans les zones intra- urbaines (Cotonou) et péri-urbaines (Sèmè-kpodji) au Sud-Bénin. Rev Africaine d'Environnement d'Agriculture 1:2–11
- Ahouangninou C, Fayomi BE, Martin T (2011) Évaluation des risques sanitaires et environnementaux des pratiques phytosanitaires des producteurs maraîchers dans la commune rurale de Tori-Bossito (Sud-Bénin). Cah Agric 20:216–222
- Ahouangninou C, Martin T, Assogba-komlan F, et al (2013) Using Aedes aegypti larvae to Assess Pesticide Contamination of Soil, Groundwater and Vegetables. Br Biotechnol J 3:143–157
- Ahouangninou CCA (2013) Durabilité de la production maraîchère au Sud-Bénin : un essai de l'approche écosystemique. Université d'Abomey-Calavi
- Akogbeto MC, Noukpo RDH (2005) Utilisation des insecticides agricoles au Bénin. Bull la Société Pathol Exot 98:400–405
- Assogba-Komlan F, Anihouvi P, Achigan E, et al (2007) Pratiques culturales et teneur en éléments anti

nutritionnels (nitrates et pesticides) du *Solanum macrocarpum* au sud du Bénin. *African J Food Agric Nutr Dev* 7:

Atidegla CS, Euloge K (2010) Pollutions chimique et bactériologique des eaux souterraines des exploitations maraîchères irriguées de la commune de Grand-Popo : cas des nitrates et bactéries fécales. *Int J Biol Chem Sci* 4:327–337

Atidegla SC (2018) Metallic contamination of vegetables: causes and approach of solutions through environmental education. *MOJ Biol Med* 3:30–35. <https://doi.org/10.15406/mojbm.2018.03.00072>

Atidegla SC, Agbossou EK, Huat J, Kakai RG (2011) Contamination métallique des légumes des périmètres maraîchers urbains et péri urbains : Cas de la commune de Grand – Popo au Bénin. *Int J Biol Chem Sci* 5:2351–2361

Atidegla SC, Bonou W, Agbossou EK (2018) Relations entre perceptions des producteurs et surfertilisation en maraichage urbain et péri urbain au Bénin. *Int J Biol Chem Sci* 11:2106. <https://doi.org/10.4314/ijbcs.v11i5.14>

Azandeme-Hounmalon G-Y, Affognon H-D, Assogba-Komlan F, et al (2014) Comportement des maraîchers face à l'invasion de *Tetranychus evansi* Baker & Pritchard au Sud du Bénin. In: AFPP – Dixième Conférence Internationale sur les Ravageurs en Agriculture, Montpellier, 22 et 23 octobre 2014

Azontondé A (1993) Dégradation et restauration des terres de barre (sols ferrallitiques faiblement desaturés argilo-sableux) au Bénin. *Cah - ORSTOM, Ser Pedol* 28:217–226

Basset-Mens C, Edewa A, Gentil C (2019) An LCA of French Beans from Kenya for Decision-makers. *Indones Jouna LCA Sustain* 1:1–11

Bindraban PS, Dimkpa C, Nagarajan L, et al (2015) Revisiting fertilisers and fertilisation strategies for improved nutrient uptake by plants. *Biol Fertil Soils* 51:897–911. <https://doi.org/10.1007/s00374-015-1039-7>

Binta BAA, Barbier B (2015) Economic and Environmental Performances of Organic Farming System Compared to Conventional Farming System: A Case Study of the Horticulture Sector in the Niayes Region of Senegal. *Procedia Environ Sci* 29:17–19. <https://doi.org/10.1016/j.proenv.2015.07.132>

Birch ANE, Begg GS, Squire GR (2011) How agro-ecological research helps to address food security issues under new IPM and pesticide reduction policies for global crop production systems. *J Exp Bot* 62:3251–3261. <https://doi.org/10.1093/jxb/err064>

Bockstaller C, Girardin P (2010) Mode de calcul des indicateurs agri-environnementaux de la méthode Indigo®. Colmar: INRA

Boko M (1988) Climats et communautés rurales du Bénin : rythmes climatiques et rythmes de développement. Université de Bourgogne

Boone L, Roldán-Ruiz I, Van linden V, et al (2019) Environmental sustainability of conventional and organic farming: Accounting for ecosystem services in life cycle assessment. *Sci Total Environ* 695:133841. <https://doi.org/10.1016/j.scitotenv.2019.133841>

Bourn D, Prescott J (2002) A comparison of the nutritional value, sensory qualities, and food safety of organically and conventionally produced foods. *Crit Rev Food Sci Nutr* 42:1–34. <https://doi.org/10.1080/10408690290825439>

Brankatschk G, Finkbeiner M (2015) Modeling crop rotation in agricultural LCAs - Challenges and potential solutions. *Agric Syst* 138:66–76. <https://doi.org/10.1016/j.agsy.2015.05.008>

Chauvin ND, Mulangu F, Porto G (2012) Food Production and Consumption Trends in Sub-Saharan Africa: Prospects for the Transformation of the Agricultural Sector

- 1
2
3 Clune S, Crossin E, Verghese K (2015) Systematic review of greenhouse gas emissions for different fresh food
4 categories. *J Clean Prod* 140:766–783. <https://doi.org/10.1016/j.jclepro.2016.04.082>
5
6 CORAF (2010) Cultures maraîchères : des extraits végétaux à la place des insecticides de synthèse. *Lett*
7 *d'Information pour la Rech le Développement Agric en Afrique l'Ouest du Cent* 56:1–16
8
9 Cory H, Passarelli S, Szeto J, et al (2018) The Role of Polyphenols in Human Health and Food Systems: A Mini-
10 Review. *Front Nutr* 5:1–9. <https://doi.org/10.3389/fnut.2018.00087>
11
12 Coulibaly O, Cherry AJ, Nouhoheflin T, et al (2008) Vegetable Producer Perceptions and Willingness to Pay for
13 Biopesticides. *J Veg Sci* 12:. <https://doi.org/10.1300/J484v12n03>
14
15 Darmon N, Darmon M, Maillot M, Drewnowski A (2005) A nutrient density standard for vegetables and fruits:
16 Nutrients per calorie and nutrients per unit cost. *J Am Diet Assoc* 105:1881–1887.
17 <https://doi.org/10.1016/j.jada.2005.09.005>
18
19 Darmon N, Vieux F, Maillot M, et al (2009) Nutrient profiles discriminate between foods according to their
20 contribution to nutritionally adequate diets: A validation study using linear programming and the
21 SAIN, LIM system. *Am J Clin Nutr* 89:1227–1236. <https://doi.org/10.3945/ajcn.2008.26465>
22
23 de Boer IJM (2003) Environmental impact assessment of conventional and organic milk production. *Livest Prod*
24 *Sci* 80:69–77. [https://doi.org/10.1016/S0301-6226\(02\)00322-6](https://doi.org/10.1016/S0301-6226(02)00322-6)
25
26 de Ponti T, Rijk B, Van Ittersum MK (2012) The crop yield gap between organic and conventional agriculture.
27 *Agric Syst* 108:1–9. <https://doi.org/10.1016/j.agsy.2011.12.004>
28
29 Del Bo C, Bernardi S, Marino M, et al (2019) Systematic Review on Polyphenol Intake and Health Outcomes: Is
30 there Sufficient Evidence to Define a Health-Promoting Polyphenol-Rich Dietary Pattern? *Nutrients* 11:.
31 <https://doi.org/10.3390/nu11061355>
32
33 Diallo F, Masse D, Diarra K, Feder F (2019) Impact of organic fertilisation on lettuce biomass production
34 according to the cultivation duration in tropical soils. *Acta Agric Scand Sect B — Soil Plant Sci* 0:1–9.
35 <https://doi.org/10.1080/09064710.2019.1702715>
36
37 Djouaka R, Zeukeng F, Soglo MF, et al (2016) Heavy metal contamination and fecal coliforms in peri-urban
38 market gardening sites in Benin and Cameroon. *Int J Agric Environ Res* 2:2455–6939
39
40 Drewnowski A, Fulgoni V (2008) Nutrient profiling of foods: creating a nutrient-rich food index. *Nutr Rev* 66:23–
41 39. <https://doi.org/10.1111/j.1753-4887.2007.00003.x>
42
43 Drewnowski A, Maillot M, Darmon N (2009) Should nutrient profiles be based on 100g, 100 kcal or serving size?
44 *Eur J Clin Nutr* 63:898–904. <https://doi.org/10.1038/ejcn.2008.53>
45
46 EC-JRC (2012) Characterisation factors of the ILCD Recommended Life Cycle Impact Assessment methods.
47 Luxembourg: Publications Office of the European Union
48
49 EC (2018) Product Environmental Footprint Category Rules Guidance v6.3
50
51 Fantke P, Bijster M, Guignard C, et al (2017) USEtox® 2.0 Documentation (Version 1)
52
53 FAO/WHO (2015) General Standard for Contaminants and Toxins in Food and Feed (Codex Stan 193-1995).
54 *Codex Aliment* 51:39–54. <https://doi.org/10.1017/CBO9781107415324.004>
55
56 FAO (2019a) The State of Food and Agriculture 2019. Moving forward on food loss and waste reduction. Rome:
57 Food and Agriculture Organization of the United Nations
58
59 FAO (2019b) FAOSTAT Database
60
61 Feder F, Bochu V, Findeling A, Doelsch E (2015) Repeated pig manure applications modify nitrate and chloride
62 competition and fluxes in a Nitisol. *Sci Total Environ* 511:238–248.
63 <https://doi.org/10.1016/j.scitotenv.2014.12.059>
64
65

- Gollin D (2014) Smallholder agriculture in Africa: An overview and implications for policy. IIED Work Pap IIED, London 1–20
- Hodomihou NR, Feder F, Masse D, et al (2016) Diagnostic de contamination des agrosystèmes périurbains de Dakar par les éléments traces métalliques. *Biotechnol Agron Soc Environ* 20:397–407
- Joubert E, Gelderblom W (2016) Value of antioxidant capacity as relevant assessment tool for “ health benefits ” of fruit - understated or inflated ? *South African J Clin Nutr* 29:4–6.
<https://doi.org/10.1073/pnas.1422664112>
- Knudsen MT, Meyer-Aurich A, Olesen JE, et al (2014) Carbon footprints of crops from organic and conventional arable crop rotations - Using a life cycle assessment approach. *J Clean Prod* 64:609–618.
<https://doi.org/10.1016/j.jclepro.2013.07.009>
- Koch P, Salou T (2016) AGRIBALYSE ® : Rapport Méthodologique - Version 1.3. ART, INRA, ADEME
- Koumolou L, Edorh P, Montcho S, Aklirikou K (2013) Health-risk market garden production linked to heavy metals in irrigation water in Benin. *C R Biol* 336:278–283. <https://doi.org/10.1016/j.crv.2013.04.002>
- Liao W, Van Der Werf HMG, Salmon-Monviola J (2015) Improved Environmental Life Cycle Assessment of Crop Production at the Catchment Scale via a Process-Based Nitrogen Simulation Model. *Environ Sci Technol* 49:10790–10796. <https://doi.org/10.1021/acs.est.5b01347>
- Maillot M, Darmon N, Darmon M, et al (2007) Nutrient-Dense Food Groups Have High Energy Costs: An Econometric Approach to Nutrient Profiling. *J Nutr* 137:1815–1820.
<https://doi.org/10.1093/jn/137.7.1815>
- Martin KR (2009) Polyphenols as dietary supplements: A double-edged sword. *Nutr Diet Suppl* 1.
<https://doi.org/10.2147/nds.s6422>
- Meier MS, Stoessel F, Jungbluth N, et al (2015) Environmental impacts of organic and conventional agricultural products - Are the differences captured by life cycle assessment? *J Environ Manage* 149:193–208.
<https://doi.org/10.1016/j.jenvman.2014.10.006>
- Mie A, Andersen HR, Gunnarsson S, et al (2017) Human health implications of organic food and organic agriculture: A comprehensive review. *Environ Heal A Glob Access Sci Source* 16:1–22.
<https://doi.org/10.1186/s12940-017-0315-4>
- Ndinwa GCC, Mirsm A, Chukumah CO, et al (2014) Solanum Lycopersicum Leaves, Fruits and Soil Samples Collected From Asaba Metropolis, Southern Nigeria. *Can J Pure Appl Sci* 8:2715–2720
- Nemecek T, Frick C, Dubois D, Gaillard G (2001) Comparing farming systems at crop rotation level by LCA. In: Geerken T, Mattson B, Olsson P, Johansson E (eds) *Proceedings of the International Conference on LCA in Foods*, Gothenburg. SIK, VITO, Gothenburg, 65-69
- Neuweiler R, Krauss J (2017) Fertilisation des cultures maraîchères. *Principes Fertil des Cult Agric en Suisse* 8:166–182
- OCDE/FAO (2016) L’agriculture en Afrique subsaharienne : Perspectives et enjeux de la décennie à venir. In: *Perspectives agricoles de l’OCDE et de la FAO 2016-2025*. Éditions OCDE, Paris, pp 63–104
- Payen S, Basset-mens C, Perret S (2015) LCA of local and imported tomato: an energy and water trade-off. *J Clean Prod* 87:139–148. <https://doi.org/10.1016/j.jclepro.2014.10.007>
- Pérez-Jiménez J, Neveu V, Vos F, Scalbert A (2010) Identification of the 100 richest dietary sources of polyphenols: An application of the Phenol-Explorer database. *Eur J Clin Nutr* 64:S112–S120.
<https://doi.org/10.1038/ejcn.2010.221>
- Perrin A (2013) Evaluation environnementale des systèmes agricoles urbains en Afrique de l’Ouest :

1
2
3 Implications de la diversité des pratiques et de la variabilité des émissions d'azote dans l'Analyse du Cycle
4 de Vie de la tomate au Bénin. Sciences agricoles. AgroParisTech, 2013. Français

5
6 Perrin A, Basset-Mens C, Gabrielle B (2014) Life cycle assessment of vegetable products: A review focusing on
7 cropping systems diversity and the estimation of field emissions. *Int J Life Cycle Assess* 19:1247–1263.
8 <https://doi.org/10.1007/s11367-014-0724-3>
9

10 Perrin A, Basset-mens C, Huat J (2015) High environmental risk and low yield of urban tomato gardens in Benin.
11 *Agron Sustain Dev* 35:305–315. <https://doi.org/10.1007/s13593-014-0241-6>
12

13 Popa ME, Mitelut AC, Popa EE, et al (2019) Organic foods contribution to nutritional quality and value. *Trends*
14 *Food Sci Technol* 84:15–18. <https://doi.org/10.1016/j.tifs.2018.01.003>
15

16 Rosenbaum RK, Bachmann TM, Gold LS, et al (2008) USEtox—the UNEP-SETAC toxicity model: recommended
17 characterisation factors for human toxicity and freshwater ecotoxicity in life cycle impact assessment. *Int*
18 *J Life Cycle Assess* 13:532–546. <https://doi.org/10.1007/s11367-008-0038-4>
19

20 Rosenberg PE, Gallot J (2002) Référentiel de l'agriculture raisonnée. Arrêté du 30 avril 2002 relatif au
21 référentiel de l'agriculture raisonnée
22

23 Salou T, Le Mouël C, van der Werf HMG (2016) Environmental impacts of dairy system intensification: the
24 functional unit matters! *J Clean Prod* 1–10. <https://doi.org/10.1016/j.jclepro.2016.05.019>
25

26 Sarris A, Morrison J (2010) Food security in Africa: Market and trade policy for staple foods in Eastern and
27 Southern Africa. Rome: Food and Agriculture Organization of the United Nations
28

29 Srinivasulu R, Victor A-S, Daniel KK, et al (2015) Technical efficiency of traditional African vegetable production:
30 A case study of smallholders in Tanzania. *J Dev Agric Econ* 7:92–99.
31 <https://doi.org/10.5897/jdae2014.0606>
32

33 Thierfelder C, Mombeyarara T, Mango N, Rusinamhodzi L (2013) Integration of conservation agriculture in
34 smallholder farming systems of southern Africa: Identification of key entry points. *Int J Agric Sustain*
35 11:317–330. <https://doi.org/10.1080/14735903.2013.764222>
36

37 Truzzi F, Valerii MC, Tibaldi C, et al (2020) Are supplements safe? Effects of gallic and ferulic acids on in vitro
38 cell models. *Nutrients* 12:1–13. <https://doi.org/10.3390/nu12061591>
39

40 Tuomisto HL, Hodge ID, Riordan P, Macdonald DW (2012) Does organic farming reduce environmental impacts?
41 - A meta-analysis of European research. *J Environ Manage* 112:309–320.
42 <https://doi.org/10.1016/j.jenvman.2012.08.018>
43

44 Vincent A, Grande F, Compaoré E, et al (2020) FAO/INFOODS Food Composition Table for Western Africa
45 (2019). User Guide & Condensed Food Composition Table. Rome: Food and Agriculture Organization of
46 the United Nations
47

48 W. K (2019) Dietary polyphenols-important non-nutrients in the prevention of chronic noncommunicable
49 diseases. A systematic review. *Nutrients* 11:1–35
50

51 WHO (2011) Nitrate and nitrite in drinking-water. Background document for development of WHO Guidelines
52 for Drinking-water Quality. World Health Organization
53

54 Worthington V (2001) Nutritional quality of organic versus conventional fruits, vegetables, and grains. *J Altern*
55 *Complement Med* 7:161–173. <https://doi.org/10.1089/107555301750164244>
56

57 Yehouenou EAP, Soton A, Azocli D, et al (2010) Contamination du sol, de l'eau et des produits maraîchers par
58 des substances toxiques et des métaux lourds sur le site de Houéyiho (Cotonou) en République du Bénin.
59 *Int J Biol Chem Sci* 4:2160–2168
60
61
62
63
64
65

Figure captions

Fig. 2. System boundaries of the southern Benin market vegetable gardening LCA (included elements are underlined)

Fig. 1. Geographical location of southern Benin vegetable gardening

Fig. 3. Nutritional indices (Nutrient Rich Food and LIMited nutrients score) for southern Benin carrot and tomato

Fig. 4. Mean impacts (single ILCD score, in Pt) of the sites and production types of four market vegetable gardening products in southern Benin, per kg of product and per ha of crop (error bars represent the variation among production unit values contributing to the mean)

Fig. 5. Contribution analysis of tomato, based on the single ILCD score per kg of product, all sites combined

Fig. 6. Comparisons of the inputs and impacts of Lean vs. Conventional tomato, all sites combined (values in the left side of the X axis represent positive percentages of values in the right side)

Fig. 7. Contribution analysis of all crops, per ha of cultivation, per sites and types, for a) climate change, b) freshwater eutrophication, c) acidification and d) freshwater ecotoxicity

Fig. 8. Mean impacts (single ILCD score, in Pt) across sites of southern Benin carrot and tomato, per kg of product and per ha of crop, contrasted with their associated nutritional indices ($NRF_{8.4}$ = Nutrient Rich Food - LIMited nutrients score)

Figures for

LCA and nutritional assessment of southern Benin market vegetable gardening across the production continuum

Angel Avadí^{1, 2, 3, *}, Nounagnon Richard Hodomihou^{4, 5}, Guillaume Lucien Amadji⁴, Frédéric Feder^{1, 2, 5}

¹ CIRAD, UPR Recyclage et risque, F-34398 Montpellier, France

² Recyclage et risque, Univ Montpellier, CIRAD, Montpellier, France

³ ELSA, Research group for environmental life cycle sustainability assessment, Montpellier, France

⁴ Université d'Abomey-Calavi. Faculté des Sciences Agronomiques. Cotonou, Bénin

⁵ CIRAD, UPR Recyclage et risque. Laboratoire Mixte International IE SOL. 18524 Dakar, Sénégal

* Corresponding author: angel.avadi@cirad.fr, Tel.: +33 4 67 61 59 67

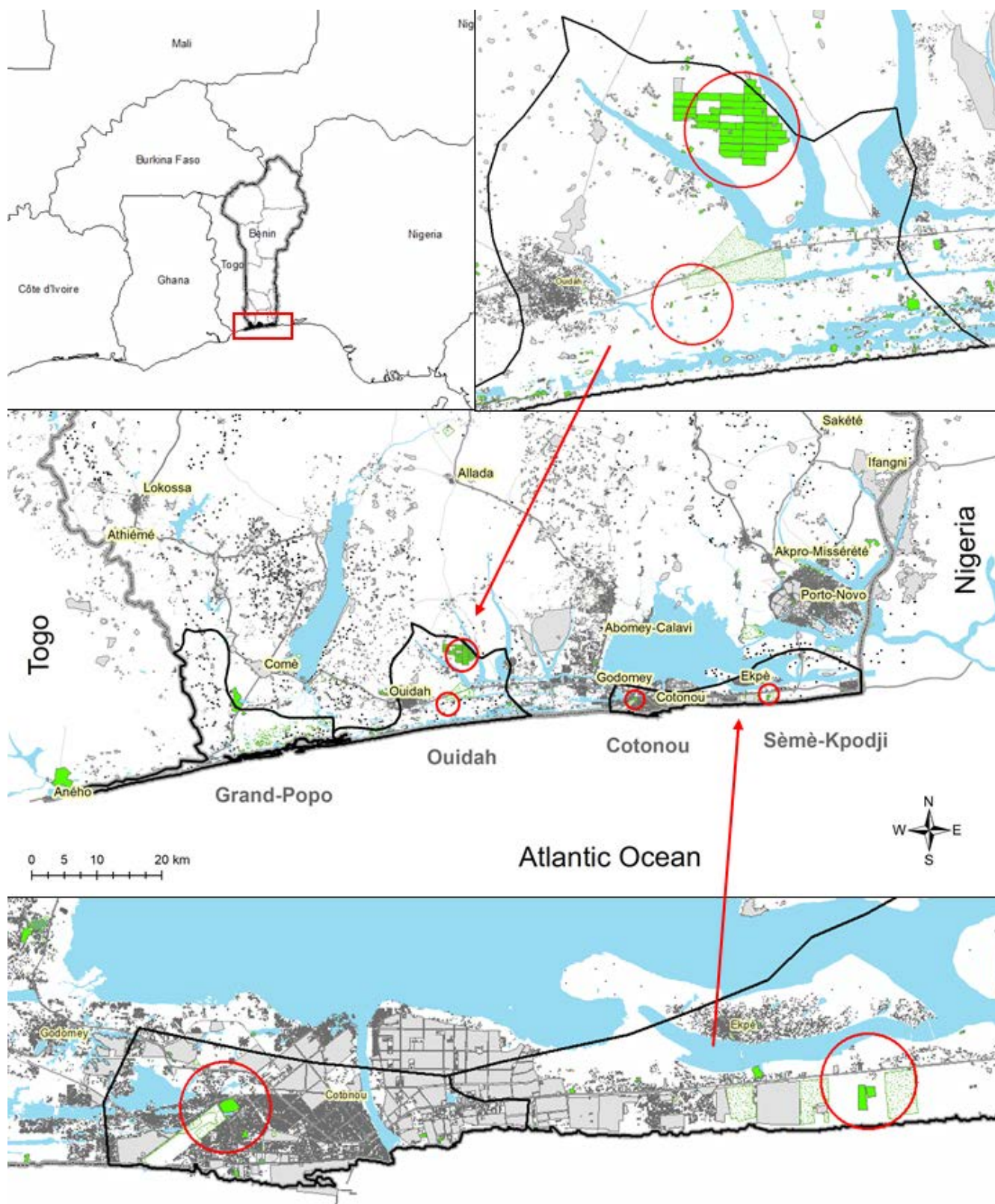


Fig. 1. Geographical location of southern Benin vegetable gardening

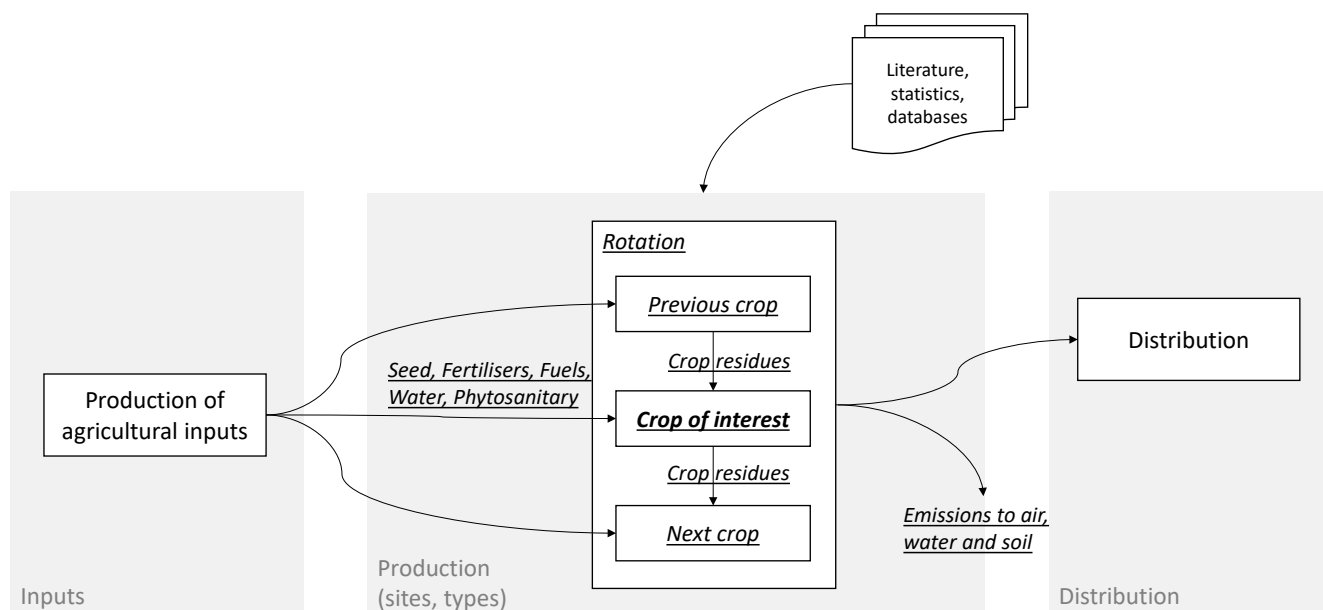


Fig. 2. System boundaries of the southern Benin market vegetable gardening LCA (included elements are underlined)

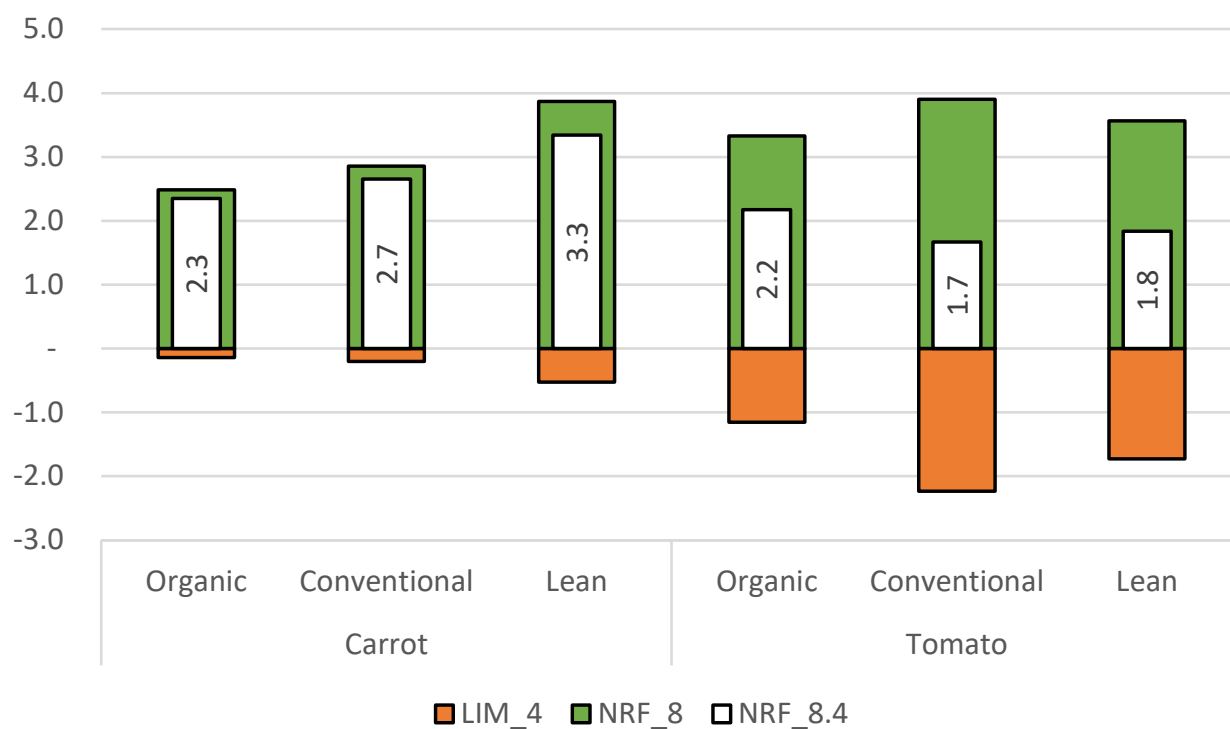
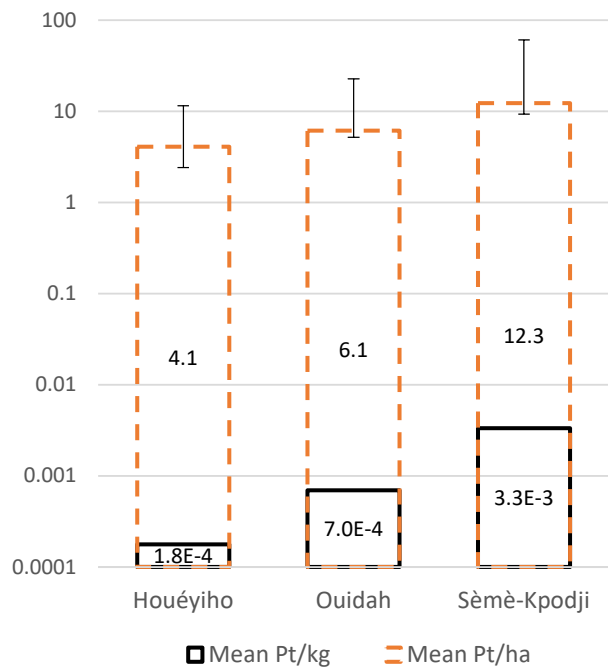
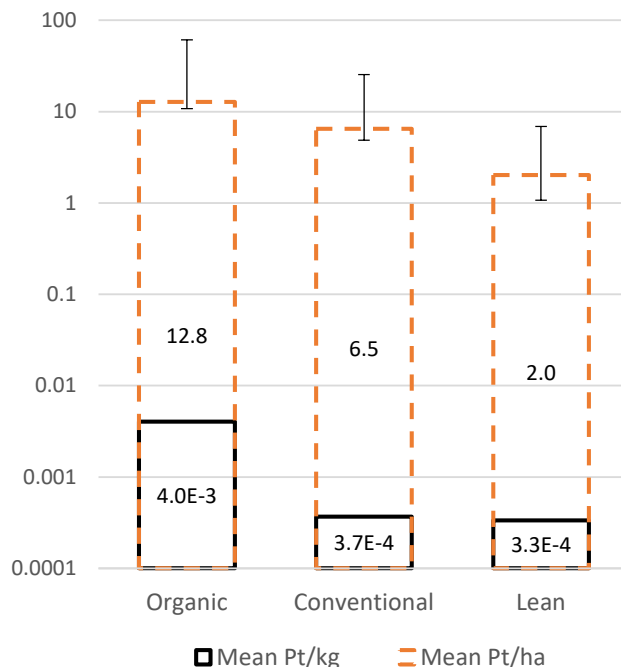


Fig. 3. Nutritional indices (Nutrient Rich Food and LIMited nutrients score) for southern Benin carrot and tomato

a) All crops, per site



b) All crops, per type



c) All crops, per site and type

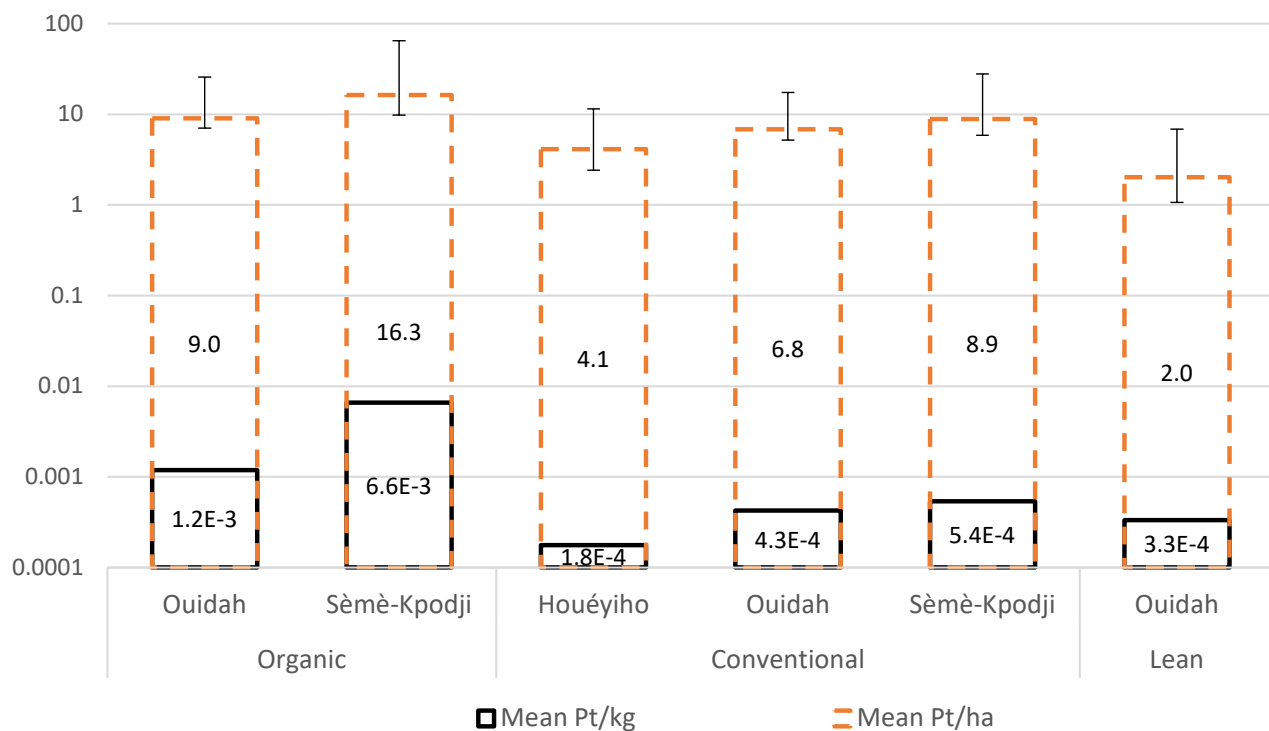


Fig. 4. Mean impacts (single ILCD score, in Pt) of the sites and production types of four market vegetable gardening products in southern Benin, per kg of product and per ha of crop (error bars represent the variation among production unit values contributing to the mean)

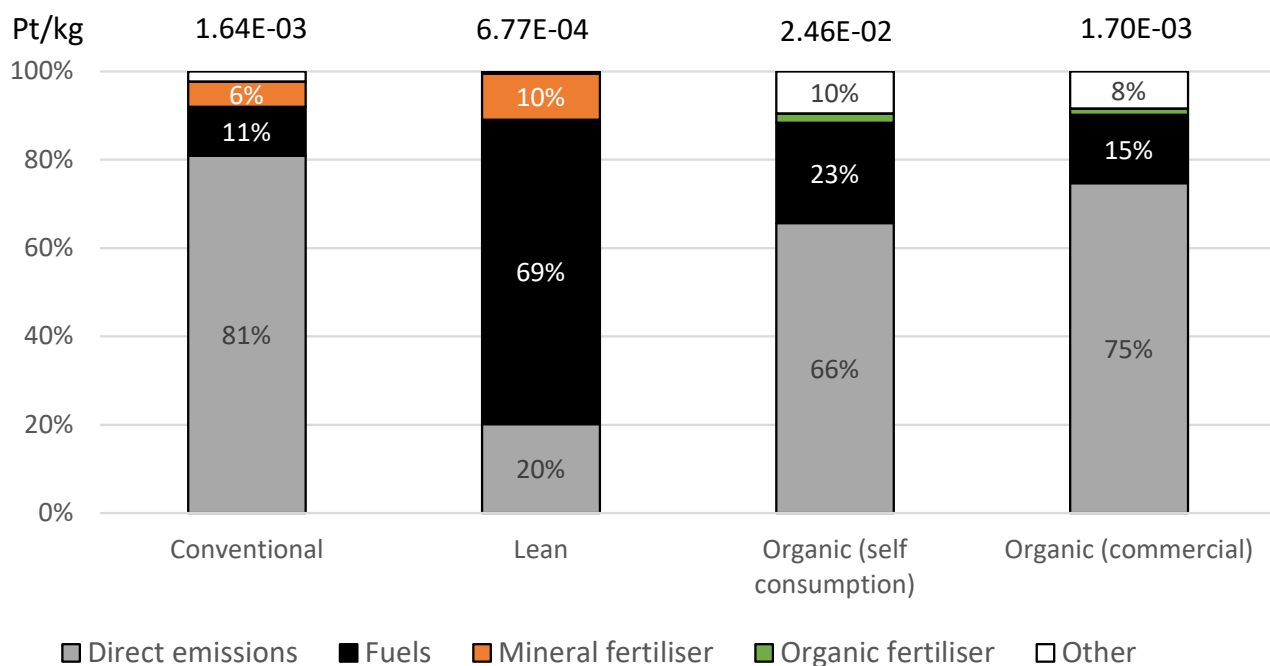


Fig. 5. Contribution analysis of tomato, based on the single ILCD score per kg of product, all sites combined

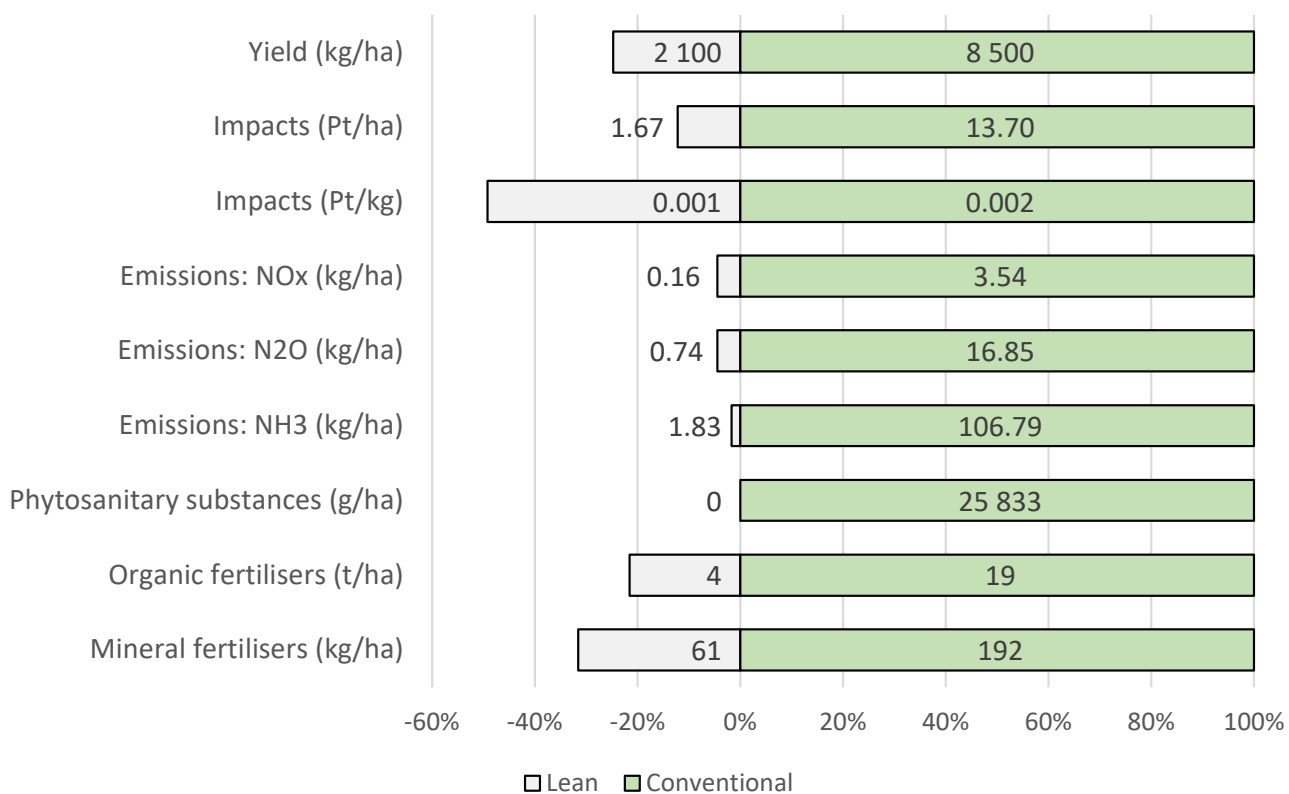


Fig. 6. Comparisons of the inputs and impacts of Lean vs. Conventional tomato, all sites combined (values in the left side of the X axis represent positive percentages of values in the right side)

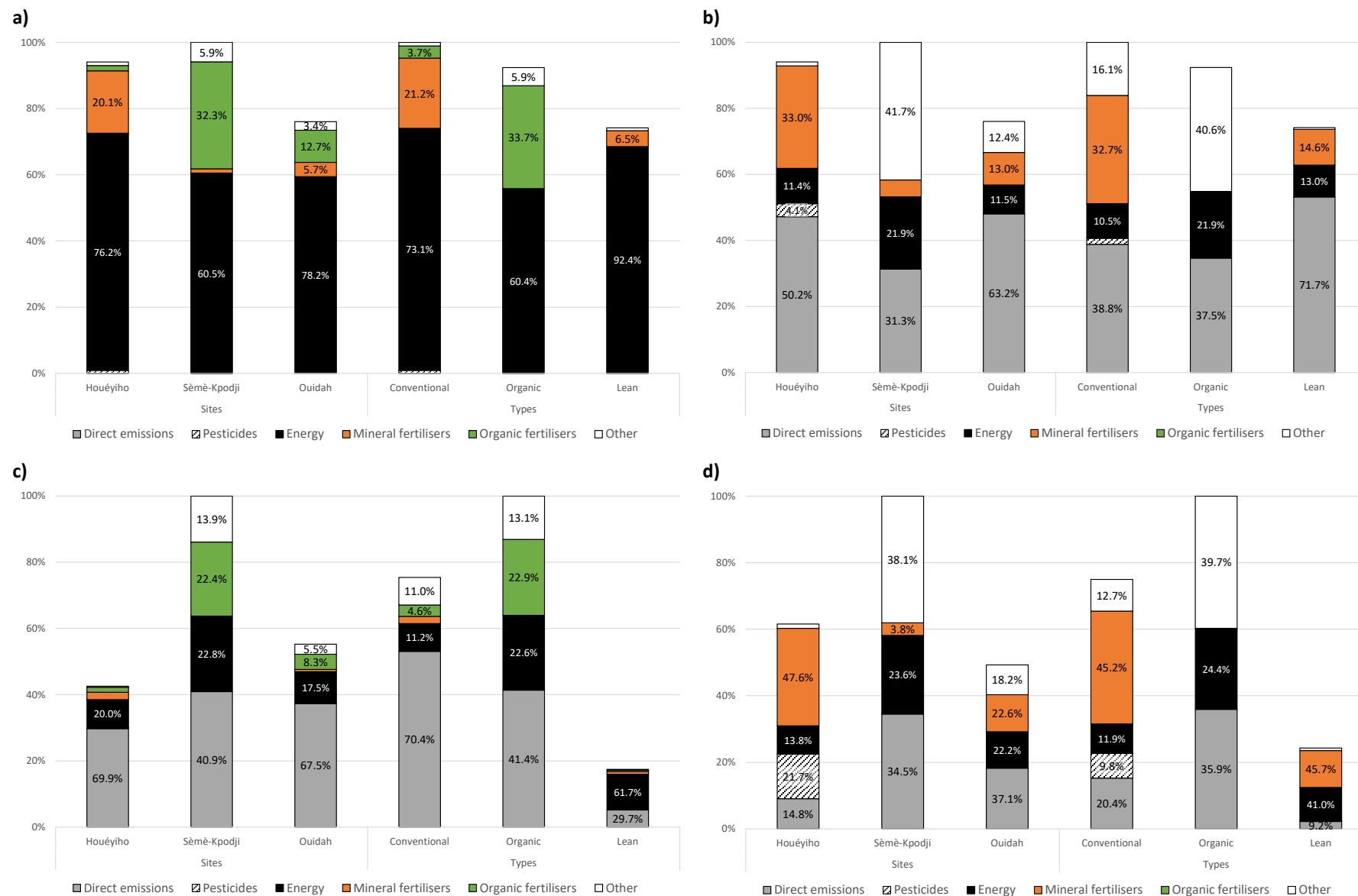


Fig. 7. Contribution analysis of all crops, per ha of cultivation, per sites and types, for a) climate change, b) freshwater eutrophication, c) acidification and d) freshwater ecotoxicity

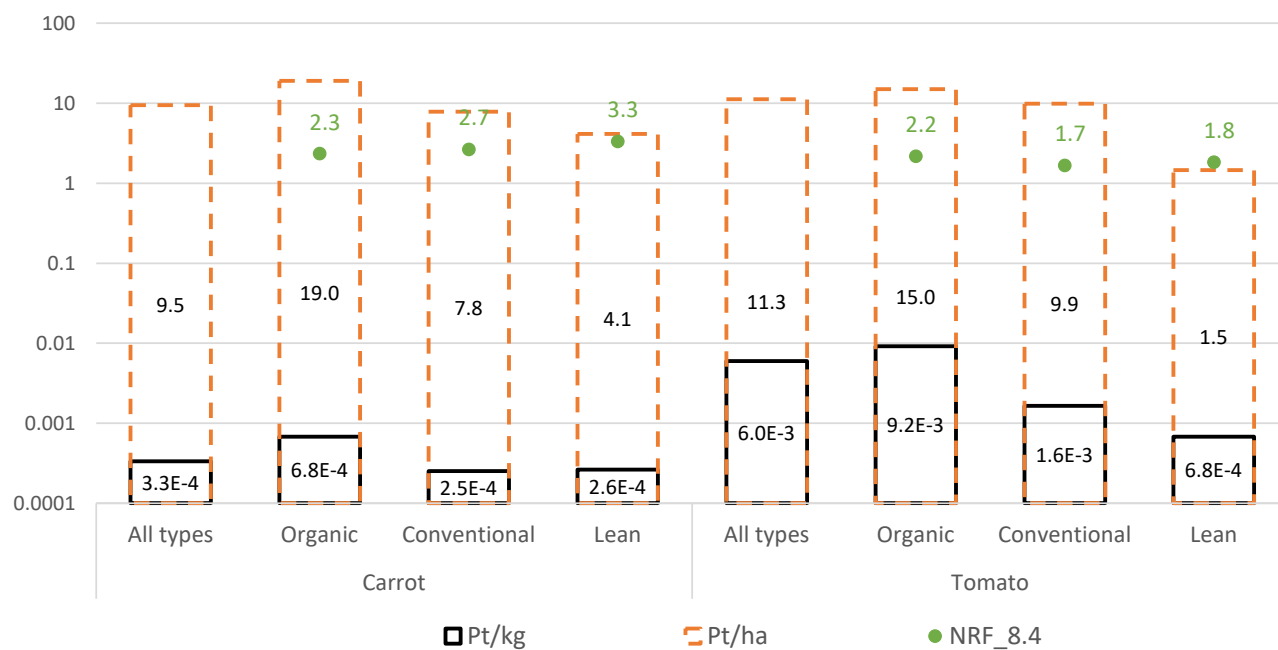
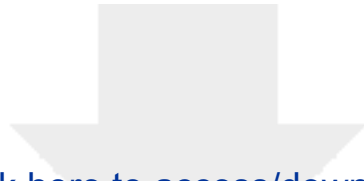


Fig. 8. Mean impacts (single ILCD score, in Pt) across sites of southern Benin carrot and tomato, per kg of product and per ha of crop, contrasted with their associated nutritional indices (NRF_{8.4} = Nutrient Rich Food - Limited nutrients score)



[Click here to access/download](#)

Supplementary Material

LCA of Benin vegetable gardening - SM.pdf

