

The Agroecological Transition in Malaysia

Introducing TRAILS project in
Kinabatangan district, Sabah

Marcel Djama, CIRAD, Malaysia
Alain RIVAL, CIRAD, Indonesia



TRAILS

“climaTe Resilient lAndscapes for wlldLife conServation”

Funders

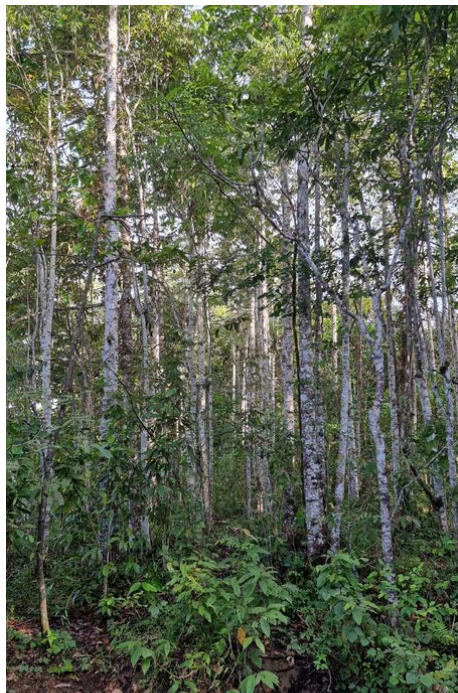


Alliance pour
la Préservation
des Forêts

Implementers



Beneficiaries



**TRAILS AIMS AT
ASSESSING THE
POTENTIAL OF OIL
PALM BASED
AGROFORESTRY
TO ADDRESS
BIODIVERSITY
CONSERVATION,
CLIMATE RESILIENCY
AND PRODUCTIVITY.**



Questioning the future of large monocultural plantations

- Biodiversity loss,
- Land and water degradation,
- GHG emissions,
- exposure to risks
 - economic,
 - climatic
 - pathologic ...



Agroforestry is a component of agroecology

- Planting trees among agricultural crops brings about significant changes in plant cover, soil structure, surface water and groundwater regimes, carbon uptake and storage and the return of organic matter through litter accumulation.
- Trees interplanting shows a positive impact on biodiversity and on the development of beneficial insects and pollinators, and therefore on crop productivity.
- It contributes to landscape climate resilience and microclimate regulation.
- It supports farm income diversification



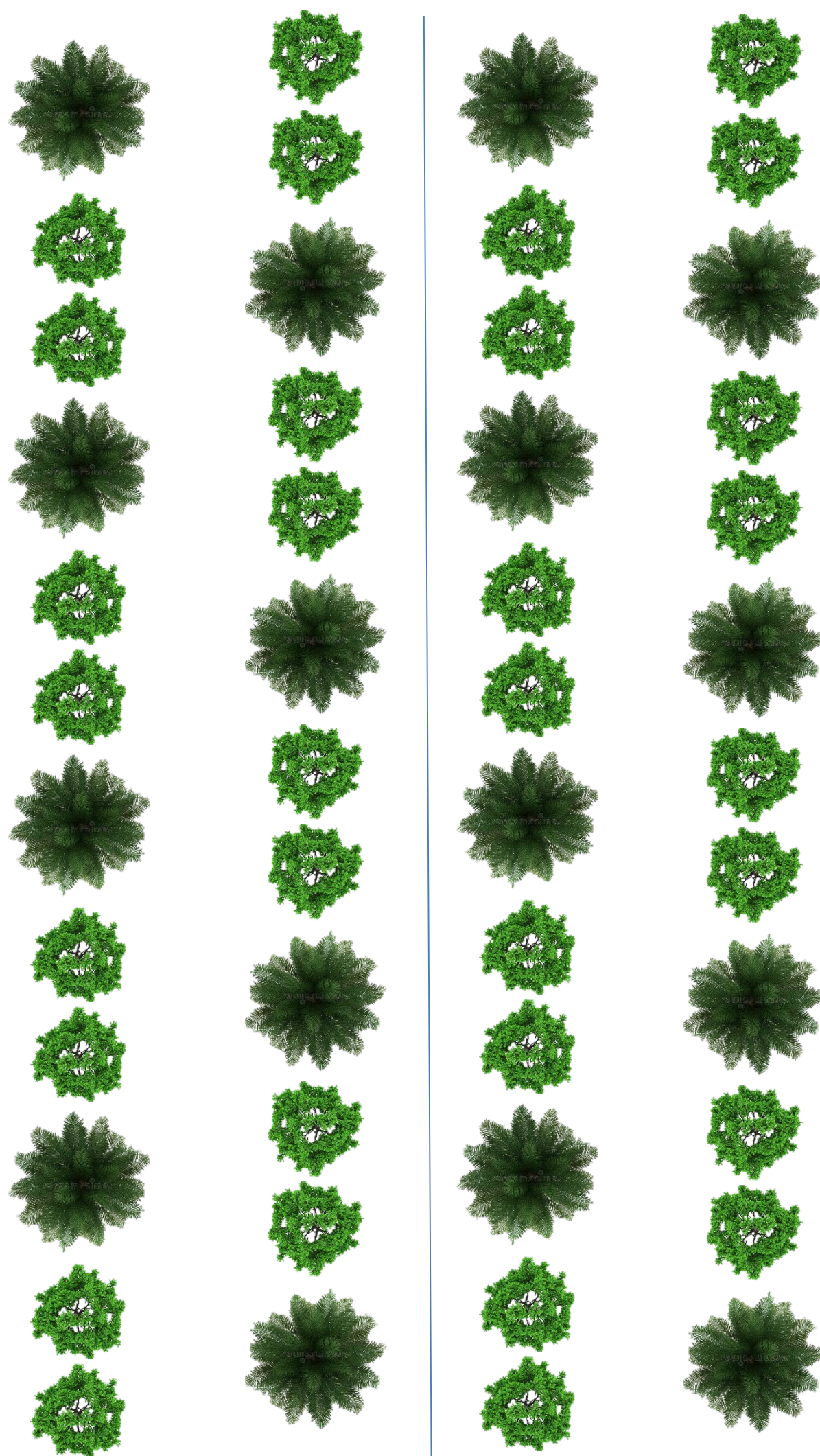
TRAILS CARRIES OUT FIELD RESEARCH IN AGROFORESTRY IN A REAL OIL PALM PLANTATION CONTEXT

- Plantation based in Sabah (Lower Kinanbatangan)
- MOPP Plantation manages 8,000ha of oil palm plantation and mills
- TRAILS is installing AFS mixing native forest trees with oil palm





A HOLISTIC PROJECT:
DEVELOPED WITH LOCAL COMMUNITIES
INVOLVED IN REFORESTATION AND
WILDLIFE MONITORING



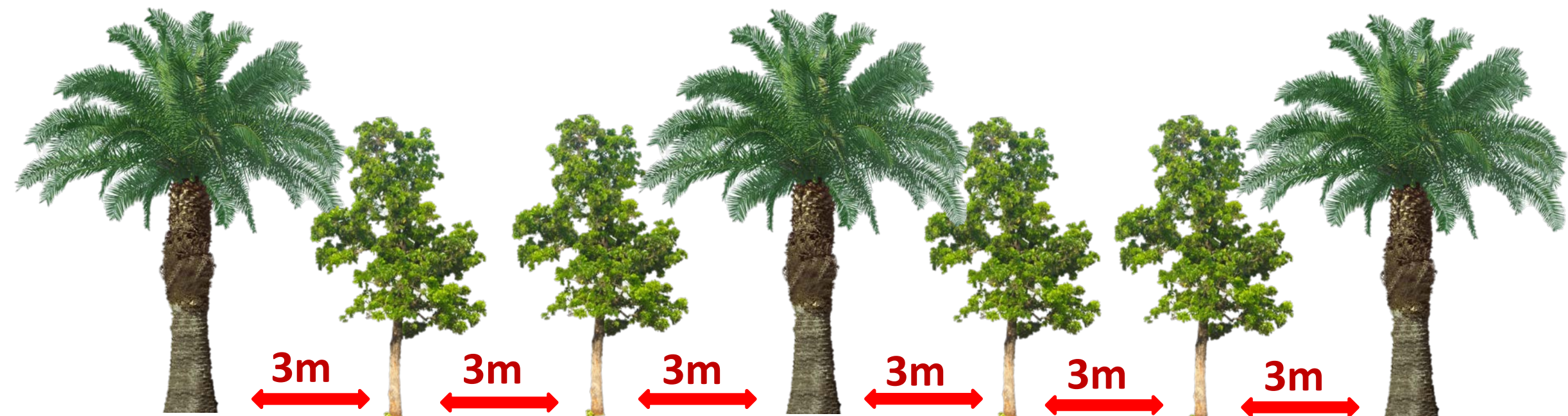
MIXED PLANTATION (TREES & PALMS)

TREATMENT 4

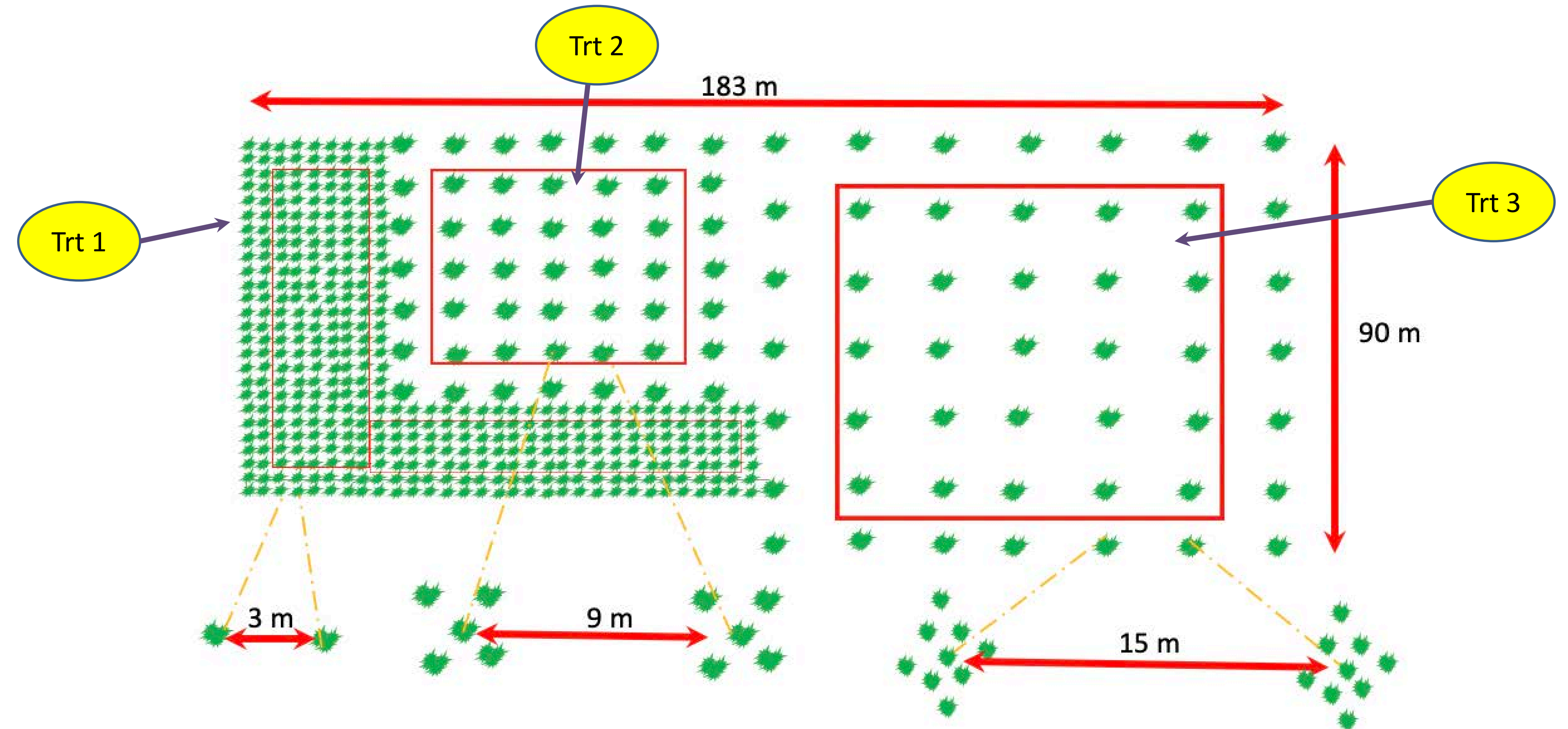
2 Forest Trees Planted

Between 2 Palms On The Line (128 Trees)

Trees & Palms Spacing Is 3m



ASSESSMENT OF FOREST NATIVE SPECIES





Data collection, monitoring and field survey





PROVIDING TRAINING



AND CAPACITY BUILDING



TO ALL STAKEHOLDERS

A TRANSFORMATIVE AGRICULTURAL MODEL NEEDS A TRANSFORMATIVE RESEARCH MODEL

- INTEGRATING...
 - LOCAL KNOWLEDGE
 - (COMMUNITIES INVOLVED IN NATIVE TREES SELECTION AND NURSERIES MANAGEMENT)
 - PLANTATION MANAGERS KNOWLEDGE
 - SUSTAIBAVILITY MANAGERS
 - LOCAL AND INTERNATIONAL AND ACADEMICS

...TO INNOVATE

