

# Capacity-Lift Service Model

## *Service 3: Self-paced training on the core capacities to manage R&I project for impacts*

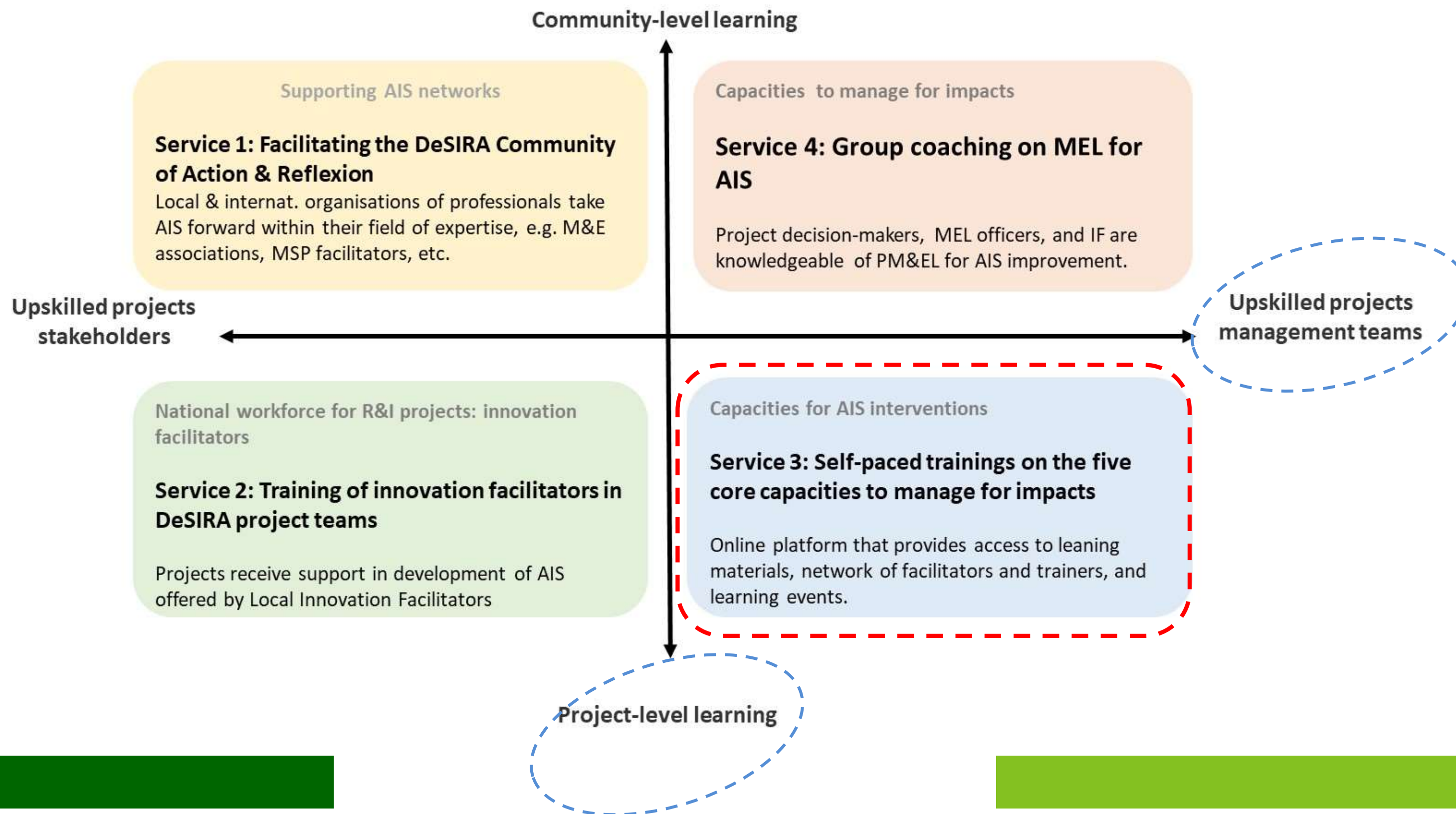
Syndhia Mathé<sup>1</sup>, Aurélie Toillier<sup>1</sup>, Ricardo Ramirez<sup>2</sup>, Chloé Lecomte<sup>1</sup>, Marlene Roefs<sup>3</sup>, Ola Dinska<sup>4</sup>, Joaquin Navas<sup>4</sup>, Sarah Audouin<sup>1</sup>, Fabris Compaoré<sup>1</sup>, Marjolein Veldman<sup>4</sup>, Luz Rincon<sup>5</sup>, Aura Romualdo<sup>5</sup>, Manon Koningstein<sup>4</sup>, Renaud Guillonnet<sup>4</sup>, Lucie Lemagnan<sup>6</sup>, Frédéric Diez<sup>6</sup>, Pris Henriquez<sup>4</sup>, Bianca Bek<sup>4</sup>

1. Agrinatura/CIRAD
2. Agrinatura/University of Guelph
3. Agrinatura/Wageningen University
4. Agrinatura
5. Agrinatura/Innovahub
6. CIRAD





# 1. CLIFS model : Service 3



## 2. Objectives & target audience

---

### Objectives of the service

- Provide (future) **project managers** with access to a self-paced e-learning course to **strengthen their managerial capacity** to better run their R&I project intervention to demonstrate and improve positive impacts on agricultural and agri-food systems
- Provide **project formulators with key tools and approaches** to design effective and impactful R&I projects
- Develop of **an ad-hoc self-paced training based on needs**
- Support the **development of a community of actors** involved in R&I with an AIS perspective

### Specific target audience

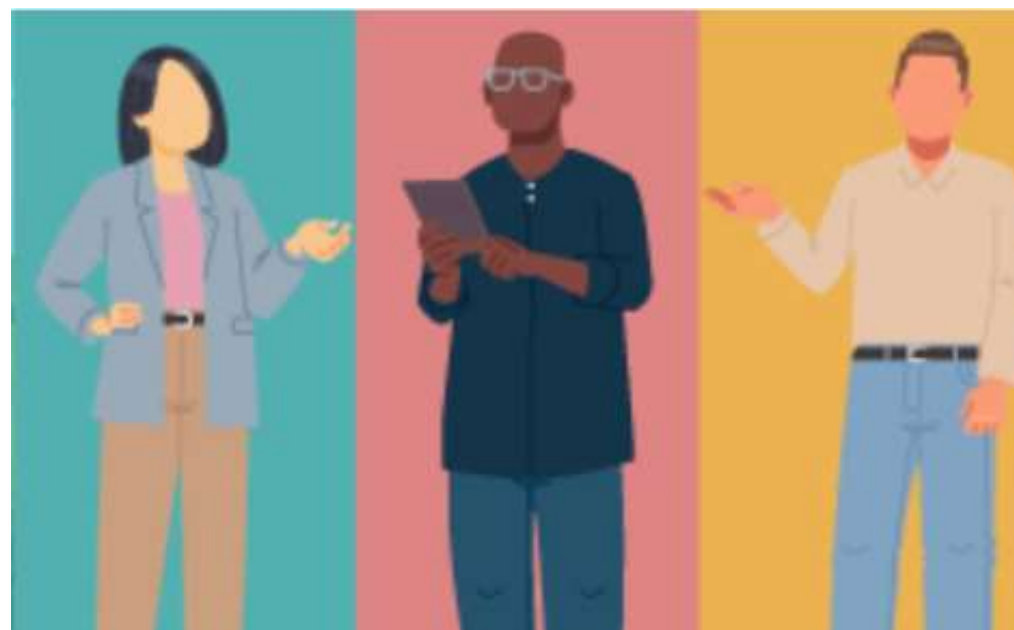
- **R&I project managers and developers/designers** with a basic understanding of research and innovation approaches in the agricultural sector in the developing countries and basic knowledge of the realities and challenges of rural development, agriculture and food and nutrition

# 3. Target audience needs

R&I Project managers/developers need to be able to :

*Contribute to more long-term outcomes at the level of national AIS*

*Face innovation paradoxes with a project-based approach*



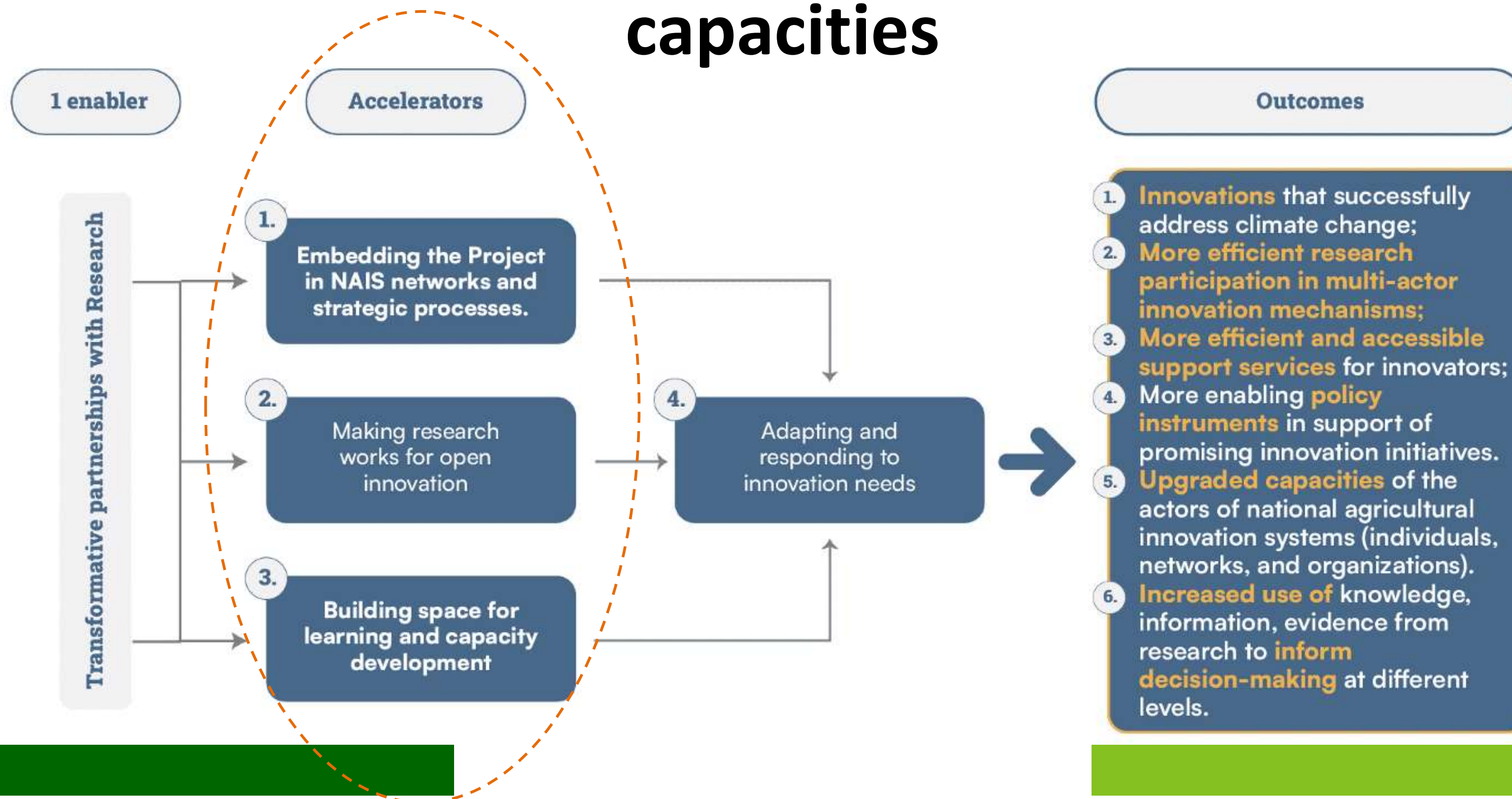
*Efficiently operate multistakeholder mechanisms in support to innovation processes*

*Adapt and respond to emerging innovation support needs*

*Combine project learning and accountability*



# 3. Target audience needs: Core managerial capacities





# 4. Service content & delivery mechanisms



## Welcome to Learning Path 1 : All about Conducting multilevel Action-Research in Agriculture Innovation System

In this first Learning Path, you will get a better understanding about and will be equipped with tools to conduct Action-Research at the innovation niche level, at the level of innovation support services and at the level of institutions and policies. Thanks to these contents, you will know how to embedding the R&I project in National Agricultural Innovation System networks and strategic process.

### E-LP1: All about Conducting multilevel Action-Research (AR) in AIS

**Module 1:** AR at the innovation niche level

**Module 2:** AR at the level of innovation support services

**Module 3:** AR at the level of institutions and policy



## Welcome to Learning Path2 : All about using Open Innovation approaches in multiactor (R&I) partnerships

This learning journey, innovating in Partnership: Making Collaboration Work with **Open Innovation Approaches**, explores the importance of **co-creation**, **collaboration**, and innovation facilitation in Research and Innovation (R&I) projects. Through **multistakeholder platforms**, open innovation strategies foster ownership, cross-learning, and sustainable solutions. Collaboration can occur at key moments, such as field visits, hackathons, or participatory workshops, to test, share, and co-create solutions. The role of innovation facilitation is essential, as it supports partnerships, guides activities, and strengthens the capacity of facilitators to ensure successful multistakeholder innovation outcomes.

### E-LP2: All about using OI approaches in multiactor (R&I) partnerships

**Module 1:** Making collaboration work with OI approaches

**Module 2:** Multistakeholder platforms for OI

**Module 3:** The role of innovation facilitation



## Welcome to Learning Path3 : Using monitoring, evaluation and learning to pilot and adapt innovation processes

In this Learning Path, you will gain a deeper understanding of the key elements of use-oriented MEL systems and the relationships **between MEL processes and system building blocks**. You will become familiar with the **Utilization-Focused Evaluation approach** and understand the importance of Developmental Evaluation for AIS. Additionally, you will learn how to support readiness for conducting meaningful and useful evaluations.

### E-LP3: All about using Monitoring, Evaluation and Learning for adaptive management

**Module 1:** Key components to design R&I project MEL system

**Module 2:** Utilization-focused Evaluation, Readiness, and Theory of Change

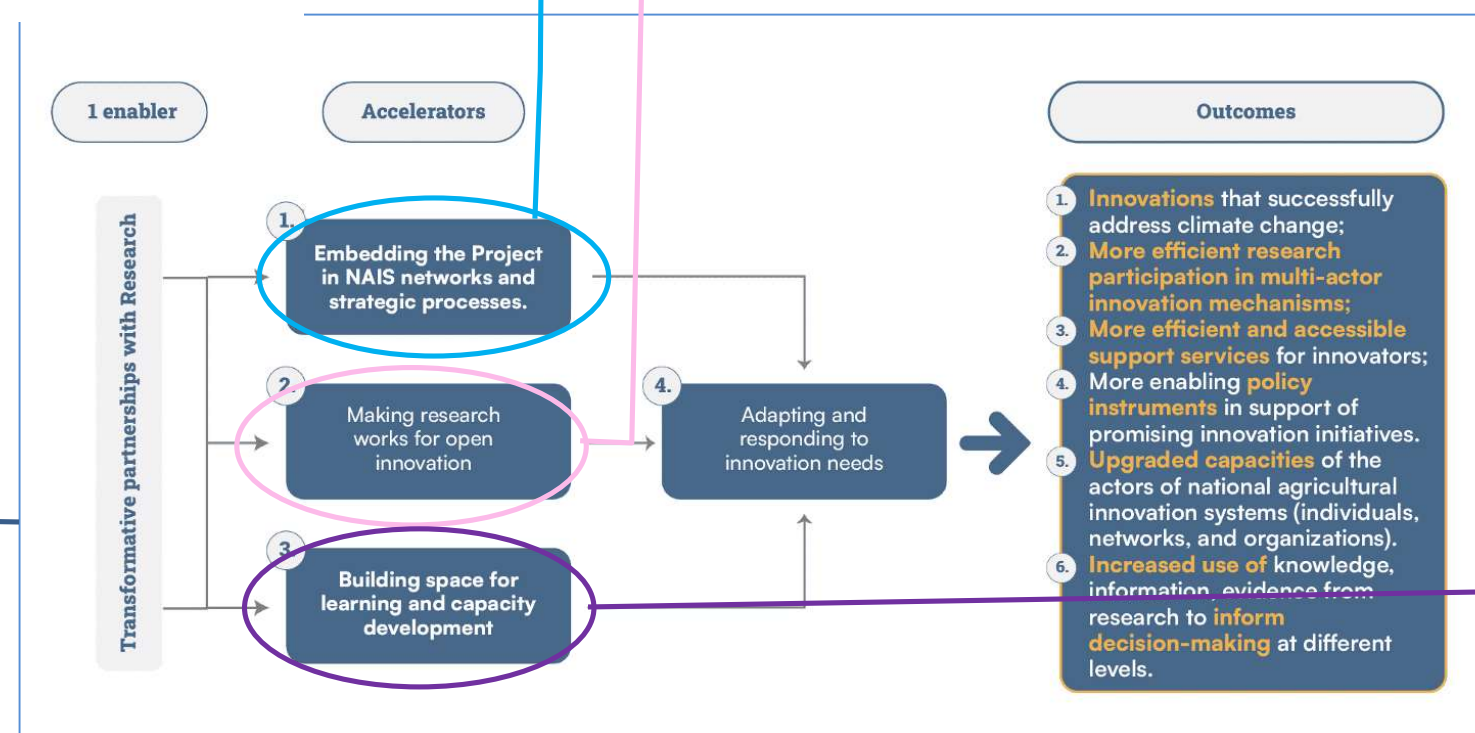
**Module 3:** Practical tools for MEL

## General introduction



**General introduction : "Mastering core capacities to manage R&I projects for sustainable impact in developing countries"**

Scope of the course  
Programme overview  
Rationale of the e-learning  
Acknowledgments



# 3. Service content & delivery mechanisms

- Access and registration via the **Cirad e-learning platform** (Moodle) : <https://elearning.cirad.fr/>
- Service available by **May 2025** (official launching)
- Characteristics of each e-learning path
  - ✓ Introduction + 3 modules
  - ✓ Deeper dive, assignments, references
  - ✓ Duration of each module : 45 minutes
  - ✓ Quiz after each module (score 6 correct answers out of 8 to pass)
- Learners can ask questions on the platform
- Certificate after completion of the quiz of each module



## 4. Expected Capacity Outcomes

---

- **At project level**

Improved management capacity of project teams

- **At the research organisation level**

Institutional change towards R&I approach based on AIS perspective

- **DeSIRA community level**

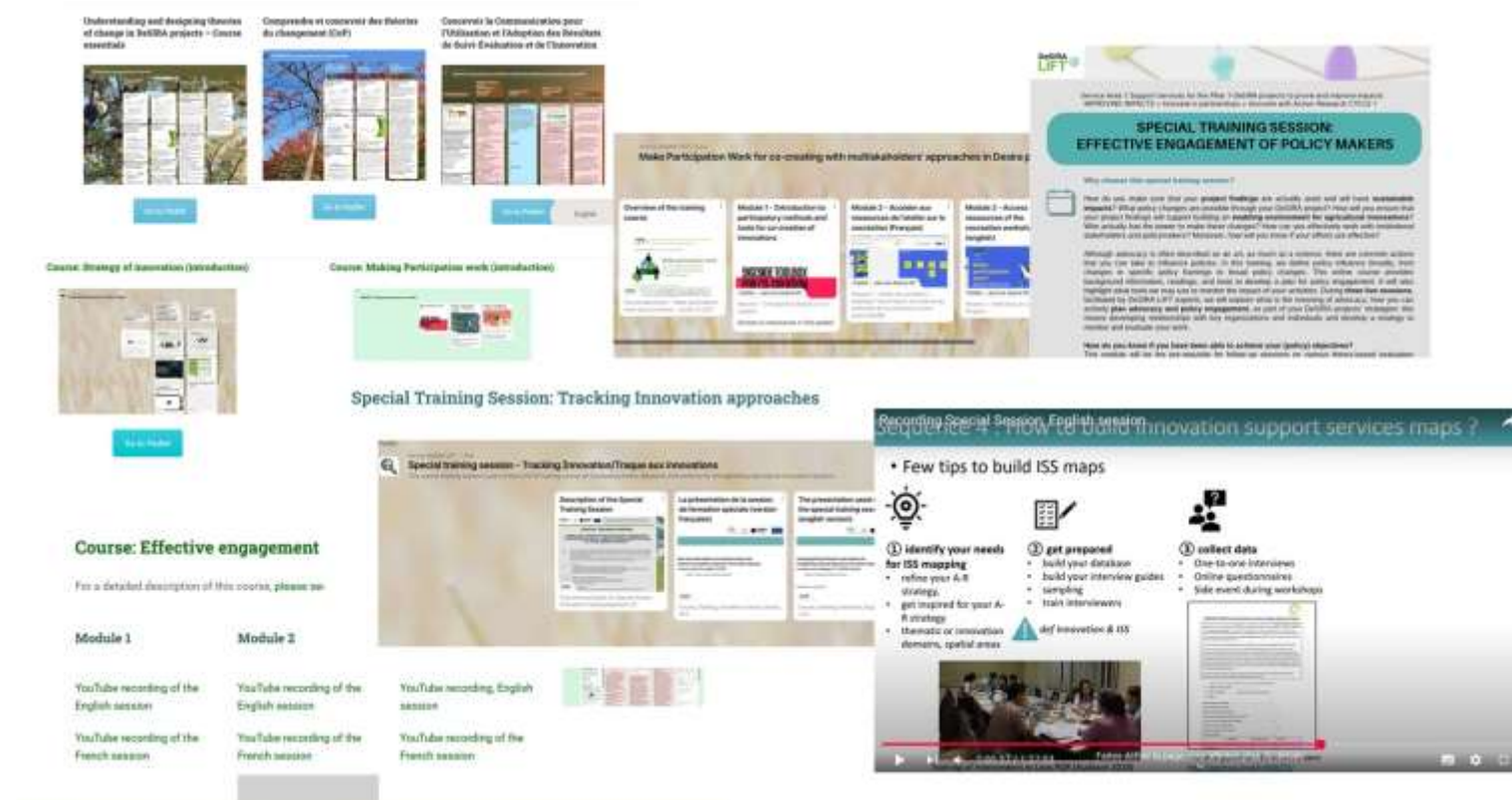
Availability of practice-tested training courses to the wider community of actors involved in agricultural innovation, including future project teams



# 5. Lessons learnt & key success factors

## Why is this service perfectly adapted to project managers and formulators?

- It contributes to strengthening **managerial core capacities** to overcome common challenges of R&I project that hinder their ability to both demonstrate and improve their impact
- It is **flexible and affordable** (time vs project cycle, responsiveness, free, ...)
- It is **interactive e-learning courses** with diversity of resources developed on-demand
- It is based on **co-production of knowledge** between **experts** and DeSIRA R&I project managers



<https://www.desiraliftcommunity.org/management-areas/>

